

# Hemocult II<sup>®</sup> BRAND

SERIAL TEST FOR ROUTINE SCREENING FOR FECAL OCCULT BLOOD

## PATIENT INSTRUCTIONS - Hemocult II<sup>®</sup> BRAND Slide (Test Card)

**CAUTION:** For accurate test results, read Patient Instructions completely before performing this test.

### Drug Guidelines<sup>1</sup>

- For **seven** days before and during the stool collection period **avoid** non-steroidal anti-inflammatory drugs such as ibuprofen, naproxen or aspirin (more than one adult aspirin a day).
- Acetaminophen (Tylenol<sup>®</sup>) can be taken as needed.
- For **three** days before and during the stool collection period **avoid** vitamin C in excess of 250 mg a day from supplements, and citrus fruits and juices.<sup>2,3</sup>

### Diet Guidelines

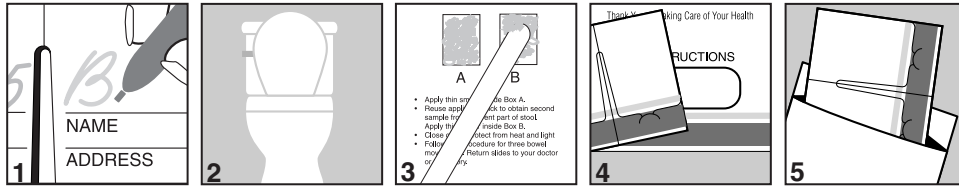
- For **three** days before and during stool collection period **avoid** red meats (beef, lamb and liver).
- Eat a well balanced diet including fiber such as bran cereals, fruits and vegetables.

### Notes:

- <sup>1</sup> Please talk to your doctor or pharmacist if you have any questions about medications you take regularly.
- <sup>2</sup> 100% of RDA of vitamin C for an adult is 60 mg a day.
- <sup>3</sup> Some iron supplements contain vitamin C in excess of 250 mg.

\*Tylenol is a registered trademark of McNeil Consumer Products.

- For accurate test results, apply samples from bowel movements collected on **three different days** to slide.
- Do not collect samples if blood is visible in your stool or urine (e.g., menstruation, active hemorrhoids, urinary tract infection). **Contact your doctor.**
- For the most accurate test results collect each stool sample before contact with the toilet bowl water. You may use any clean, dry container.
- Return completed slide to your doctor or laboratory no later than 14 days after your first sample collection.
- Protect slide from heat, light, and volatile chemicals (iodine, ammonia, bleach, and household cleaners).
- Remove toilet bowl cleaners from toilet tank and flush twice before proceeding.



1. Remove slide from paper dispensing envelope. Using a ball-point pen, write your name, age, and address on the front of the slide. **Do not tear the sections apart.**
2. Fill in sample collection date on section 1 before a bowel movement. Flush toilet and allow to refill. You may use any clean, dry container to collect your sample. Collect sample before it contacts the toilet bowl water. Let stool fall into collection container.
3. Open front of section 1. Use one stick to collect a small sample. Apply a thin smear covering Box A. Collect second sample from different part of stool with same stick. Apply a thin smear covering Box B. Discard stick in a waste container. **DO NOT FLUSH STICK.**
4. Close and secure front flap of section 1 by inserting it under tab. Store slide in any paper envelope until the next day. **Important: This allows the sample to "air dry."**
5. Repeat steps 2-4 for the next two days, using sections 2 and 3. After completing the last section, store the slide overnight in any paper envelope to air dry.

The next day, remove slide from the paper envelope and place in the Mailing Pouch, if provided. Seal pouch carefully and **immediately return to your doctor or laboratory.**

**Note:** Current U.S. Postal Regulations prohibit mailing completed slides in any standard paper envelope.

**DO NOT RETURN OR MAIL SLIDES TO BECKMAN COULTER, INC.**

**Beckman Coulter, Inc.**  
Fullerton, CA 92834-3100

To reorder this sheet, call 1 (866) 544-1234  
For technical assistance call 1 (800) 877-6242  
or e-mail [askpcd@beckman.com](mailto:askpcd@beckman.com)