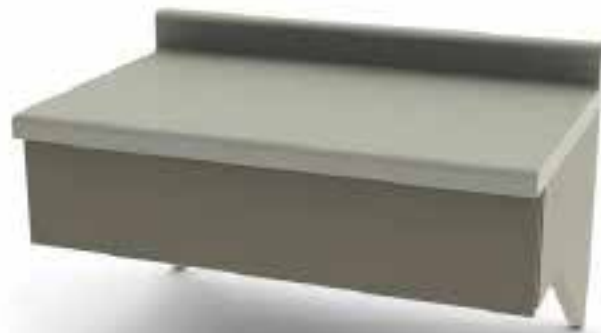


## 30" Modular Writing Desk Unit with Drawer

### Model 6052

UMF Medical's 6052 Modular Writing Desk has one drawer and includes a high pressure laminate countertop with backsplash. It's the perfect complement to any exam room's consultative space.



**ALL UMF MEDICAL PRODUCTS ARE MADE IN THE USA**

### Key features at a glance

- › 20 gauge steel construction
- › Full extension roller bearing drawer glides
- › Seamless laminate countertop with backsplash
- › Interchangeable drawer fronts
- › 3-year limited warranty

### Specifications

Width: 30" (76.2cm)  
Height: 8.125" (20.6cm)  
(12" High (30.5cm) including backsplash)  
Depth: 19" (48.3cm) to front of countertop

### Accessories

505 – Single drawer lock (*factory installed*)  
507 – Additional Keys (x2)  
Antimicrobial Silver San Base Paint