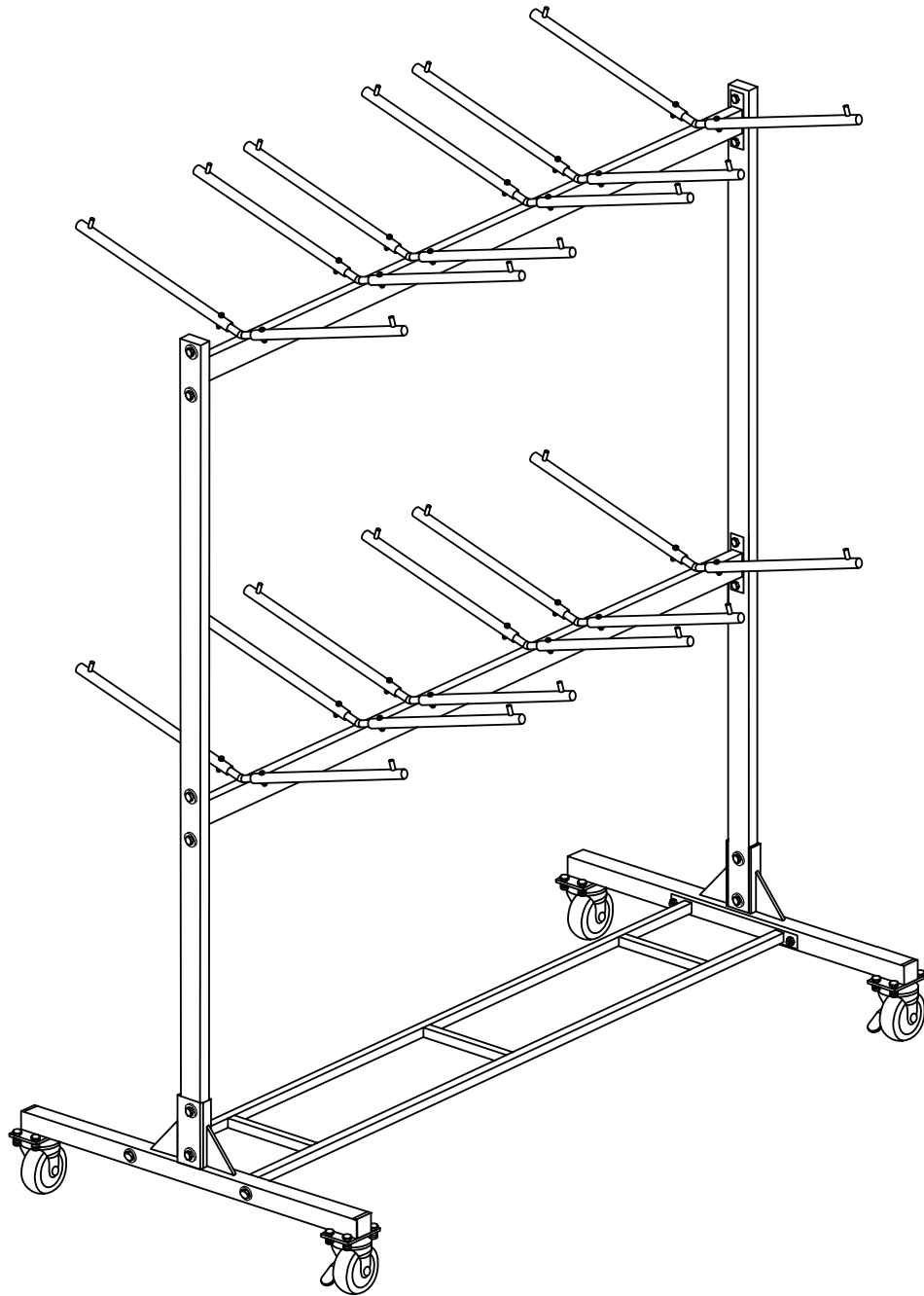


.....

TWO-TIER FOLDING CHAIR CART

.....



USER GUIDE

ADI690-03



Thank you for your purchase.

AdirOffice maintains a strong practice of ongoing development of products and commercial research.

We understand starting and maintaining a business is expensive enough. We can help make it cost effective and beautiful. Plus, our expert team makes sure everything you need works as efficiently as possible.

Table of Contents

- 2** Important Safety Information
- 3** Specifications
- 4** Parts
- 5** Hardware
- 6** Assembly Instructions
- 11** Using The Cart
- 11** Cleaning And Maintenance
- 12** Notes
- 13** Warranty

Important Safety Information

- 1.** This cart is not weatherproof and was designed for indoor use only.
- 2.** Never stand or ride on the cart as it can tip or collapse, causing severe injuries.
- 3.** Only use the cart for its intended purpose, storing and transporting chairs and tables.
- 4.** Always lock the caster wheels in place when storing a full cart.
- 5.** Never store more than the recommended number of chairs and tables on the cart.
- 6.** We highly recommend that two or more people load and unload the cart.

Specifications

Color: Black

Finish: Powder Coated

Length: 65 inches (165.1 cm)

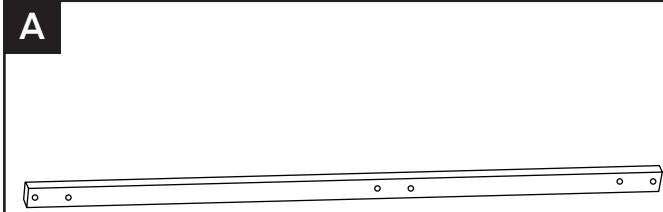
Width: 33 inches (83.8 cm)

Height: 68.5 inches (173.99 cm)

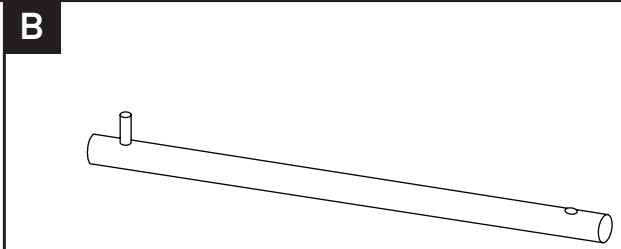
Folding Chair Capacity: Up to 84

Total Weight Capacity: Up to 600 lbs

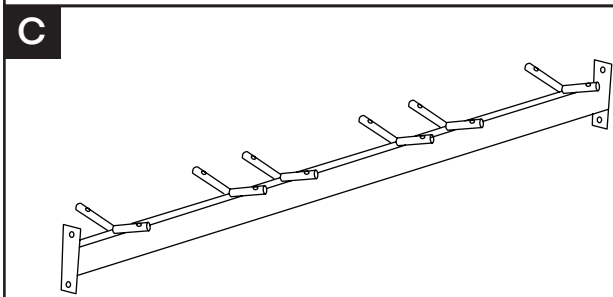
Parts



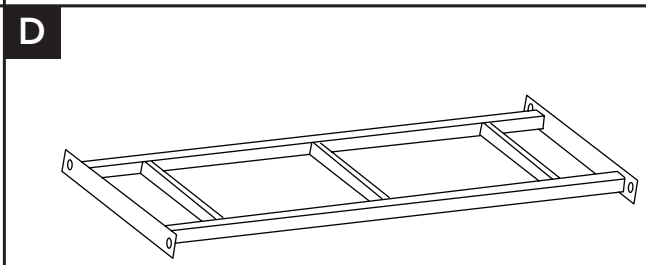
Upright (x2)



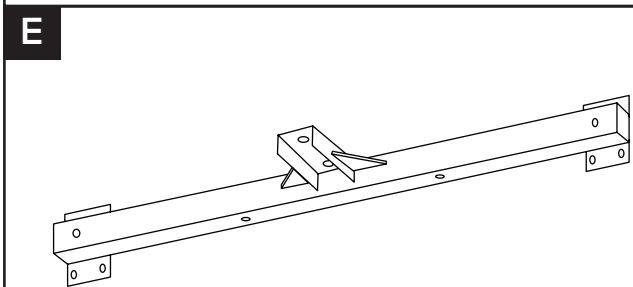
Chair Hanger (x24)



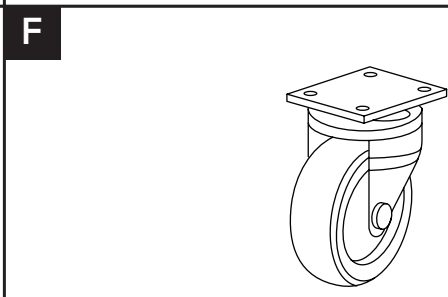
Upper Rail (x2)



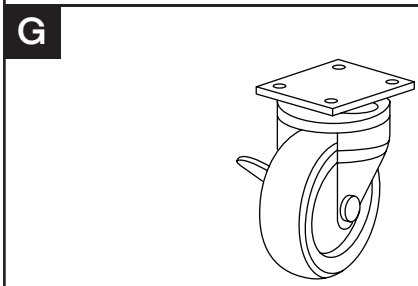
Lower Rail



Base Rail (x2)



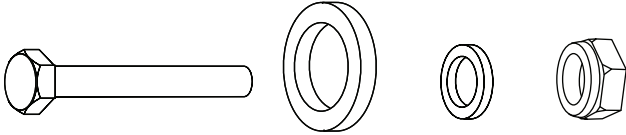
Caster Wheel (x2)



Locking Caster Wheel (x2)

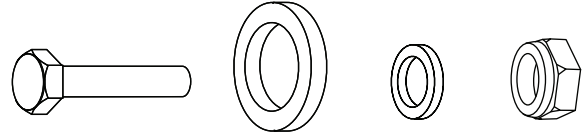
Hardware

1



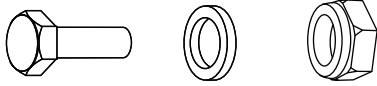
M10 x 60 Long Bolt, Washer, Small Washer & Lock Nut (x4)

2



M10 x 50 Medium Bolt, Washer, Small Washer & Lock Nut (x12)

3



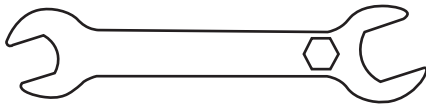
M8 x 15 Small Bolt, Washer & Lock Nut (x16)

4



M6 x 25 Small Bolt, Washer & Lock Nut (x24)

5

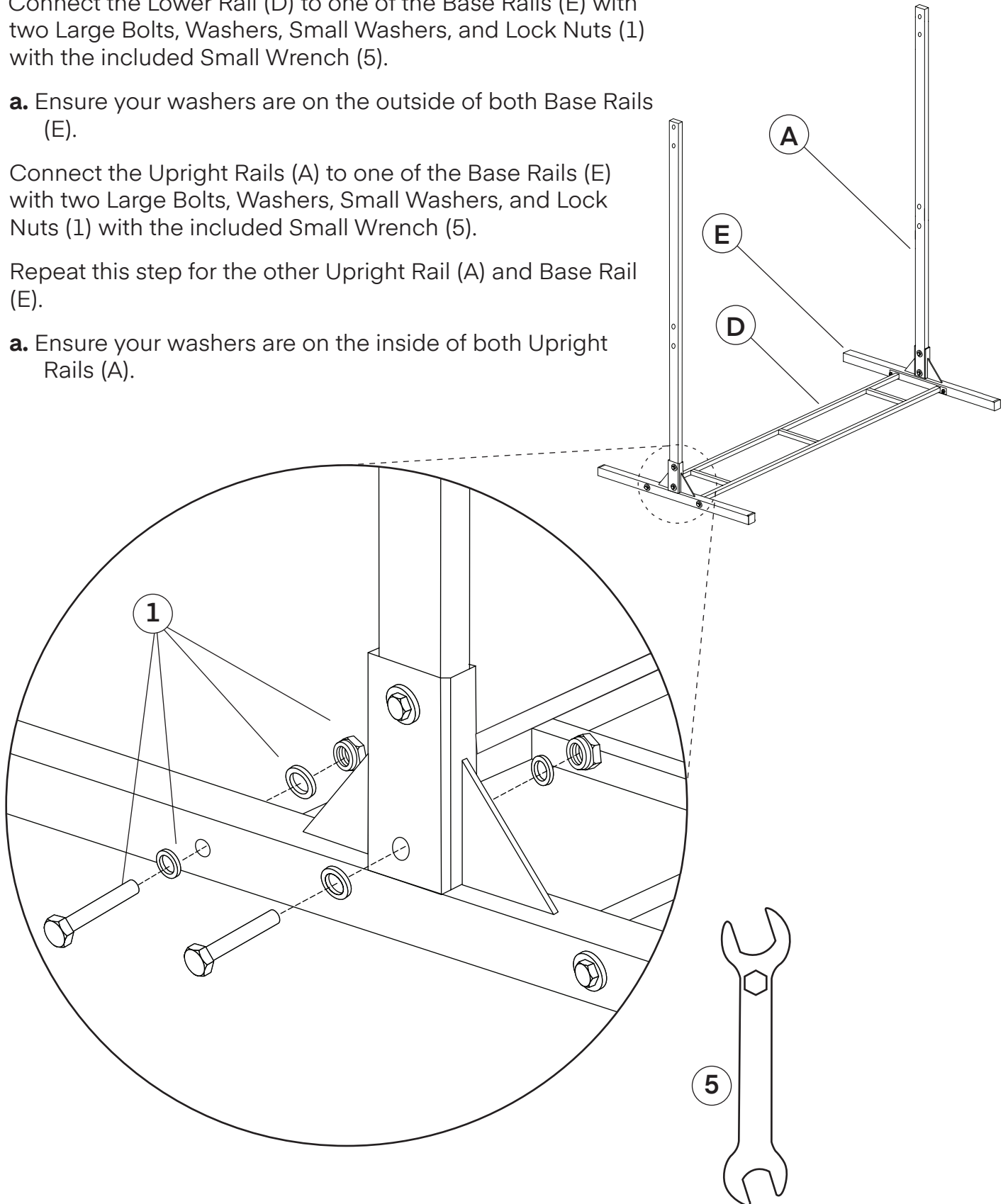


Small Wrench (x2)

Assembly Instructions

Step 1:

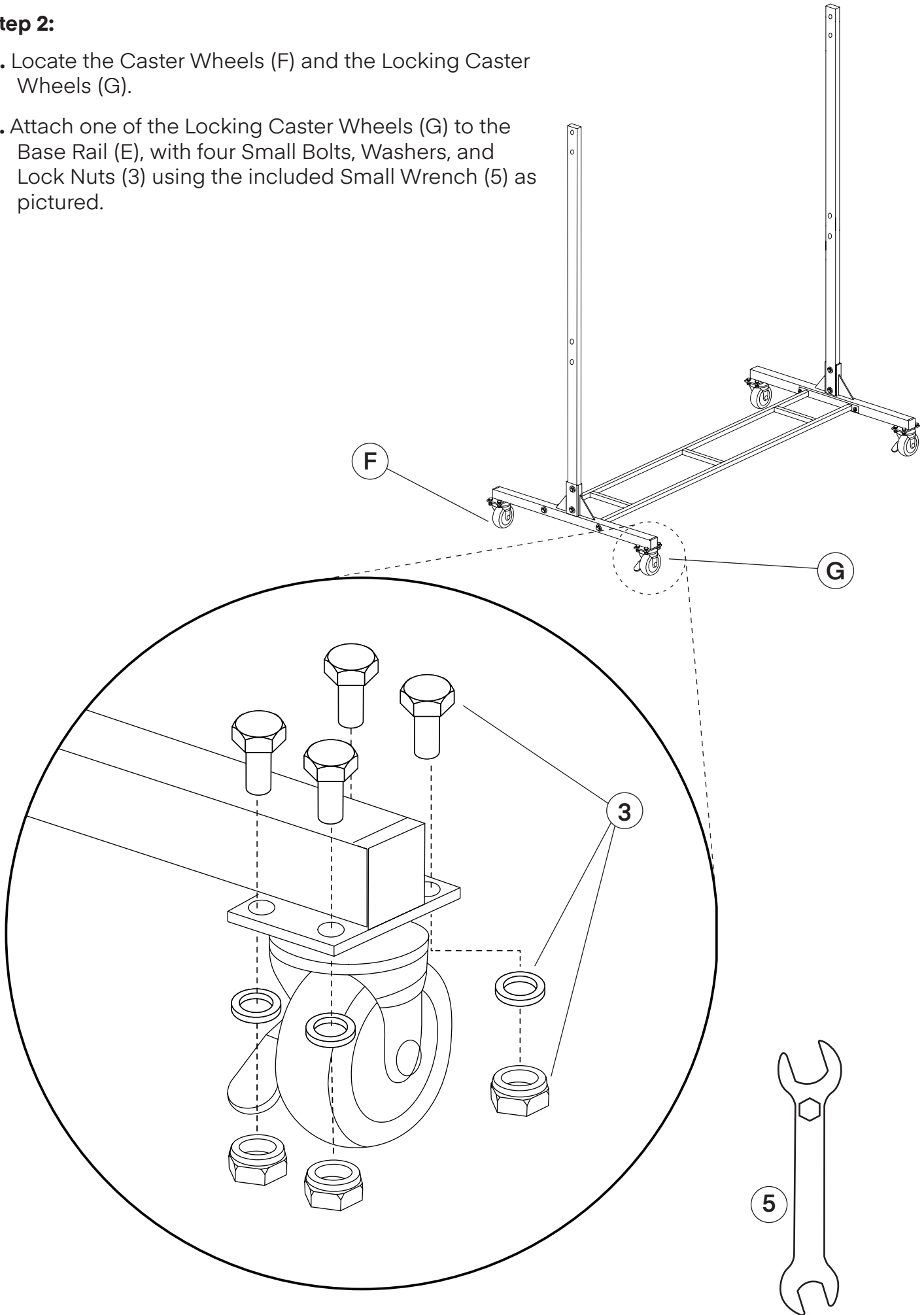
- A.** Locate the Lower Rail (D), both Base Rails (E) and both Upright Rails (A).
- B.** Connect the Lower Rail (D) to one of the Base Rails (E) with two Large Bolts, Washers, Small Washers, and Lock Nuts (1) with the included Small Wrench (5).
 - a.** Ensure your washers are on the outside of both Base Rails (E).
- C.** Connect the Upright Rails (A) to one of the Base Rails (E) with two Large Bolts, Washers, Small Washers, and Lock Nuts (1) with the included Small Wrench (5).
- D.** Repeat this step for the other Upright Rail (A) and Base Rail (E).
 - a.** Ensure your washers are on the inside of both Upright Rails (A).



Step 2:

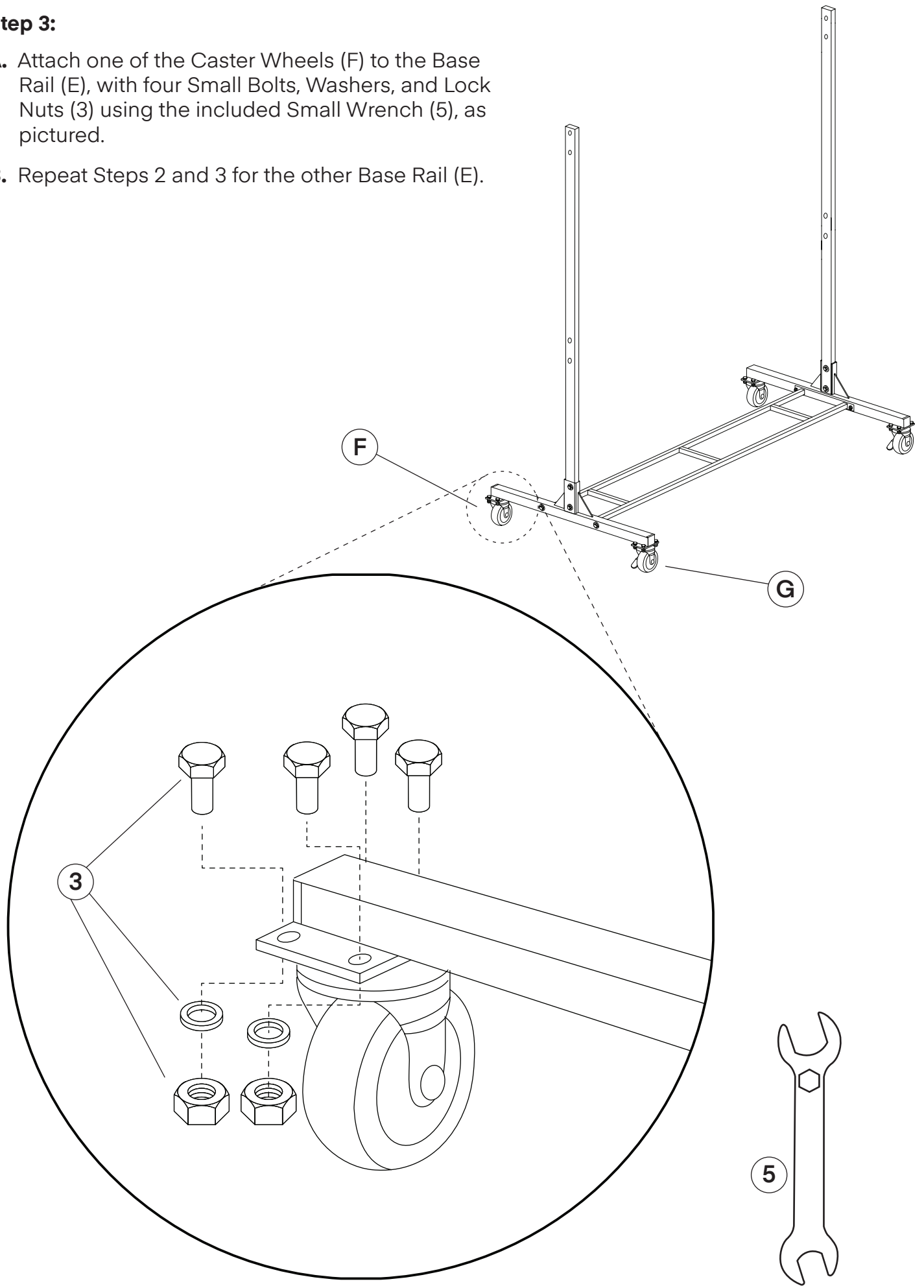
A. Locate the Caster Wheels (F) and the Locking Caster Wheels (G).

B. Attach one of the Locking Caster Wheels (G) to the Base Rail (E), with four Small Bolts, Washers, and Lock Nuts (3) using the included Small Wrench (5) as pictured.



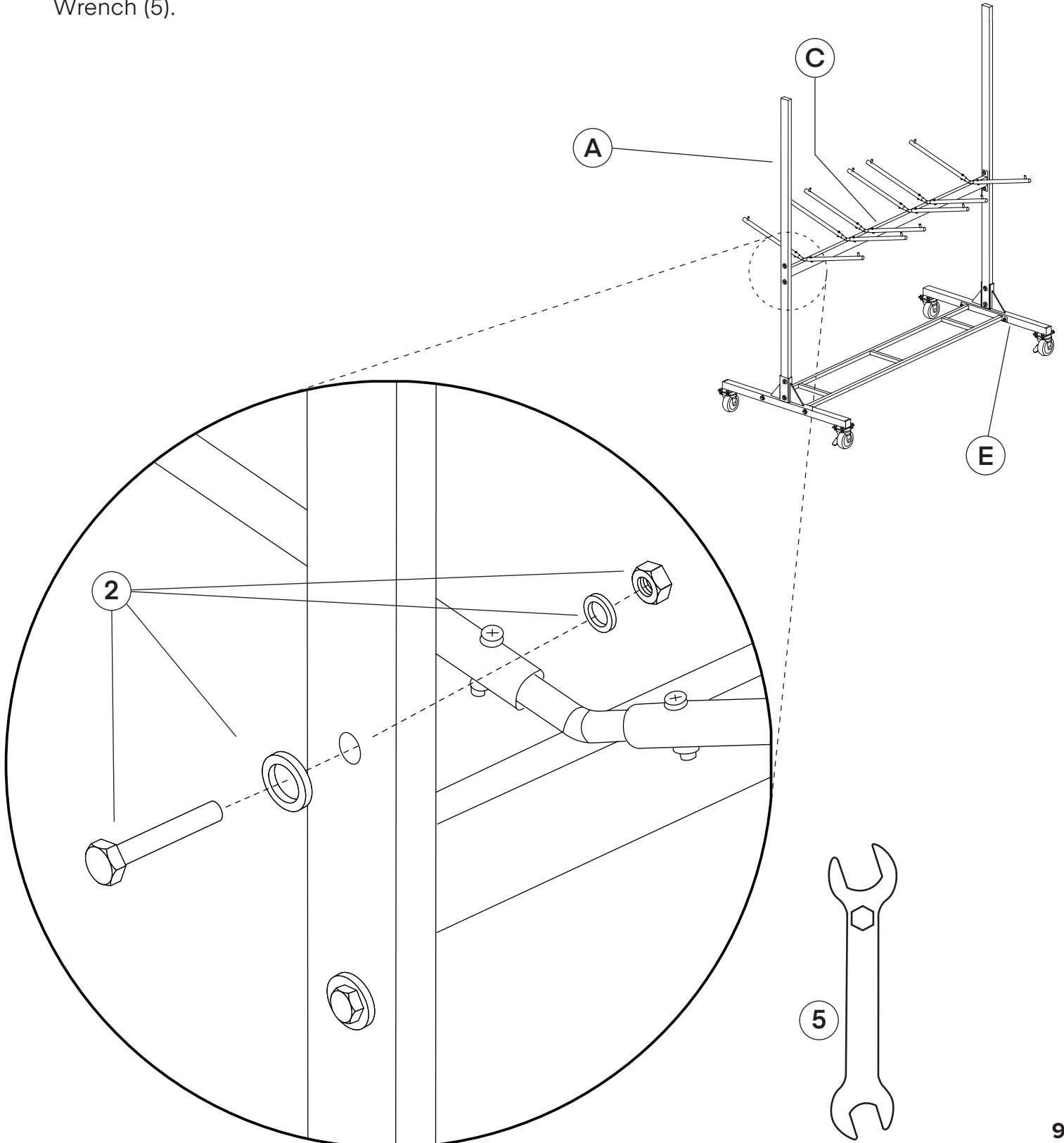
Step 3:

- A.** Attach one of the Caster Wheels (F) to the Base Rail (E), with four Small Bolts, Washers, and Lock Nuts (3) using the included Small Wrench (5), as pictured.
- B.** Repeat Steps 2 and 3 for the other Base Rail (E).



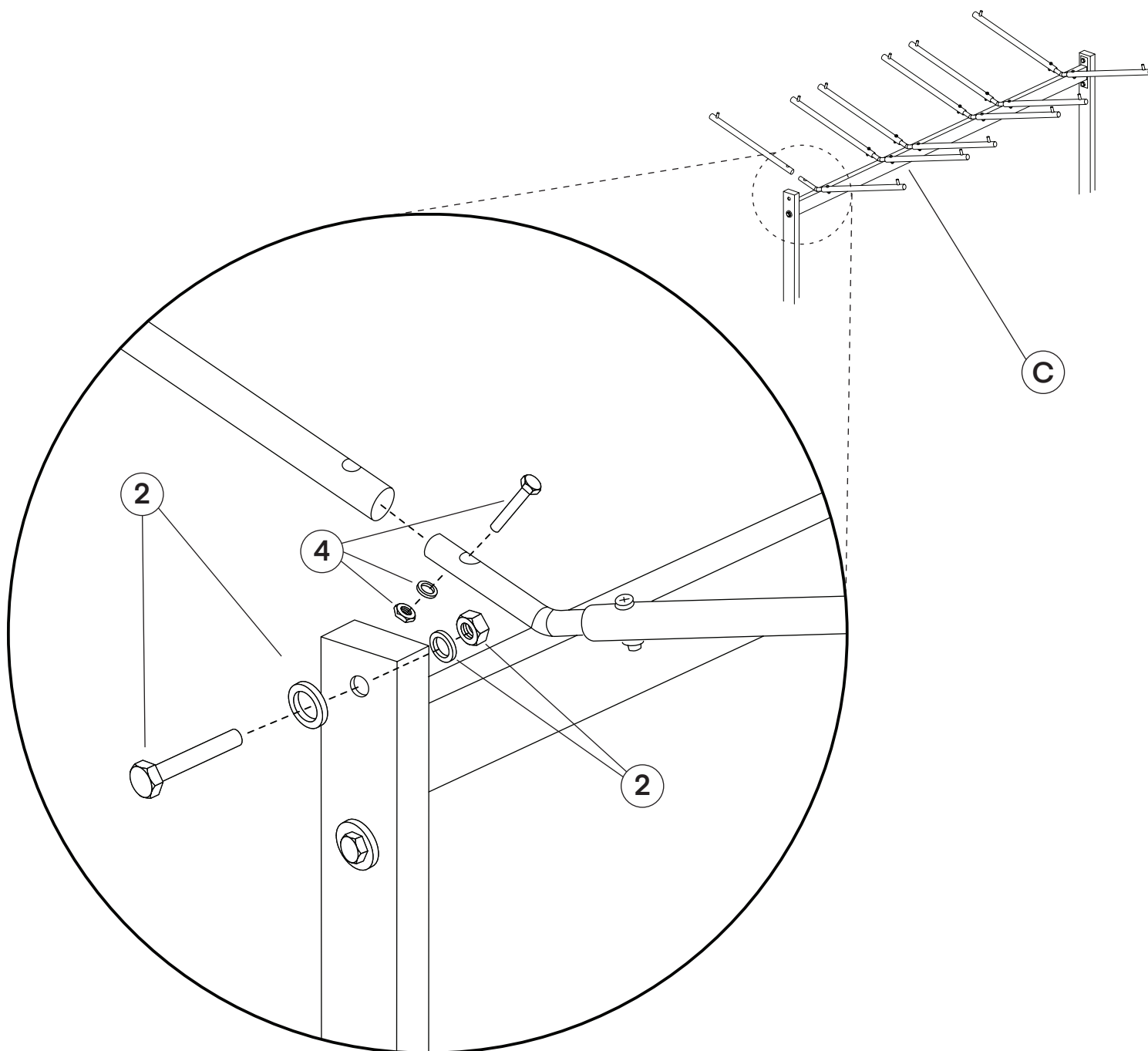
Step 4:

- A.** Locate the Upright Rails (A) and insert both into their designated slots on the top of the Base Rail (E).
- B.** Insert two Medium Bolts, Washers, Small Washers, and Lock Nuts (2) into both Upright Rails (A) and secure them with the included Small Wrench (5).
- C.** Locate and attach one of the Upper Rails (C) to each side of the Upright Rails (A) using two Medium Bolts, Washers, Small Washers, and Lock Nuts (2) per side, using the included Small Wrench (5).



Step 5:

- A.** Locate the other Upper Rail (C) and attach it to the top of the two Upright Rails (A) using two Medium Bolts, Washers, Small Washers, and Lock Nuts (2), with the included Small Wrench (5), as pictured.
- B.** Attach the twenty-four Chair Hangers (B) to both Upper Rail's (C), using the Small Bolts, Washers, and Lock Nuts (4), securing them with the included Small Wrench (5), as pictured.



Step 6:

- A.** Once you've finished securing your hardware, your Two-Tier Chair Cart is ready to use.

Using The Cart

- Stack chairs starting on the lower tier of the cart first, then stack chairs on the top tier.
- To properly hang chairs, place them upside down on the chair hangers until secure.
- Use the hanging rods with the larger space between them to hang chairs.
- Do not use more than 2 rods to hang each chair.
- Ensure to load both sides equally to avoid tipping and bending.
- Try to stack chairs in equal amounts on either side of the cart to prevent tipping.

Cleaning And Maintenance

- To clean your Two-Tier Chair Cart, dampen a cloth with water and clean where needed.
- Do not use any harsh chemicals or cleaning agents on this cart.
- Check the castor wheels occasionally to see if oil is necessary to lubricate them properly.

Warranty

1. Adir Corp (the "Company" or "Tiger Companies") warrants to the purchaser that the product will be free from defects in workmanship and materials for a period of 1 year from the date of purchase. The warranty period is not extended if we repair, replace, exchange, or provide a refund for the product (as determined in our sole discretion). We may change the availability of this limited warranty at our discretion, but any changes will not be retroactive.
2. These warranties are not assignable or transferable to any other person, including, without limitation, any subsequent owner or other transferee of the product.
3. This Warranty does not apply to: (a) damage caused by misuse, tampering, abuse, neglect, or accident; (b) damage caused by improper installation, modification, or service; (c) alteration of the serial number; or (d) use that violates the instructions furnished by the Company will void this warranty.
4. The sole responsibility of the Company shall be limited to (a) the repair or replacement (in its sole discretion) of any component of the product which fails to conform to this; (b) a refund the purchase price of such product (in its sole discretion), at no cost to the purchaser for the period of the warranty, or (c) an exchange for a similar product, comparable in function and price.
5. Contact the Company directly at 1-(800)-805-1790 to obtain service under this warranty. If it becomes applicable to send a defective product to the Company, a Return Authorization Number must first be obtained from the Company. In order to obtain service under this warranty, purchaser may be required to provide the Company with the following items (a) proof of purchase, (b) photographs and or videos (of the damage, and (c) a written testimonial describing the defect.
6. Products shipped without prior Return Authorization and Return Authorization Number may not be accepted, and the Company will not be responsible for their disposition and/or cost of return to the owner.
7. The Company will not assume any responsibility for any loss or damage incurred in shipping and or delivery.
8. The product(s) must be returned within 14 calendar days of receiving the return authorization from the Company and must include the original proof of purchase for the warranty to be honored.
9. Any implied warranties that the purchaser may have are limited to the duration of the warranties described above. There are no further warranties that extend or apply beyond the face hereof, and the Company expressly disclaims and excludes any and all warranties of merchantability or fitness for a particular purpose. Some states do not allow limitations on how long an implied warranty lasts, so the above limitation may not apply to you.
10. THE REMEDIES DESCRIBED ABOVE ARE YOUR SOLE AND EXCLUSIVE REMEDIES AND THE COMPANY'S ENTIRE LIABILITY FOR ANY BREACH OF THIS LIMITED WARRANTY. OUR LIABILITY SHALL UNDER NO CIRCUMSTANCES EXCEED THE ACTUAL AMOUNT PAID BY YOU FOR THE DEFECTIVE PRODUCT, NOR SHALL WE UNDER ANY CIRCUMSTANCES BE LIABLE FOR ANY CONSEQUENTIAL, INCIDENTAL, SPECIAL OR PUNITIVE DAMAGES OR LOSSES, WHETHER DIRECT OR INDIRECT. SOME STATES DO NOT ALLOW THE EXCLUSION OR LIMITATIONS OF INCIDENTAL OR CONSEQUENTIAL DAMAGES, SO THE LIMITATION MAY NOT APPLY TO YOU.
11. This warranty gives you specific legal rights, and you may also have additional rights which vary from state to state.



ADI690-03

© 2023 Adir Corp

adircorp.com