



Viva Comfort Grande Steel Exam Table

ADI996-09-S-BLK

ADI996-09-S-BLU



Viva Comfort Grande Steel Exam Table, Black

Our Viva Comfort Grande Steel Exam Table are made from robust steel to be corrosion resistant, withstand continual physical stress, and be simple to maintain, fortifying its longevity. The base of our table has a dual-sided, connecting cabinet, allowing you to position the table however you like without compromising on cabinet entry. For your frequently used medical items, the two euro-style drawers with stainless steel slides in the front of the base will offer you sufficient storage and access. As an added benefit, the drawers and doors of the table have been formulated to be soft closing for that added touch of comfort. A pull-out step stool is also in front of the table with a safety tread so patients can safely get on and off the exam table. We've outfitted each exam table with powder-coated adjustable stir-ups with contoured heel cups, allowing for comfortable foot placement.

Additionally, a pull-out leg rest can accommodate patients of various heights and allow for a more comprehensive examination. Our tables have a built-in paper dispenser compatible with 21.8" paper rolls, so you can quickly change the liner between patients. Our provided antimicrobial mattress is designed to provide a safe and hygienic environment for your patients by reducing the risk of cross-contamination. Our Viva Comfort Grande Steel Exam Table's extensive features make it the idyllic medical table you can trust to give you ample storage while not compromising on space and offering everything your patients need.

FEATURES

Accommodating: Adjustable backrest that can be positioned at different heights for the patient's optimal comfort.

Build: The stainless-steel frame maintains the longevity of the exam bed and is hassle-free to clean.

Convenience: A pull-out step stool is provided so patients can effortlessly get on and off the exam table.

Built-In: The included paper roll dispenser and paper cutter allows for quick changing of the liner.

Storage: Dual-sided cabinet and two front-facing euro-style drawers with stainless steel slides ensure plenty of space.

Sanitation: The antimicrobial mattress is designed to provide a safe and hygienic environment for patients by reducing the risk of cross-contamination.

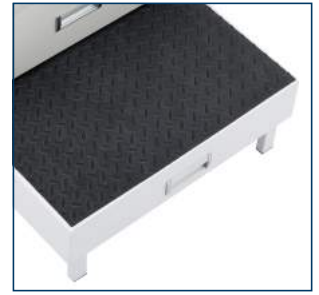
SPECIFICATIONS

Overall Size	58" L x 28" W x 31" H
Base Weight	176.37 lb.
Base Dimensions	47.64" L x 26.77" x 29.13" H
Cabinet Dimensions	22.44" L x 17.32" H x 22.83" D
Upper Drawer Dimensions	Internal Dimensions: 4.7" H x 15.7" D - Overall Width: 22"
Lower Drawer Dimensions	Internal Dimensions: 5.5" H x 15.7" D - Overall Width: 22"
Material	Steel
Finish	Powder Coating
Length with Leg Rest Extended	14.1"
Weight Capacity	500 lb.
Compatible Paper Roll Size	21.8" L x 2.28" H
Step Stool Dimensions	13" L x 22" W x 8.3" H
Ground To Top of Step Stool	8.3"
Certification	California CARB II Compliant
Mattress Weight	25.35 lb.
Mattress	1.97-inch Padded Foam Antimicrobial PU Leather Upholstery
Mattress Dimensions	58" L x 28" W x 1.97" H
Pullout Shelf Mattress	14.1" L
Max Backrest Angle	70°
Total Weight	201.72 lb.
Upholstery Options	Black / Midnight Express

FEATURES



Two Drawers



Retractable Step Stool



Dual-Sided Cabinet



Pull-out Leg Rest



Adjustable Back Rest



Adjustable Stir-Ups

ADI996-09-S-BLK



Viva Comfort Grande Steel Exam Table, Midnight Express

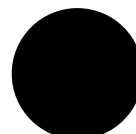


Paper Roll Storage

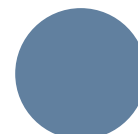


Paper Roll Dispenser and Cutter

UPHOLSTERY COLOR OPTIONS



Black



Midnight Express