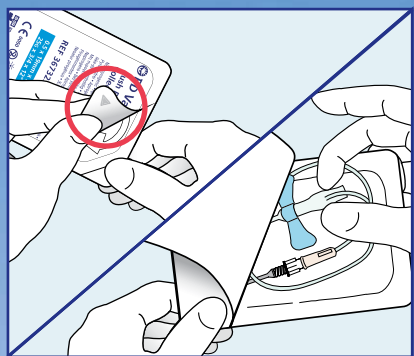


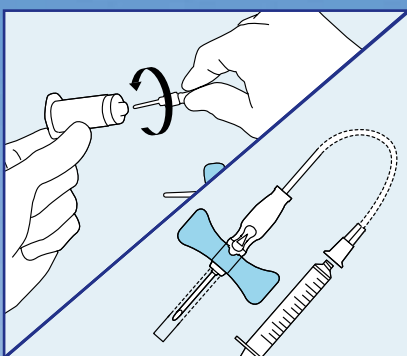
# BD Vacutainer® Push Button Blood Collection Set

## In-Vein Needle Activation at the Push of a Button

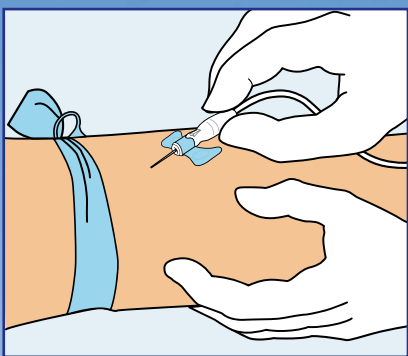
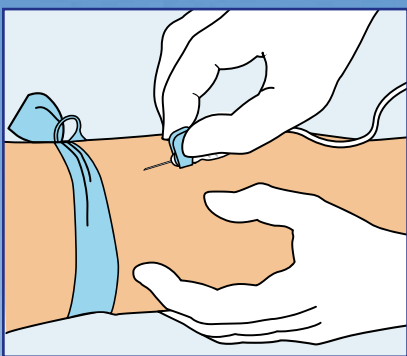
General Use and Disposal (See package insert for detailed directions for use.)



- 1a. Peel back packaging at arrow so that the back end of the wing set is exposed.
- 1b. With thumb and middle finger, grasp the rear barrel of the wingset and remove from package. Be careful to avoid activating the button.

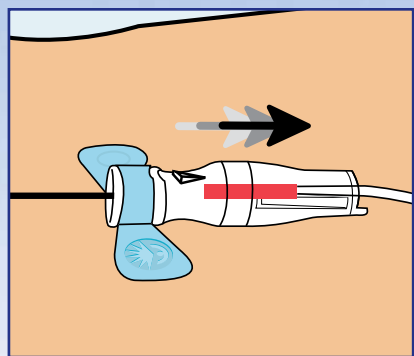


2. **CAUTION - Never use a blood collection set without a holder or syringe attached.**
- Assemble to BD Vacutainer® One Use Holder or BD Syringe.

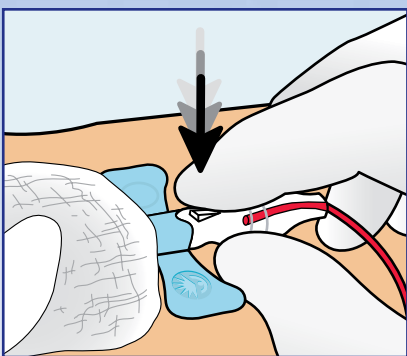


OR

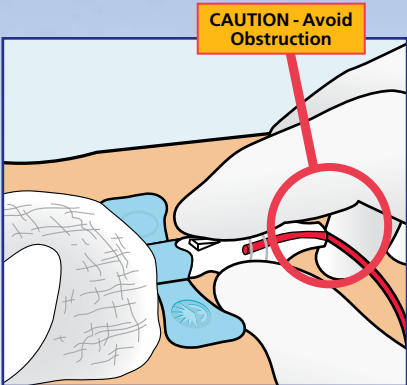
- 3a. With thumb and index finger, grasp the wings together and access vein using standard needle insertion technique.
- 3b. If preferred by your institution, the body of the device can be held, instead of the wings, during insertion.



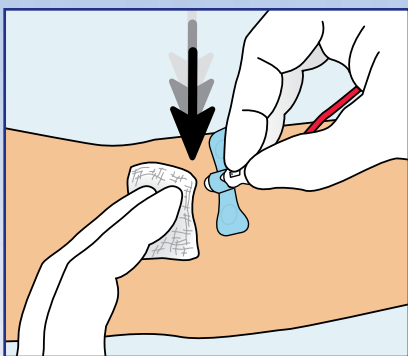
4. Proper access to the vein will be indicated by the presence of "flash" directly behind and below the button.



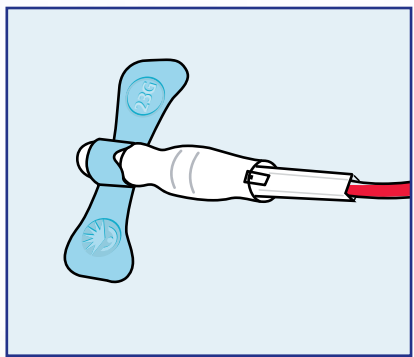
- 5a. **The device is designed to be activated while the needle is still in the patient's vein.** Place your gauze pad or cotton ball on the venipuncture site. Allow gauze pad or cotton ball to cover nose of front barrel. Following the collection procedure, **and while the needle is still in the vein**, grasp the body with the thumb and middle finger. Activate the button with the tip of the index finger.



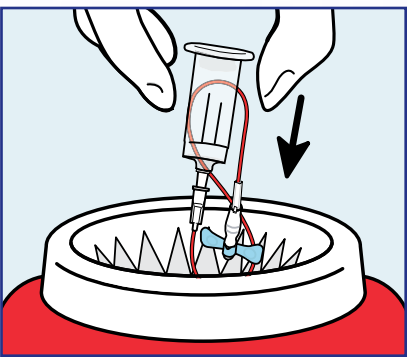
- 5b. To ensure complete and immediate retraction of device, make sure to keep fingers and hands away from the end of the blood collection set during retraction. Do not impede retraction.



6. Apply pressure to the venipuncture site in accordance with your facility's protocol.



7. Confirm that the needle is in the shielded position prior to disposal.



8. Discard the entire shielded blood collection set and holder into an approved sharps disposal container.

### Ordering Information

BD Vacutainer® Push Button Blood Collection Sets						
Facility Reference Number	BD Reference Number	Needle Gauge	Wing Color	Tubing Length	Configuration	Packaging
	367338	21	21G	7"	with luer	50/Box 200/Case
	367344	21	21G	12"	with luer	50/Box 200/Case
	367326	21	21G	12"	without luer	50/Box 200/Case
	367336	23	23G	7"	with luer	50/Box 200/Case
	367342	23	23G	12"	with luer	50/Box 200/Case
	367324	23	23G	12"	without luer	50/Box 200/Case
	367341	25	25G	12"	with luer	50/Box 200/Case
	367323	25	25G	12"	without luer	50/Box 200/Case
	367335	25	25G	7"	with luer	50/Box 200/Case

BD Vacutainer® One Use Holder			
Facility Reference Number	BD Reference Number	Description	Packaging
	364815	One Use Holder	250/Bag 1,000/Case

BD Global Technical Services: 1.800.631.0174  
vacutainer\_techservices@bd.com  
BD Customer Service: 1.888.237.2762  
www.bd.com/vacutainer

#### CAUTION:

Handle all biologic samples and blood collection "sharps" (lancets, needles, luer adapters, and blood collection sets) in accordance with the policies and procedures of your facility. Obtain appropriate medical attention in the event of any exposure to biologic samples (e.g., through a puncture injury) since samples may transmit viral hepatitis, HIV (AIDS), or other infectious diseases. Utilize any safety-engineered feature if the blood collection device provides one. Discard all blood collection "sharps" in biohazard containers approved for their disposal.



Helping all people  
live healthy lives

BD Diagnostics  
Preanalytical Systems  
1 Becton Drive  
Franklin Lakes, NJ 07417  
www.bd.com/vacutainer