



SCHILLER
The Art of Diagnostics



CARDIOVIT AT-102

Perfect 12-Leads EKG solution

PERFECT 12-LEADS EKG SOLUTION

THE HIGH-QUALITY EKG THAT MEETS THE HIGHEST DEMANDS AND OFFERS EXCELLENT VALUE FOR MONEY

The AT-102 is a versatile EKG that offers speed, simplicity, and options that adapt to your practice needs and help you provide the best patient care at an affordable price.

The user interface and intuitive operation increase productivity and efficiency while offering great value for money.

The **CARDIOVIT AT-102** is a resting EKG system particularly suitable for routine use in practice, clinic, or emergency medicine due to its intuitive and easy operation with direct function keys.

The integrated **high-resolution** A4 real-time printer guarantees long-term storage of EKG recordings in archive quality.

On its brilliant graphic display, all **12 EKG leads** can be displayed in freely selectable sequences of 3, 6, or 12. Recording's printout includes interpretation and measurements.

The recording's printout includes interpretation and measurements.

Take fast EKG readings with the touch of a button and ensure accuracy by following simple on-screen instructions.

SCHILLER AT-102 EKG is the best choice for:

- Primary Care
- Clinics
- Urgent Care
- Cardiologist
- For any physician who needs a reliable EKG

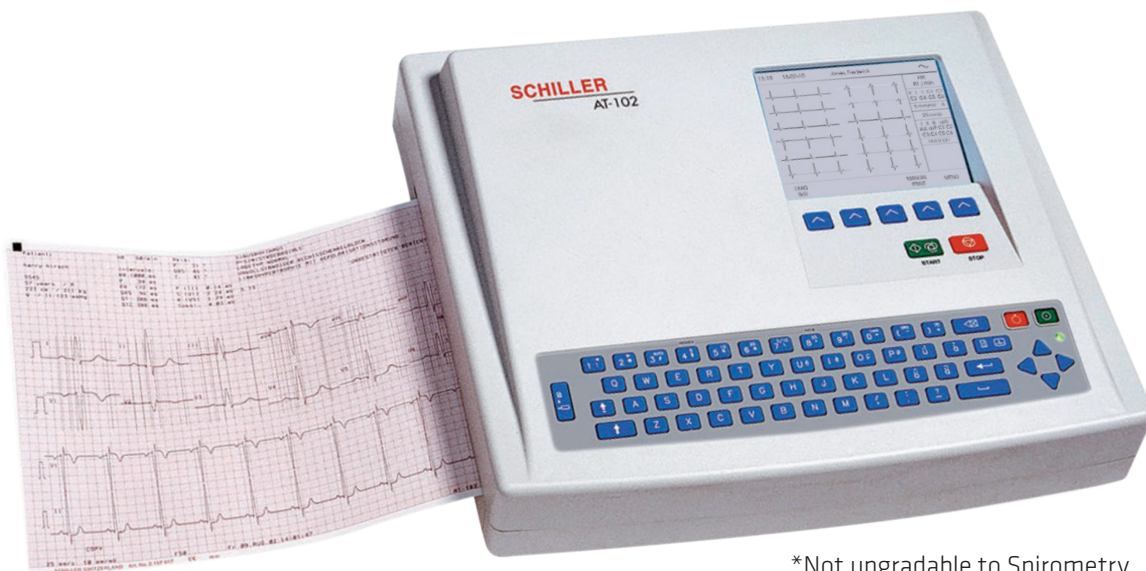


RESTING EKG

BEST QUALITY PRICE RATIO STANDALONE EKG

PN 9.070000*

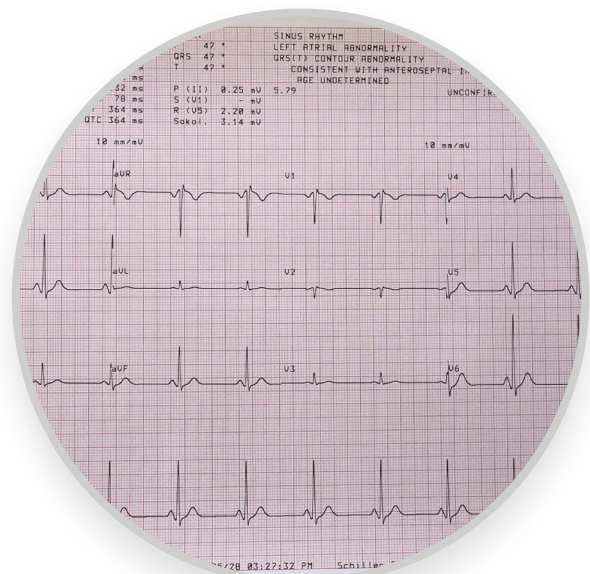
The **CARDIOVIT AT-102** is an excellent **12-lead EKG** that records and automatically analyzes resting EKGs and resting rhythms. This standalone compact EKG provides comprehensive functionality to meet the demands of any physician's office.



*Not upgradable to Spirometry

FEATURES

- Intuitive and one-key operation offers a short learning curve for staff.
- 12-leads resting EKG.
- Interpretation.
- Internal memory for up to 40 records.
- Integral full-size thermal quality printer with various user-defined print format options.
- Full-size keyboard.
- Dedicated soft key interface for easy, user-friendly operation.



TECHNICAL DATA



SYSTEM

Dimensions	400 x 330 x 101 mm, approx. 5 kg.
On-screen status indicators	Battery status, date, time, power source.
Control panel and keyboard	User-friendly, alphanumeric keyboard, LED indicator and LC display.
Power supply requirements	220–240 V (nominal), 50/60 Hz; 110–115 V (nominal), 50/60 Hz; standalone operation with built-in rechargeable battery; LED indicator for mains operation; integrated power supply unit.
Battery capacity	4 hours of regular use (approx. 300 automatic EKG printouts).
Power consumption	Max. 30 VA.
Line frequency filter	Distortion-free suppression of superimposed 50 or 60 Hz sinusoidal interferences using adaptive digital filtering (SCHILLER Powerline Filter SPF).
Frequency range of digital recording system	0 Hz – 150 Hz (IEC/AHA).
Chart paper	Thermo-reactive, Z-folded, 210 mm wide (A4, 8.5 x 11 inches).
Printing process	High-resolution thermal head printer, 8 dots/mm (amplitude axis), 40 dots/mm (time axis) @ 25 mm/s.
Memory	Possibility to save up to 40 Resting EKG or Spirometry measurements.
Environmental conditions	Temperature, operating: 10° to 40°C Temperature, storage: -10° to 50°C Relative humidity: 25 to 95% (no condensation) Pressure during operation: 700 to 1060 hPa.



TECHNICAL DATA FOR EKG

Patient input circuit	Fully floating and isolated, defibrillation-protected (only with original SCHILLER patient cable).
Monitor display	- 3- 6 or 12-channel display of the selected leads - 25, 50 mm/s - 5, 10, 20 mm/mV - Filter status (on/off) - Insufficient electrode contact Heart Frequency, HF mm/ mV, mm /s
Leads	12 simultaneous leads: Standard / Cabrera.
Chart printout speed	5/10/25/50 mm/s (manual print)
Sensitivities	5/10/20 mm/mV, either automatically adjusted or manually selected.
Automatic lead programs	6/12-channel presentations of 12 simultaneously recorded standard leads on one or more A4 (8.5 x 11 inches) pages. Numerous printout formats can be selected.
Data record	- Patient data (name, age, height, weight, BP), Patient ID. - Listing of all ECG recording conditions (date, time, filter).
Recording track	6/12-channel presentation, optimal positioning on a width of 200 mm, automatic baseline adjustment.
Filter	Myogram filter (muscle tremor filter): 25 Hz or 35 Hz, can be switched on/off (SCHILLER Baseline Stabilizer SBS, SCHILLER Smoothing Filter SSF).
ECG amplifier	- Simultaneous recording of all 9 active electrode signals (=12 leads). - Pacemaker detection: 2 mV/ 0,1 ms.

TECHNICAL DATA



SAFETY STANDARDS

Safety Standards	IEC/EN 60601-1; UL 60601-1; C22.2 No. 601.1-M90; IEC/EN 60601-2-25; IEC/EN 60601-1-2 (EMC)
Protection Class	Class I: According to IEC/EN 60601-1 (with internal power supply).
Applied Part	CF according to IEC/EN 60601-1.
Conformity	According to Directive 93/42/EEC (Medical Devices).
Classification	CE/IIa according to 93/92/EEC.



MOUNTING OPTIONS

Rolling stand	PN 2.101125SAM (Medical Devices).
----------------------	--------------------------------------

SCHILLER

A M E R I C A S



Call Us:
+1(786) 485-0620



Visit us at:
www.schillerus.com



10903 NW 33rd Street
Doral FL, 33172, USA.

