

## Panel Leg Series, Treatment Table with Shelf & Drawers



### MODELS: 91013-27 & 91013-30

- All laminate construction
- Sleek panel leg design
- Laminate shelf & two drawers with easy-clean, plastic interiors
- Adjustable backrest with 6 settings of approximately: 27°, 36°, 43°, 50°, 55° & 60°
- Scratch resistant topcoat finish
- Fast and easy assembly
- Seamless rounded corner top
- 2" firm foam padding (5 cm)
- Heavyweight, knit-backed upholstery
- 400 lbs. load capacity under normal use (181.43 kg)


### SPECIFICATIONS

91013-27: 72" L x 27" W x 31" H

91013-30: 72" L x 30" W x 31" H



### Prop 65 Warning

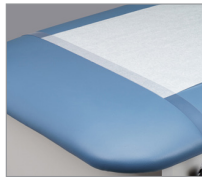


**WARNING:** This product can expose you to chemicals, including chromium, which is known to the State of California to cause cancer or reproductive toxicity. For more information go to [www.P65Warnings.ca.gov](http://www.P65Warnings.ca.gov).

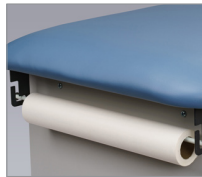
### Options



034– Paper Dispenser & Cutter Combo



040– Paper Cutter



030– Paper Dispenser



088–Flat Top



055– Door & Drawer Locks



009–Nose Hole

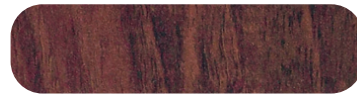
### Laminate Colors



Gray



Maple



Dark Cherry

### Upholstery Colors



Slate Blue



Wedgewood



Royal Blue



Desert Tan



Burgundy



Country Mist



Warm Gray



Gunmetal



Black