

MONITOR YOUR PATIENTS **SAFELY AND ACCURATELY.**

Temperature monitoring probes and sensors

The operating room and emergency department. The intensive care area, postanesthesia care unit, and general care floor.

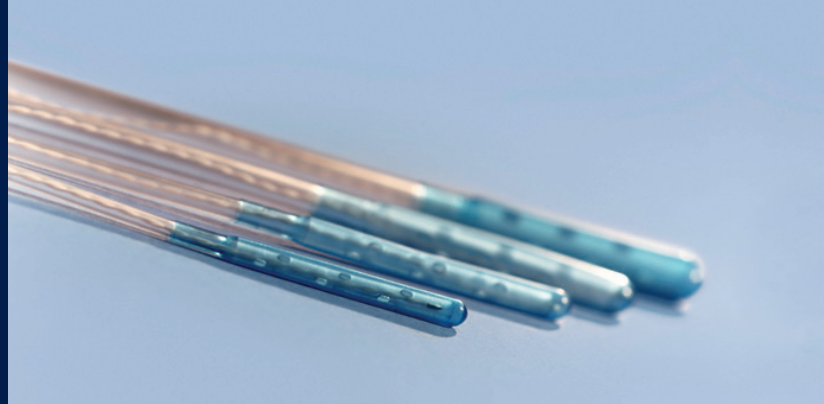
Wherever you are, we're there for you. With our comprehensive line of accurate and reliable temperature probes and sensors. Your single source meeting a range of clinical needs.

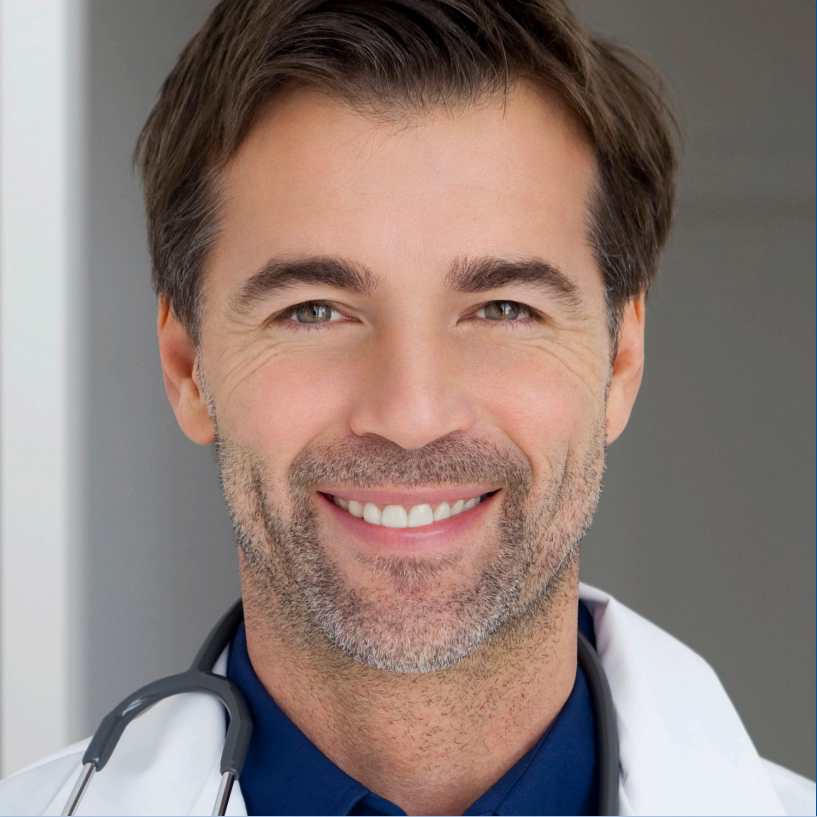
Our temperature monitoring products:

- Quickly and accurately reflect changes in core body temperature
- Are single-patient use for convenience and infection control
- Are compatible with multifunction patient monitors

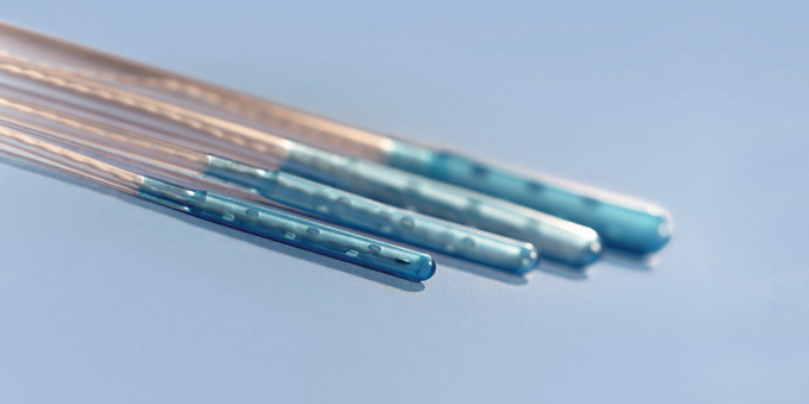
Placement sites include:

- Nasopharyngeal
- Esophageal
- Rectal
- Axillary





MORE CHOICES TO MEET YOUR NEEDS



Esophageal stethoscope with temperature sensor (EST)

Offers accurate, continuous measurement of core body temperature. Available in adult sizes. It features:

- Soft, thin cuff for outstanding clarity of heart and lung sounds
- Atraumatic tip and Satin Slip™ finish for easy insertion and greater patient safety
- Male luer fitting to conveniently attach to standard acoustical ear pieces
- Depth markings for proper placement
- Temperature sensor and cuff at distal end

Foley catheter with temperature sensor

Provides urinary bladder drainage while measuring core body temperature at this insulated site. Excellent for use in the intensive care unit and general care floor. Available in adult sizes. It:

- Has 100% silicone construction to help reduce irritation and resist encrustation
- Can be used before, during, and after surgery
- Features a long, strong wire to keep connector away from your patient
- Has side-arm design encasing lead wires and connectors for added strength and moisture resistance



General purpose probe

This versatile probe may be used for esophageal, nasopharyngeal, or rectal placement — helping simplify inventory. It features:

- Satin Slip™ finish for easy, atraumatic insertion
- Fully enclosed sensor design for greater patient safety
- Extra-long Kevlar™-reinforced lead wire

Skin temperature sensor

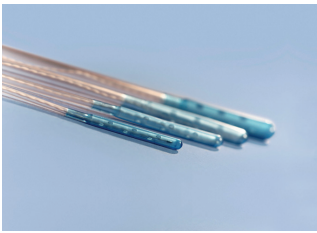
Versatile and noninvasive. Offers easy placement and accurate, reliable temperature monitoring. It features:

- Rapid response to skin surface temperature changes
- Foam pad to help assure skin temperature accuracy by reducing environmental temperature influences
- Long sensor wire for patient movement
- Hypoallergenic adhesive that gently adheres to skin for optimal patient comfort

ORDERING INFORMATION

For temperature monitoring products

Esophageal stethoscopes with temperature sensor

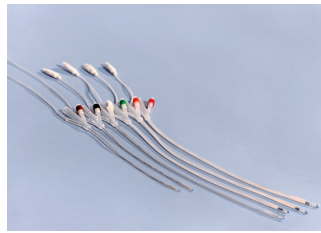


400TM series

EST

9 Fr	50/case	90049
12 Fr	50/case	90041
18 Fr	50/case	90042
24 Fr	50/case	90043

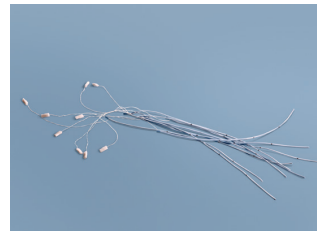
Foley catheters with temperature sensor



400TM series

8 Fr	20/case	90053
10 Fr	20/case	90054
12 Fr	20/case	90055
14 Fr	20/case	90056
16 Fr	20/case	90051
18 Fr	20/case	90052

General purpose probes



400TM series

9 Fr	100/case	90050
12 Fr	100/case	90044

Skin temperature sensor



400TM series

100/case	90045
----------	-------

Interface cables



YSI 400-compatible

16 ft.	1/case	5020400A
--------	--------	----------

Cable

10 ft.	1/case	5020410A
--------	--------	----------

Siemens cable

16 ft.	1/case	5020405A
10 ft.	1/case	5020415A

Philips/HP cable

16 ft.	1/case	5020401A
10 ft.	1/case	5020411A

Photo credit Thinkstock

©2017 Medtronic. All rights reserved. Medtronic, Medtronic logo and Further, Together are trademarks of Medtronic. ^{TM*} Third party brands are trademarks of their respective owners. All other brands are trademarks of a Medtronic company. 11/2017-14-PM-0031(1)-[WF#1365569]