



Caprosyn™ Monofilament Synthetic Absorbable Suture

WHY USE Caprosyn™?

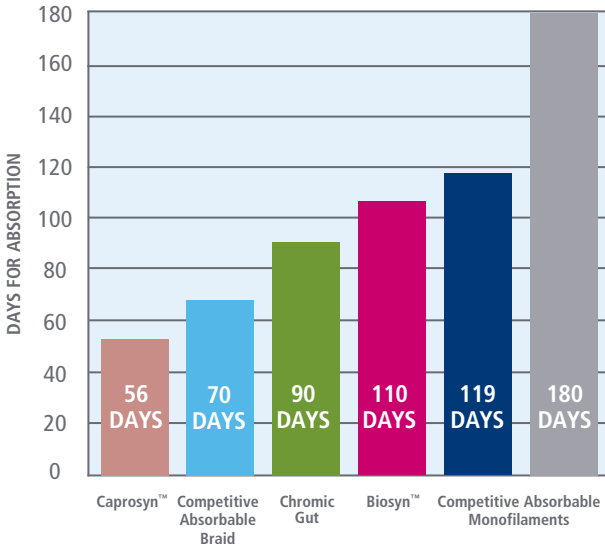
THE IMPORTANCE OF SPEED FOR RECOVERY—QUICK ABSORPTION CAN LESSEN WOUND COMPLICATIONS

Patients can experience less discomfort during healing. Caprosyn™ suture’s quick absorption, durable polymer material and monofilament construction means smooth passage through tissue, better approximation or ligation, and minimized potentiation of infection. In other words, working toward a faster recovery for your patients.

Specifically, Caprosyn™ sutures deliver a much faster absorption rate than other USP synthetic absorbable sutures—essentially complete in 56 days.

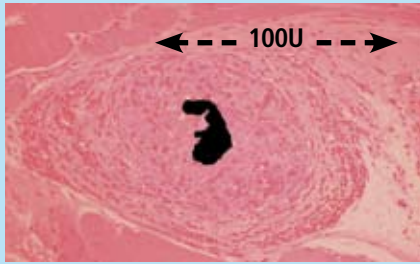
- Can experience less discomfort
- Smooth Passage
- Better approximation or ligation
- Minimized potentiation of infection
- Faster recovery

Suture Mass Absorption (in-vivo)

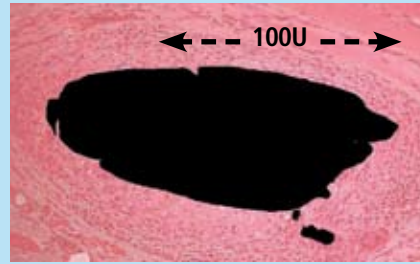


Caprosyn™ vs. Monocryl™

56 days post implantation (under magnification)



Caprosyn™ 3% Suture Remaining



Monocryl™ 91% Suture Remaining

Advantages of Caprosyn™ Over Gut Suture

- **Lower Tissue Reactivity** – Synthetic suture is inherently less reactive and may reduce the chances of scarring and adhesions.
- **Suture Integrity** – Caprosyn™ maintains integrity after multiple passes whereas Gut suture may fray after multiple passes.
- **Predictable Strength and Absorption Profiles** – Gut may display inconsistent strength and absorption profiles based on the variable factors involved in enzymatic absorption and in the gut material itself.
- **Less Tissue Drag** – Monofilament surface of Caprosyn™ results in less tissue drag than the twisted surface of Gut suture.
- **Superior Handling** – Caprosyn™ is extremely easy to handle and tie compared to Gut suture.
- **Superior Strength Out-of-Package** – Caprosyn™ is stronger out-of-package and provides secure wound approximation for ten days.
- **Reduced Potentiation of Infection** – The enzymatic degradation of Gut suture is reactive to the host tissue and typically results in greater bacterial presence than Caprosyn™, which is degraded by hydrolysis.

Frequent Uses

Plastic Surgery, General Subcuticular Closure, OB/GYN, Urological and ENT.

Indications

Indicated for use in general soft tissue approximation and/or ligation, but not for use in cardiovascular or neurological surgery, microsurgery, or ophthalmic surgery.

Contraindications

Being absorbable, Caprosyn™ suture should not be used where extended approximation of tissue is required. Users should be familiar with surgical procedures and techniques involving absorbable sutures.

Specifications

Composition	Glycolide, Caprolactone, Trimethylene Carbonate and Lactide
Sizes	6/0 – 1
Color	Undyed & Violet
Units Per Box	1 dozen, 2 dozen, 3 dozen
Lengths	18, 30, 36, 60-inch lengths, as well as Pre-Cut and Reels
Absorption Profile	Essentially Complete in 56 days
Tensile Strength	60% USP Knot Pull at 5 days 20–30% USP Knot Pull at 10 days
Needle Availability	Extensive variety of types, shapes, and lengths

Learn more: www.covidien.com/syneture
or place your order at: 1 800 722 8772.



COVIDIEN, COVIDIEN with logo and "positive results for life" are trademarks of Covidien AG.
© 2008 Covidien AG or its affiliates. All rights reserved.
379248 SS 3M 3.08 CBR000141