



DETECTO Model 7150 Portable Wheelchair Scale Setup Instructions



CAUTION! The DETECTO Model 7150 Portable Wheelchair Scale is heavy. If you are unable to lift or lower the scale safely, obtain assistance to team lift or lower the scale. Dropping the scale or allowing it to fall from the transport position can damage the load cells. Any damage determined to be caused by dropping or falling will void the warranty.

Scale Setup



CAUTION! Do not remove the Storage Pin or operate the Column Release Lever until the scale is in position on the floor.

1. From the transport position, lay the scale flat on the floor. **DO NOT** use the scale on carpeted floors.
2. Stand close to the scale with your feet 8 to 12 inches apart and firmly grasp the handle openings on the scale.
3. While stepping back, lower the scale to the floor, keeping your back straight and bending your knees until you are in a squatting position.
IMPORTANT! Always keep your back straight, and bend at the knees, until in a squatting position!
4. Once the scale is in position on the floor, remove the Storage Pin.
5. Next, pull the Column Release up toward the indicator to release the column from the scale base.
6. Grasp the column handlebars and lift the column away from the scale base.
7. Step forward to push the column forward until it is completely upright and in the locked position. Listen for a "clicking" sound to make sure the column is locked in the upright position.

DETECTO

102 E. Daugherty, Webb City, MO 64870 USA
Ph: 417-673-4631 or 1-800-641-2008 • Fax: 417-673-2153
Technical Support: Phone 1-866-254-8261 or E-mail: tech@cardet.com



DETECTO Model 7150 Portable Wheelchair Scale Operating Instructions



WARNING! Only the attendant is permitted to move the wheelchair on and off the scale platform. Attendant must assist patient onto and off the scale platform.

NEVER leave a patient unattended while on the scale platform. The attendant must always maintain control of the patient. Failure to do so may result in severe injury to the patient and/or the attendant.

Wheelchair Operation

Zero Weight Display

1. Press the **ON/OFF** key to turn the scale on.
2. If the scale is not showing zero (0.0) weight on the display, press the **ZERO** key.
3. The weight display will return to zero (0.0) to show that the scale is ready to use.

Zero Weight Display with Empty Wheelchair on Scale

1. Press the **ON/OFF** key to turn the scale on.
2. When the weight display is showing zero (0.0), place the empty wheelchair on the scale and press the **TARE** key.
3. The display will change to show ENTER TARE WT and the weight of the wheelchair.
4. Press the **PRINT/ENTER** key.
5. The display will return to zero with the NET annunciator turned on, to show that net weight is being displayed. The wheelchair's weight has been entered as "tare weight".
6. Proceed with the weighing operation.

Weighing Patient

1. Press the **ON/OFF** key to turn the scale on.
2. Verify the weight display reads zero (0.0), then carefully position the patient and wheelchair on the scale platform.
IMPORTANT! Always lock the wheelchair wheels before weighing the patient.
3. Allow the weight reading to stabilize, then read and record the patient's weight.
4. Carefully remove the patient and wheelchair from the scale platform.

Storing the Scale

1. Pull the Column Release Lever up towards the indicator to release the column from the operating position.
2. Grasp the handlebars and step backward, lowering the column until it rests completely against the scale platform.
3. Press down on the handlebars and listen for a "clicking" sound to confirm the column is locked in the storage/transport position.
4. Insert the Storage Pin into the scale before lifting or moving it.
5. Store the scale flat on the floor, preferably near a wall for maximum protection against damage.

Printed in USA

0065-1004-1M Rev A 01/26



Model 7150 Wheelchair Scale Ramps, Ramp Straps, and Ramp Guide Rails Installation Instructions

UNPACKING

Before starting to assemble, please unpack and remove all wrappings and fillers. Carton contains:

Qty.	Item Description
2	7150 Ramp Weldments
2	Ramp Straps
12	.25-20 X 0.438 in Flat-Head Socket Cap Screw Zinc Plated
6	10-24 X 0.375 in Round-Head Machine-Screw
1	5/32 in. Short Hex Key
1	0.5 ml Packet High Strength Thread Locker

RAMP INSTALLATION



IMPORTANT! Ensure the column is fully locked in the storage/transport position before proceeding.

Refer to Figures No. 1 and 2, then follow the steps below to install the ramps.

1. Lift the scale and place the platform on its side in the transport position. Have an assistant support the platform while the ramps are being installed.

2. Attach each ramp as follows:

- Begin with the top rubber mount. Apply thread locker to the first screw. While holding the ramp against the top rubber mount, hand-thread the screw into the mount (See Figure No. 1).
- Apply thread locker to the second screw. While holding the ramp against the bottom rubber mount, hand-thread the screw into the mount.
- Using the supplied 5/32 in. short hex key, tighten both screws securely (See Figure No. 2).

NOTE: When installing screws into the rubber mount, be careful not to over-tighten.

3. Repeat Step 2 for the ramp on the opposite side of the platform.

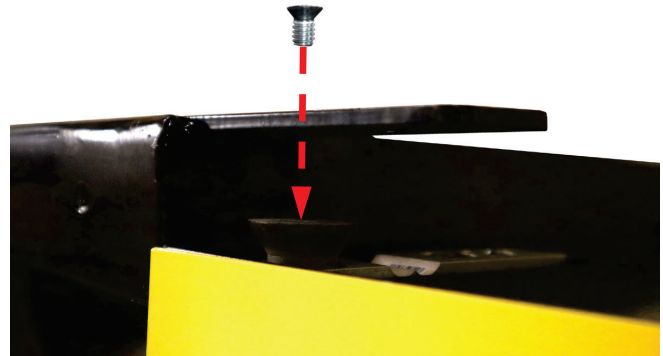


Figure No. 1

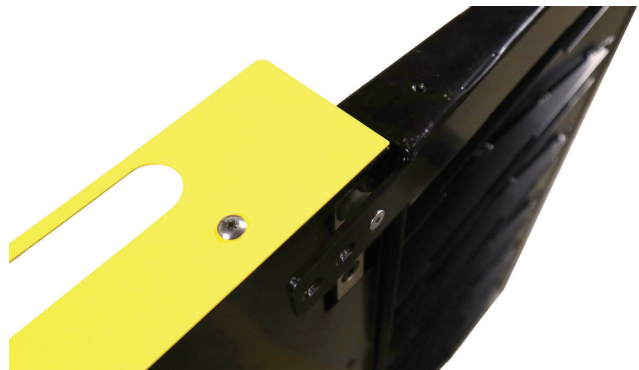


Figure No. 2

DETECTO

102 E. Daugherty, Webb City, MO 64870 USA
Ph: 417-673-4631 or 1-800-641-2008 • Fax: 417-673-2153
www.Detecto.com

Technical Support: Phone 1-866-254-8261 or E-mail: tech@cardet.com



Model 7150 Wheelchair Scale Ramps, Ramp Straps, and Ramp Guide Rails Installation Instructions

RAMP STRAP INSTALLATION

Refer to Figures No. 3 and 4, then follow the steps below to install the ramp straps.

1. Attach the first end of a ramp strap:
 - Position the flat side of the ramp strap beneath the extended mounting tab on the ramp, aligning the strap with the two mounting holes.
 - Apply thread locker to the first screw. While holding the strap in place, hand-thread the screw through the mounting tab and into the strap (See Figure No. 3).
 - Apply thread locker to the second screw. Hand-thread it through the mounting tab and into the strap.
 - Using the supplied 5/32 in. short hex key, tighten both screws securely (See Figure No. 4).
2. Attach the opposite end of the same ramp strap to the platform using the same procedure.
3. Repeat Steps 1 and 2 for the ramp strap on the opposite side of the platform.

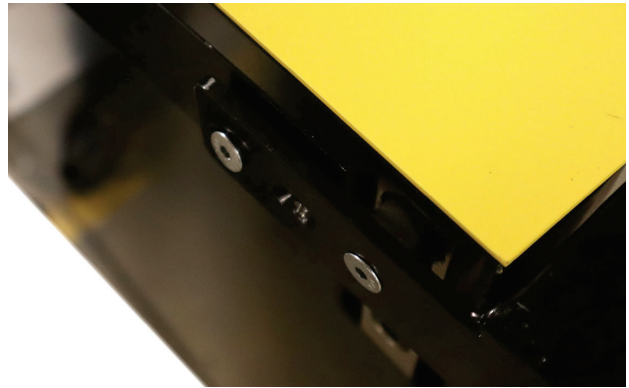


Figure No. 3

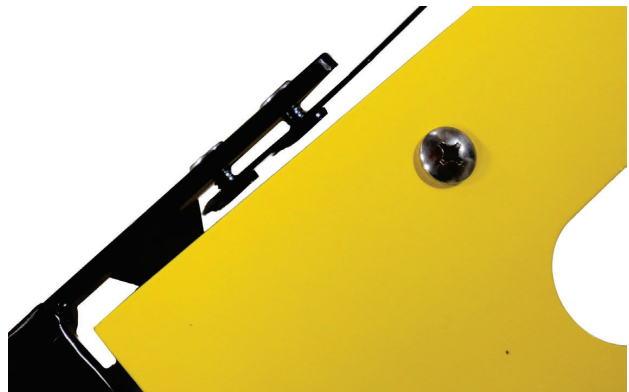


Figure No. 4

RAMP GUIDE RAIL INSTALLATION

TOOLS REQUIRED

- No. 2 Philips screwdriver (power screwdriver recommended)

Refer to Figure No. 5, then follow the steps below to install the ramp guide rails.

1. Place the platform on the floor in the **storage position**.
2. Position a ramp guide rail against one side of the ramp. Install two round-head screws through the guide rail and into the ramp, then tighten the screws securely (see Figure No. 5).
3. Repeat Step 2 to install the ramp guide rail on the opposite side of the ramp.
4. Repeat Steps 2 and 3 to install the ramp guide rails on the ramp at the opposite end of the platform.

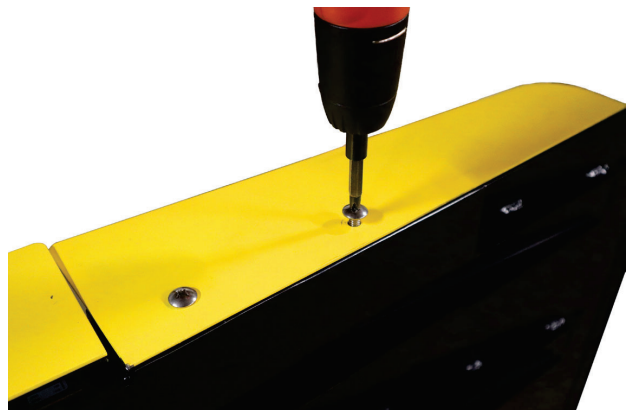


Figure No. 5