



- Sundry Jars
- Countertips
- Diagnostic Instruments
- Stainless Steelware
- Exam Room Equipment
- Sundry Items
- Wheelchairs
- Patient Care Products
- Phlebotomy Chairs
- EMS Supplies



*Medical Equipment  
and Sundries  
for Healthcare Professionals*

## Glass Sundry Jars

### Item # 4010 : Labeled

- 7" x 4 1/4" Flint Glass
- Blue Imprint
- Stainless Steel Lids
- 5 Jars per Case

U/M: CS

### Item # 4009 : Labeled Red Imprint

- Same as 4010

U/M: CS

### Item # 4012 : Unlabeled

- 7" x 4 1/4" Flint glass
- Stainless Steel lids
- 6 Individually boxed jars per case

U/M: CS

## Plastic Sundry Jars

- Item # 4011 : Clear, Imprinted
- Item # 4018 : Opaque, Imprinted
- Item # 4019 : Clear, No Imprint

- Size : 6 1/2" x 4 1/4"
- 5 Jars/Set

U/M : CS



## Sundry Jar Rack

### Item # 4020

- Free up valuable counter space
- Prevents breakage
- Holds both plastic and glass jars
- Made of vinyl coated steel for durability
- Includes hardware

U/M : EA



## Plastic Dressing Jars

### Item # 4021 : Clear, No Imprint

- New Size : 4" x 4"
- Set of 5 Clear Plastic Jars

U/M : CS



## Glass Dressing Jars

- Flint glass jars
- Stainless steel lids
- 6 Individually boxed Jars per case

U/M : CS



Item # 4014  
• 3" x 3"



Item # 4013  
• 4" x 4"



Item # 4017  
• 7" x 3"



Item # 4008  
• 8 1/2" x 4"

*Exclusive*



## Dressing Jar Rack

**Item # 4023**

- Perfect for all size jars
- Holds both Glass and Plastic Jars
- Can be wall mounted or used on counter top
- Vinyl coated steel
- 14" Width x 5" Depth x 6" Height
- Includes mounting hardware

**U/M : EA**



## Glove Box Holders

- Can be mounted on a wall or counter top
- Can be horizontally or vertically mounted
- Vinyl coated steel
- Includes Mounting Hardware

**U/M : EA**

### Glove Box Triple Holder

**Item # 4063**

- Holds 3 standard glove boxes
- 17.3" x 4.3" x 7.7"

### Glove Box Double Holder

**Item # 4064**

- Holds 2 standard glove boxes
- 11.8" x 4.3" x 7.7"

### Glove Box Holder

**Item # 4065**

- Holds 1 standard glove box
- 5.9" x 4.3" x 7.7"



## Lotion Pump

**Item # 4026**

- Dispensing design produces a steady stream of liquid controlled by finger pressure
- Size : 4 3/4" x 2 1/2"
- 12/Box

**U/M : BX**



## Pill Envelopes

- Heavy weight, imprinted envelopes
- Ample room for patient information

### Self Adhesive

**Item # 4421**

- Self adhesive
- Size: 3 1/2" x 2 1/4"
- 500/bx

**Item # 4415**

- Apply moisture to seal
- Size: 3 1/2" x 2 1/4"
- 1000/bx

**U/M : BX**



## Alcohol Bottles

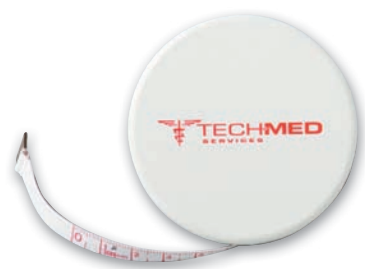
**Item # 4024 (imprinted)**

**Item # 4025 (no imprint)**

- Unique push down dispensing design prevents cross contamination by not allowing dispensed fluid to return to bottle
- Locking cap prevents fluid from leaking out
- Size: 4 3/4" x 2 1/2"
- 12/box

**U/M: BX**





### 120" Retractable Tape Measure

Item # 4422

- Durable linen-like fiberglass tape
- Graduated English Scale & Metric on reverse side
- White plastic case with push button to retract tape measure
- Length 120", Width 1/4"
- 6 per box

U/M: BX

### 72" Retractable Tape Measure

Item # 4414

- Durable linen-like fiberglass tape
- Graduated English Scale & Metric on reverse side
- White plastic case with push button to retract tape measure
- Length 72", Width 1/4"
- 6 per box

U/M: BX



### 72" Tape Measure

Item # 4417

- Durable linen-like fiberglass tape
- Graduated English Scale & Metric on reverse side
- Length 72", Width 1/4"
- 10 per package

U/M: PK



### Paper Tape Measure

- Graduated English Scale & Metric on reverse side
- 1000 per box

Item # 4412

36" Tape Measure

Item # 4413

24" Tape Measure

U/M: BX



### Finger Guards

- Plastic Finger guard protects fingers
- Full length to protect entire digit
- 12 per box

Item # 4406 S: Small

4406 M: Medium

4406 L: Large

4406-1: Assorted (3 of each size)

U/M: BX



### Nitrile Finger Cots

- Latex Free
- Powder Free
- Anti-Static
- 144 per box

Item # 4404 S: Small

4404 M: Medium

4404 L: Large

4404 XL: Extra Large

U/M: BX



### Reinforced Finger Cot

- Naturally white latex unrolled
- Lightly powdered
- 144 per box
- 9 mil thick latex
- Thick latex provides more durability

Item #	Size	Length	Width
4420 S	Small	2"	24 mm
4420 M	Medium	2 1/4"	28 mm
4420 L	Large	2 1/2"	30 mm
4420 XL	X-Large	2 1/2"	34.5 mm

U/M: BX



### Latex Finger Cots

- Natural white latex
- Lightly powdered
- 144 per box

Item # 4403 S: Small

4403 M: Medium

4403 L: Large

4403 XL: Extra Large

U/M: BX



**Table Paper Dispenser**

- Easily attached to the examination table
- Accommodates 18" or 21" paper rolls
- Includes; 2 stainless steel brackets & removable metal rods, instructions & 4 screws

**Item# 4060 Paper Dispenser w/Cutter**

**Item# 4061 Paper Dispenser Only**

U/M: EA



**Safety Pins**

- Nickel plated steel
- 10 gross per box

**Item # 4400 : Safety Pins # 1**

- 1" Long

**Item # 4401 : Safety Pins # 2**

- 1 1/2" Long

**Item # 4402 : Safety Pins # 3**

- 1 3/4" Long

U/M: BX



**Minute Minder**

**Item# 4450**

- 60 minute wind up timer
- White plastic housing with large black numbers
- Lays flat on desk or can be hung
- Size 3 3/4" x 3" x 2 1/4"

U/M: EA

**Digital Timers**

**Item # 4452**

- Counts Down and Up
- Pocket Size and has a spring loaded clip and magnet
- 1/2" Number display
- Size: 2 3/4 inch x 2 3/4 inch x 1/2 inch
- 1 AAA Battery included

U/M: EA



**Item # 4454**

- Features both a clock and timer
- Pocket Size and has a spring loaded clip and magnet
- Counts Down and Up
- Size: 2 3/4 inch x 2 inch x 1/2 inch
- 1 Battery included (LR44)

U/M: EA

**Ear Basin**

**Item# 4580**

- Polypropylene Plastic
- Specially molded to fit under patient ear

U/M: EA



**Hand Scrub Brush**

**Item # 4416**

- Long lasting nylon bristles provide thorough scrub without scratching
- Size 4 1/4" x 1 5/8"
- 12 per box

U/M: BX

**Nail Clippers**

**Item # 4491  
Fingernail Clipper**

**Item # 4492  
Toenail Clipper**

- Chrome plated steel with file
- 6 per box

U/M: BX



4491



4492



**Urgent Assist Bag**

**Item # 4331**

- Safe & Easy Disposal of fluids
- One Way Valve Prevents Leaking
- Latex Free
- 12 per package

U/M: PK



**Illuminated Eye Test Cabinet**

**Item # 3060**

- Metal cabinet with baked enamel finish
- Carry handle for portability
- Can be wall mounted
- 7 ft. power cord
- Includes 20 ft. Snellen, 20 ft. Illiterate, & 10 ft. Illiterate Eye Charts

**U/M: EA**

**Illuminated Eye Test Charts**

**Item # 3061: Snellen 20 ft.**

**Item #3062: Snellen 10 ft.**

**Item # 3063: Kindergarten 20 ft.**

**Item # 3064: Illiterate 20 ft.**

**Item # 3065: Illiterate 10 ft.**

- Size: 14" x 9"

**U/M: EA**



**Pocket Eye Test Chart**

**Item #3053**

- Use at 14"
- Provides 20/800 distance
- Size: 6 1/2" x 3 1/2"

**U/M: EA**



**Eye Occluder**

**Item # 3066**

- Shaped to cover either eye during an eye examination
- Constructed of black plastic

**U/M: EA**

**Plastic Eye Test Charts**

**Item # 3050: Snellen**

**Item # 3051: Illiterate**

**Item # 3052: Kindergarten**

- 20 ft. Test distance
- Size: 22" x 11"

**U/M: EA**



**Flat Eye Patch**

**Item # 4473**

- Elastic head band (Latex Free)
- Black sateen finish
- 12/Box

**U/M: BX**

**Convex Eye Patch**

**Item # 4475**

- Elastic head band (Latex Free)
- Black sateen finish
- 12/Box

**U/M: BX**



**Fox Aluminum Eye Shield**

**Item # 4476 Fox Aluminum Eye Shield without cover 12/Box**

**Item # 4476-1 Fox Aluminum Eye Shield with cover 50/Box**

**Item # 4476W Covers only for Eye Shield 50/Box**

- Malleable & Lightweight
- Perforated convex eye shield with slots

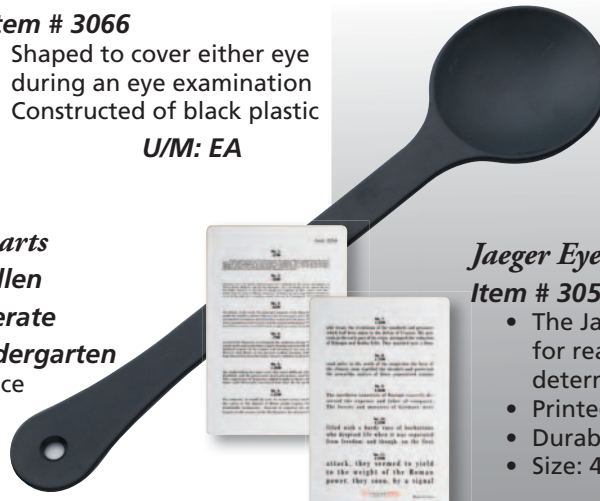
**U/M: BX**

**Jaeger Eye Chart**

**Item # 3054**

- The Jaeger eye chart is used for reading up close and for determining near vision
- Printed on both sides
- Durable, laminated plastic
- Size: 4 3/4" x 7"

**U/M: EA**

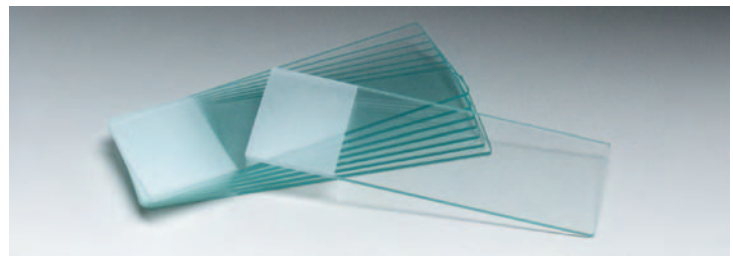


## Plain Slides

### Item # 9013

- 3" x 1" Plain Slides
- Ground Edges
- 1mm Thick
- Without Tissue Paper Interleaved
- 12 per box

U/M: BX



## Microscope Slides

### Item # 9010: Frosted Slides

### Item # 9011: Plain Slides

- Ground Edges
- Size 3" x 1"
- 1.0mm Thickness
- 2 Boxes of 72 slides

U/M: GR

## Premium Microscope Slides

### Item # 9019: Plain Frosted

### Item # 9020: Double Frosted

- Ground Edges
- 3" x 1"
- 1.0-1.2mm Thickness
- Without Tissue Paper Interleaved
- 2 Boxes of 72 slides

U/M: GR

## Cover Glass

### Item # 9021: .13mm Thickness (#1)

### Item # 9022: .17mm Thickness (#2)

- Size: 22mm x 22mm
- Contains 2oz (approx. 200 pcs)

U/M: EA



## Lens Paper

### Item # 9012

- 50 Sheets per book
- 12 books per package
- Used in cleaning the microscope eyepieces and lenses

U/M: PK



## Dropper Bottles

### Item # 9030: ½ oz.

### Item # 9031: 1 oz.

- Amber Glass
- Latex free
- 12 per box

U/M: BX

## Cytology Brush

### Item # 9035

- Effective in collecting specimens from the endo-cervical region
- Soft brush head measures 1 ½"
- 8" long
- 100 per bag/ 10 bags per box

U/M: BX

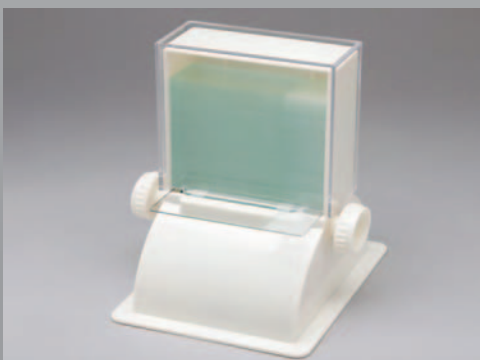


## Microscope Slide Dispenser

### Item # 9023

- Holds 72 standard slides
- Releases clean, dust free 3" x 1" slides
- Made from durable ABS plastic

U/M: EA



## Slide Storage Boxes

### Item # 9025: Holds 25 Slides

### Item # 9027: Holds 100 Slides

- Holds standard 3" x 1" slides
- Numbered index in lid
- Cork lined for added protection
- Made from durable ABS plastic

U/M: EA



**Latex Free Tourniquet  
(Perforated Reel)**

**Item # 4407-1**

- Packaged on reel of 25
- Powder free Nitrile
- Perforated every 18" for easy dispensing
- 1 reel per box

U/M: EA

**Latex Free Tourniquet**

- Powder free
- Blue synthetic rubber
- Size: 18" x 1"
- 10 per bag

**Item # 4408**

- 10 per bag

U/M: BG

**Item # 4408RB**

- Rolled and Banded
- 250 per bag
- 4 bags per box

U/M: BX



**Berman Airway Kit**

**Item # 8401KT**

- 8 Color Coded Sizes
- Sizes 40, 50, 60, 70, 80, 90, 100, and 110 mm
- Latex Free
- Disposable

U/M: EA



**Berman Airway Kit**

**Item # 8400KT**

- 6 Sizes in plastic case
- Sizes 50, 60, 80, 90, 100, and 110 mm

U/M: EA



**Berman Airways**

- Smooth, reinforced white polyethylene airways
- Single patient use
- Individually wrapped
- Available in 7 sizes
- 12 in each pack

**Item # 8400-12 #0: 40mm, Neonatal**

**Item # 8400-12 #1: 50mm, Infant**

**Item # 8400-12 #2: 60mm, Child**

**Item # 8400-12 #3: 80mm, Small Adult**

**Item # 8400-12 #4: 90mm, Med. Adult**

**Item # 8400-12 #5: 100mm, Lrg. Adult**

**Item # 8400-12 #6: 110mm, X-Lrg. Adult**

U/M: PK



**Latex Tourniquet**

**Item # 4409**

- Natural Latex
- Size: 18" x 1"
- Packaged flat
- 100 per box

U/M: BX

**"Quick Release" Tourniquet**

**Item # 4418**

- Universal Adjustments: will work with Child, Adult, and Thigh Size
- Latex Free
- 12 per box

U/M: BX



**Velcro Tourniquet**

- Pinch-less, Velcro-type Closure

**Adult Item # 4419**

- Size: 14" x 1"
- 12 per box

**Child Item # 4419C**

- Size: 10" x 1"
- 12 per box

**Thigh Item # 4419T**

- Size: 17" x 1"
- 12 per box

U/M: BX







**Guedel Airway Kit**

**Item # 8405KT**

- 6 Color Coded Sizes
- Sizes 50, 60, 70, 80, 90, and 100 mm
- Latex Free
- Disposable

**All Purpose Shear**

**Item # 8100**

- Easily cuts through the toughest materials
- 7 1/2" Shear with Stainless steel blade
- Autoclavable
- **Black**

**Other colors available:**

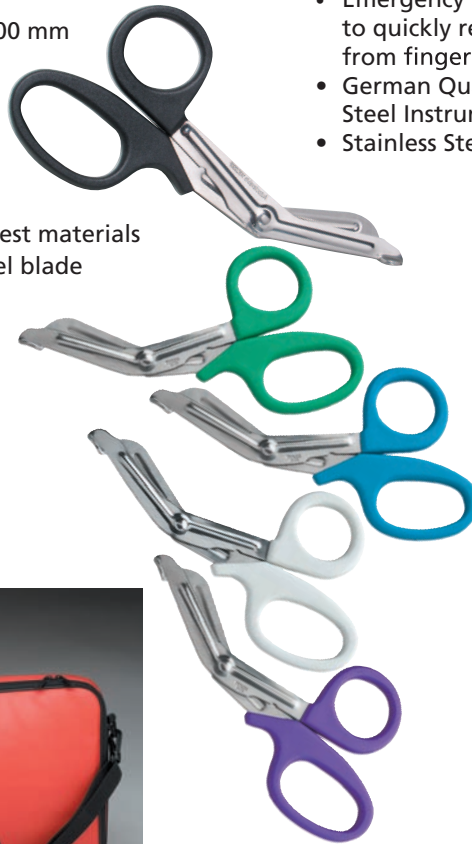
**Item # 8100 W - White**

**Item # 8100 BL - Blue**

**Item # 8100 GR - Green**

**Item # 8100 P - Purple**

**U/M: EA**



**Finger Ring Cutter**

**Item # 8120**

**Standard Ring Cutter**

- Emergency tool designed to quickly remove ring from finger
- Chrome plated handle with stainless steel blade

**U/M: EA**



**Deluxe Ring Cutter**

(Made in Germany)

**Item # 8122**

- Emergency tool designed to quickly remove ring from finger
- German Quality Stainless Steel Instrument
- Stainless Steel Blade

**U/M: EA**



**Window Punch**

**Item # 8140**

- Adjustable, Spring-loaded window punch
- Force is regulated by twisting rear cap
- Size: 5" x 5/8" diameter

**U/M: EA**



**Jaw Spreader**

**Item # 8190**

- Provides breathing relief for convulsive victims
- Individually packaged
- 10/bx

**U/M: BX**



**Fracture Kit**

**Item # 8000**

- Complete Splint System
- X-ray transparent
- In-line fiberglass support for transport and stabilization
- Waterproof nylon carrying bag



**Kit Contains:**

- Arm Splint, Adult & Child
- Leg Splint, Adult & Child
- Arm/Shoulder Immobilizer

**U/M: EA**

## Stainless Steelware

Tech-Med offers a full line of meticulously crafted satin finish stainless steelware, made of the highest grade stainless steel (18/8). Each item is crafted without seams which prevents bacteria growth and allows for easy cleaning, also they can be sterilized in an autoclave.



### Tumblers

**Item # 4242**

- Tumbler, 7 oz

**Item # 4242-1**

- Tumbler, 12 oz

U/M: 12/CS

### Graduated Medicine Cup

**Item # 4241**

- 2 oz

U/M: 12/CS



### Emesis Basin

**Item # 4230**

- 12 oz

**Item # 4231**

- 16 oz

**Item # 4232**

- 26 oz

U/M: 12/CS

## Instrument & Catheter Trays



**Item # 4254 Strap Handle**

- 8.5" x 3" x 1.5"

**Item # 4255 Strap Handle**

- 8.875" x 5" x 2"

**Item # 4258 Without Cover**

- 8.875" x 5" x 2"

**Item # 4259 Without Cover**

- 12.125" x 7.625" x 2.125"

**Item # 4256 Recessed Grip**

- 12.125" x 7.625" x 2.125"

**Item # 4257 Strap Handle**

- 17" x 4" x 1.125"

U/M: 6/CS

## Flat Trays

**Item # 4261**

- 13.625" x 9.750" x 0.625"

**Item # 4262**

- 15.125" x 10.500" x 0.625"

**Item # 4263**

- 17.125" x 11.625" x 0.625"

**Item # 4264**

- 19.125" x 12.500" x 0.625"

**Item # 4266**

- 21.5" x 16.750" x 0.500"

U/M: 12/CS





## Instrument Trays, Perforated Trays & Covers

### Item # 4270 Instrument Tray Only

- 12½" x 10¼" x 2½"

### Item # 4270P Instrument Tray Perforated

- for Item # 4270

### Item # 4271 Instrument Tray Only

- 12½" x 10¼" x 4"

### Item # 4271P Instrument Tray Perforated

- for item # 4271

### Item # 4272 Instrument Tray Cover

- for Item# 4270 & Item # 4271



### Item # 4273 Instrument Tray Only

- 12½" x 7" x 4"

### Item # 4273P Instrument Tray Perforated

- for Item # 4273

### Item # 4274 Instrument Tray Cover

- for Item# 4273

### Item # 4275 Instrument Tray Only

- 10¼" x 6¼" x 2½"

### Item # 4275P Instrument Tray Perforated

- for Item # 4275

### Item # 4276 Instrument Tray Only

- 10¼" x 6¼" x 4"

### Item # 4276P Instrument Tray Perforated

- for item # 4276

### Item # 4277 Instrument Tray Cover

- for Item# 4275 & Item # 4276

U/M: EA



### Pill Counting Tray

#### Item # 4280

- Designed for convenient time saving pill counting
- Stainless Steel Tray & Spatula
- Size: 8½" x 6" x 1¼"

U/M: EA

### Instrument Tray with Cover

Item # 4260 12" x 8" x 2½"

Item # 4265 12" x 3" x 2"

U/M: EA





**Dressing Jars**

- Item # 4233**  
Dressing Jar, 2 ¼ qt
- Item # 4233-1**  
Dressing Jar, 1 qt
- Item # 4233-2**  
Dressing Jar, ½ qt  
**U/M: 12/CS**



**Applicator Jar with Strap Handle**

- Item # 4237**  
28 oz  
**U/M: 6/CS**

**Ointment Jar**

- Item # 4238**  
8 oz  
**U/M: 12/CS**



**Sponge Bowl / Solution Bowl**

- Item # 4247**  
7 qt  
**U/M: 12/CS**

- Item # 4248**  
3/8 qt  
**U/M: 24/CS**

- Item # 4249**  
1 qt  
**U/M: 24/CS**

- Item # 4250**  
1 ½ qt  
**U/M: 30/CS**

- Item # 4251**  
1 7/8 qt  
**U/M: 24/CS**

**Iodine Cup**

- Item # 4239**  
6 oz  
**U/M: 24/CS**

- Item # 4240**  
14 oz  
**U/M: 12/CS**

**Wash Basin**

- Item # 4252**  
3 7/8 qt  
**U/M: 12/CS**



**Forceps & Thermometer Jar**

- Item # 4234**  
Forceps Jar, Small, 2" x 4 ½"  
**U/M: 12/CS**

- Item # 4235**  
Forceps Jar, Large, 2" x 7 ½"  
**U/M: 6/CS**

- Item # 4236**  
Thermometer Jar, Large, 1" x 4"  
**U/M: 12/CS**

**Bed Pans**

- Item # 4227**  
Bed Pan, Adult, 14" x 11 3/8"
- Item # 4229**  
Fracture Bed Pan
- Item # 4226**  
Male Urinal  
**U/M: 6/CS**



**Stainless Steelware is Shipped by the Case Pack**



**Aluminum Alloy Tuning Forks**

**Item # 7010**

- C128
- Fixed Weights

U/M: EA

**Item # 7011**

- C256
- Fixed Weights

U/M: EA

**Item # 7012**

- C512
- No Weights

U/M: EA



**Digital Thermometer**

**Item # 3210D**

- 10 Second read
- Easy to read large LCD display
- Reads both Centigrade and Fahrenheit
- Range 32° - 43.9° C, 90° - 109.9° F
- Alarm/Beeper when reading complete
- Battery Life: 200 hours of continuous operation
- Low Battery Indication
- Auto shut off after 9 minutes of non use
- Built in memory enabling display of the previously measured value

U/M: EA

**Taylor-Type Percussion Hammer**

**Item # 7014**

- Synthetic Rubber head in chrome plated handle
- 7 3/4" length
- Latex Free

U/M: EA



**Buck Neurological Hammer**

**Item # 7015**

- Chrome plated handle conceals screw-in brush
- 7 1/2" length
- Needle is included in the head

U/M: EA



**Thermometer Probe Covers**

**Item # 3211**

- Used for oral or rectal
- Non-Sterile
- Helps eliminate cross contamination
- 100 per box

U/M: BX

**Babinski Hammer**

**Item # 7016**

- 13" length

U/M: EA



**Babinski Hammer**

**Item # 7017**

- 9" length

U/M: EA

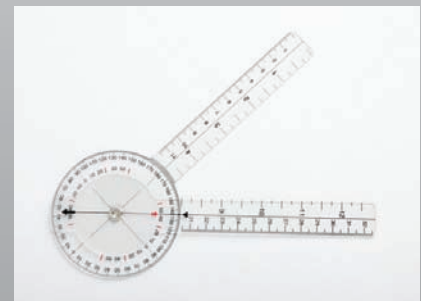


**Babinski Telescoping Hammer**

**Item # 7018**

- Chrome plated telescoping handle
- Adjusts from 6 1/2" to 15"
- Head may be used in both horizontal or vertical positions
- Latex free

U/M: EA



**Goniometers**

- 360° coverage in 1° increments
- Measurements in both inches and centimeters on both arms of the goniometer

**Item # 3469**

- 8 inch

U/M: EA

**Item # 3468**

- 12 inch

U/M: EA



**Wartenberg Pinwheel**

**Item # 7020**

- 7 1/2" length

U/M: EA

### Denture Cup

Item # 6360

- Secure storage for contents
- Patients information can be written clearly on top
- 3" x 3¼" x 2¼"

U/M: EA



### Shampoo Basin

Item # 4322

- Ideal for home or institutional use
- Designed to keep the head comfortably in place
- Inflatable heavy duty vinyl with two separate air chambers
- Includes 46" Drain hose
- Overall Dimensions: 20" x 24" x 8"

U/M: EA



### Inflatable Hair Rinse Tray

Item # 4321

- Ideal for home or institutional use
- Heavy Duty vinyl
- Size: 21" x 3"

U/M: EA



### Hair Rinsette

Item # 4320

- Ideal for home or institutional use
- Molded from durable styrene plastic
- Size: 29" x 15"

U/M: EA

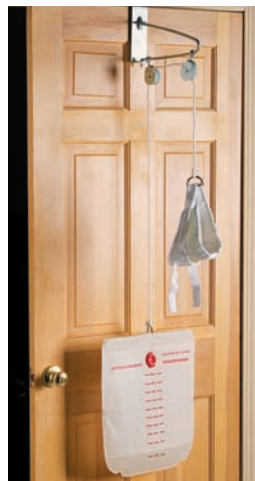


### Cervical Traction Set

Item # 6030: Over-Door

- Comfortable and easy-to-use in the home
- No tools required

U/M: EA



### Emery Board

Item # 4430

- 4½" Long
- 2 usable sides (Fine & Coarse)
- 144 per Box

U/M: BX



### Manicure Sticks

Item # 4435

- Smooth beveled wood
- Double Sided, Pointed and Angled ends
- 4½" Long
- 144 per Box

U/M: BX

### Tens Unit

Item # 6010

- Dual Channel (2 leads)
- 3 operating modes (constant, burst & modulating)
- Easy to use controls
- Includes carry case, 1 pair electrodes, 1 pair lead wires & 9 volt battery
- 3 year warranty

U/M: EA

### Tens Unit with Timer

Item # 6010-T

- same as the 6010 with the addition of an 30, 60 & 90 minute timer

U/M: EA





**Pill Crusher**

**Item # 6340**

- Simple twist mechanism crushes tablets
- Heavy duty plastic construction

U/M: EA



**Pill Cutter**

**Item # 6341**

- Stainless Steel Blade cuts pills neatly in half

U/M: EA



**Pill Organizer with Timer**

**Item # 6353**

- Very usefull for people who take pills at regular times
- Count down timer
- Time adjustment in Hours (99) and Minutes (60)
- Features 3 separate compartments
- Battery included (LR44)

U/M: EA



**3 in 1 Pill Cutter/Crusher**

**Item # 6343**

- Crushes tablets into a fine powder
- Splits tablets in two with stainless steel blade
- Provides two compartments for pill storage

U/M: EA



**Pill Puncher**

**Item # 6342**

- An easy way to remove pills from blister packs
- Place the pack in postiiion and close the lid the pill will fall into container beneath

U/M: EA



**Weekly Pill Box**

**Item # 6347**

- Convenient and portable way to organize every day medications
- Organizer lids are marked in Braille to assit the visually impaired
- Overall Dimensions: 6¾" x 1" x 1"

U/M: EA



**4365 Instrument Stand**

- Includes high grade stainless steel tray
- Mobile Base features locking casters
- Secure height adjustments 28" - 48"
- Tray Size: 12½" x 19"
- Base Width: 20"
- Weight Capacity 11 lbs.

U/M: EA



**4352 Mayo Stand, Single Post**

- Includes high grade stainless steel tray
- Base minimizes interference with other equipment
- Secure height adjustments 31" - 50"
- Tray Size: 12½" x 19"
- Base Width: 19", Depth: 22"
- Weight Capacity 11 lbs.

U/M: EA



**Replacement Tray, Stainless Steel**

<p><b>Item # 4264</b></p> <ul style="list-style-type: none"> <li>• 18/8 grade</li> <li>• 12½" x 19"</li> </ul>	<p><b>Item # 4266</b></p> <ul style="list-style-type: none"> <li>• 18/8 grade</li> <li>• 16¾" x 21½"</li> </ul>
--	---

U/M: EA



**4368 Mayo Stand, Double Post**

- Includes high grade stainless steel tray
- Base minimizes interference with other equipment
- Secure height adjustments 34" - 53"
- Tray Size: 12½" x 19"
- Base Width: 20", Depth: 19½"
- Weight Capacity 15 lbs.

U/M: EA



**4366 Mayo Stand, Double Post with Large Tray**

- Ideal for Urgent Care Facilities!
- Includes high grade stainless steel tray
- Base minimizes interference with other equipment
- Secure height adjustments 37" - 53"
- Tray Size: 16¾" x 21½"
- Base Width: 21", Depth: 25"
- Weight Capacity 50 lbs.

U/M: EA



## IV Stands



### Four Caster Base

#### Item # 4353: 2 Hook

- Highly polished chrome plated steel
- Adjusts from 47" to 84"
- Locking collar allows pole to be set at desired height
- Weight capacity is 15 lbs
- Diameter of base is 23"

U/M: EA

### Five Caster Base

#### Item # 4355: 2 Hook

#### Item # 4356: 4 Hook

- Highly polished chrome plated steel
- Adjusts from 47" to 84"
- Locking collar allows pole to be set at desired height
- Weight capacity is 22 lbs
- Diameter of base is 20"

U/M: EA



## Exam Lamps



### Examination Lamp, Standard

#### Item # 4397

- Chrome plated finish
- 12" Flexible gooseneck lamp
- Locking height adjustment from 34" - 72"
- 7' Power cord
- Uses 60 watt (or smaller) bulbs

U/M: EA



### Examination Lamp, Mobile Base

#### Item # 4398M

- Chrome plated finish
- 12" Flexible gooseneck lamp
- Locking height adjustment from 34" - 72"
- 7' Power cord
- Uses 60 watt (or smaller) bulbs
- Includes wire guard and heat shield to keep lamp cool
- Mobile Base

U/M: EA



### Examination Lamp, Deluxe

#### Item # 4398

- Chrome plated finish
- 12" Flexible gooseneck lamp
- Locking height adjustment from 34" - 72"
- 7' Power cord
- Uses 60 watt (or smaller) bulbs
- Includes wire guard and heat shield to keep lamp cool

U/M: EA



#### Item # 4399

- Replacement Base for 4397 & 4398

## Features and Benefits:

- One control knob allows you to raise and lower the arms and rotate left or right
- 7" wide arm allows for patient comfort and greater flexibility for the phlebotomist
- 2" padded seat and back offer the ultimate patient comfort
- Vinyl is mildew resistant, sulfide stain resistant and static dissipative
- Adjustable floor levelers allow the chair to sit solidly on an uneven floor
- Welded solid steel frame with a powder coated finish

## Upholstered Blood Drawing Chairs



**Tool Free Assembly  
Easy as 1 - 2 - 3!**



### Blood Drawing Chair, Standard Height

#### Item # 4382

- Straight Arm
- Seat Dimensions: 18" Width, 17" Depth, 19" Height
- Overall Dimensions: 34" Width, 28" Depth, 36" Height
- Height of Adj Arm 28"-35"
- 500 lb Weight Capacity

U/M: EA



### Blood Drawing Chair, Standard Height

#### Item # 4382-F

- Flip Up Arm
- Seat Dimensions: 18" Width, 17" Depth, 19" Height
- Overall Dimensions: 34" Width, 28" Depth, 36" Height
- Height of Adj Arm 28"-35"
- 500 lb Weight Capacity

U/M: EA



**Blood Drawing Chair, Tall**

**Item # 4383: Straight Arm**

**Item # 4383-F: Flip Arm**

- Seat Dimensions: 18" Width, 17" Depth, 24"Height
- Overall Dimensions: 34" Width, 28" Depth, 43"Height
- Height of Adj Arm 33"-40"
- 500 lb Weight Capacity

U/M: EA



**Blood Drawing Chair, X-wide**

**Item # 4382X-F**

- Flip Up Arm
- Seat Dimensions: 32" Width, 17" Depth, 19"Height
- Overall Dimensions: 43" Width, 28" Depth, 40"Height
- Height of Adj Arm 28"-35"
- 700 lb Weight Capacity

U/M: EA

**Tray and Drawer Assembly**

**Item # 4388**

- Attaches to the straight arm
- Straight arms are pre-drilled for easy installation
- Tray Dimensions: 8" wide x 11" deep
- Drawer Dimensions: 4" high x 11" wide x 11" deep

U/M: EA

**Can Be used with all Blood Drawing Chairs**



**Blood Drawing Chair, Standard Height**

**Item # 4381**

- Straight Arm
- Seat Dimensions: 18" Width, 16" Depth, 18"Height
- Overall Dimensions: 34" Width, 28" Depth, 32"Height
- Height of Adj Arm 28"-35"
- 300 lb Weight Capacity

U/M: EA



**Blood Drawing Chair, Standard Height**

**Item # 4381-F**

- Flip Up Arm
- Seat Dimensions: 18" Width, 16" Depth, 18"Height
- Overall Dimensions: 34" Width, 28" Depth, 32"Height
- Height of Adj Arm 28"-35"
- 300 lb Weight Capacity

U/M: EA

## *Features and Benefits:*

- Black leatherette double embossed upholstery
- Padded arms and legrests
- Fire retardant upholstery meets California code 117
- Die cast aluminum footrests
- Dual axle frame and adjustable front forks easily lower to a hemi height
- Folds for convenient storage

## Duro-Trac Wheelchairs



### *18" Wheelchairs - 250 lb Weight Capacity*

**WCDS1807P - Removable Desk Arm, Swingaway Detachable Footrest**

**WCDE1811P - Removable Desk Arm, Elevating Legrest**

**WCFS1803P - Perm Full Length Arm, Swingaway Detachable Footrest**

**WCDE1809P - Perm Full Length Arm, Elevating Legrest**

**WCFF1801P - Perm Full Length Arm, Fixed Footrests**

U/M: EA



### *20" Wheelchairs - 350 lb Weight Capacity*

**WCDS2007P - Removable Desk Arm, Swingaway Detachable Footrest**

**WCDE2011P - Removable Desk Arm, Elevating Legrest**

U/M: EA



### *22" & 24" Wheelchairs - 500 lb Weight Capacity*

**WCDS2207P - Removable Desk Arm, Swingaway Detachable Footrest**

**WCDE2211P - Removable Desk Arm, Elevating Legrest**

**WCDS2407P - Removable Desk Arm, Swingaway Detachable Footrest**

**WCDE2411P - Removable Desk Arm, Elevating Legrest**

U/M: EA



### 19" Steel Transport Chair

Item # TS1903

- 250 lb. weight capacity
- Detachable swing-away footrest
- Chrome plated carbon steel frame
- Seat belt included
- Weighs 26 lbs. (with footrest)
- Folds for convenient storage

U/M: EA



### 22" Steel Transport Chair

Item # TS2203

- 350 lb. weight capacity
- Detachable swing-away footrest
- Chrome plated carbon steel frame
- Seat belt included
- Weighs 35 lbs. (with footrest)
- Folds for convenient storage

U/M: EA

## Wheelchair Accessories

WCAS803



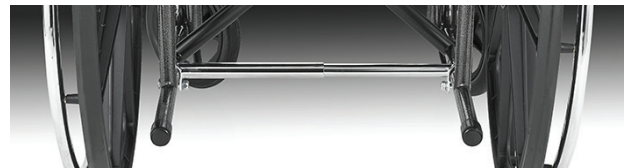
WCAS804



WCAS805



WCAS808



6400

- WCAS802 • Anti Tip Device for all wheelchairs
- WCAS803 • Oxygen tank holder for all wheelchairs
- WCAS804 • Telescoping IV Pole, 2 hook for all wheelchairs
- WCAS805 • Overhead Anti-Theft Device, for 18" wheelchairs
- WCAS808 • Anti-Theft Device, for 18" wheelchairs
- WCAS809 • Anti-Theft Device, for 20", 22", 24" wheelchairs
- 6400 • 3" Foam wheelchair cushion, 18" x 16" x 3"

## Adjustable Aluminum Cane

### Item # 6830-6

- Latex free hand grip
- Easy push button adjustment for height settings
- Height adjusts in 1" increments (29"-38")
- Sure lock secures handle at any height adjustment
- 6 per case

U/M: CS



## Aluminum Quad Cane

### Item # 6820-4: Small Base (5" x 7")

### Item # 6821-4: Large Base (7" x 11")

- Latex free hand grip made of soft hypalon
- Easy push button adjustment for height settings
- Height adjusts in 1" increments (29"-38")
- Sure lock secures handle at any height adjustment
- Chrome plated steel base
- 4 per case

U/M: CS



## Foot Stools, Standard



### Item # 4349: Chrome Plated with Handrail

### Item # 4351: Chrome Plated

### Item # 4351BLK: Black

- 11" x 14" Platform
- 10" x 13" non-skid rubber mat
- Handrail height is 34"
- 400 lb weight capacity

U/M: EA

## Foot Stools, Bariatric



### Item # 4348: Chrome Plated with Handrail

### Item # 4350: Chrome Plated

- 11" x 14" Platform
- 10" x 13" non-skid rubber mat
- Handrail height is 34"
- 700 lb weight capacity

U/M: EA

## *Notes:*

---



*a DUKAL company*



*1363-40 Veterans Memorial Highway  
Hauppauge, NY 11788  
[www.tech-medservices.com](http://www.tech-medservices.com)  
866-483-2463*