



### CAUTION

When assembling and moving your table, caution should be used to avoid injury to yourself, others around you, and your table. DO NOT lift or move without using proper safety procedures/equipment.

### You will need:

- Allen wrench
- 4 black allen head bolts

### Instructions:

1. Open the table box, your table will arrive with the legs folded down (Fig. 1)



Fig. 1

2. Raise the legs (Fig. 2) and position the angle brace with the holes directly over the 2 corresponding holes on the wood base. (Fig. 3)



Fig. 2

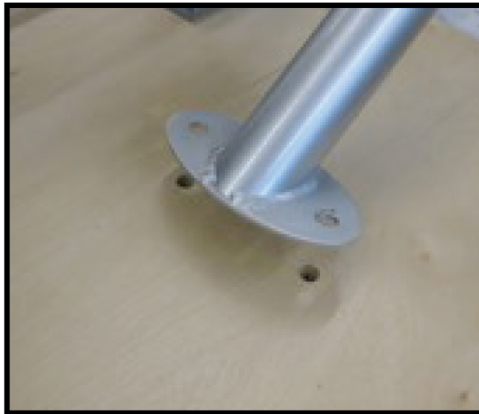


Fig. 3

3. Install 2 of the black allen head bolts provided with the table into the holes (Fig. 4) and make sure to fully tighten them (Fig. 5).



### CAUTION

DO NOT OVERTIGHTEN THESE BOLTS AS THE INTERNAL T-NUTS CAN STRIP OUT



Fig. 4



Fig. 5

4. Repeat Step 3 for the other side of the table.

5. The table should look like Fig. 6 when properly finished.



Fig. 6