

manipulation and dexterity tests

evaluation

Purdue® pegboard

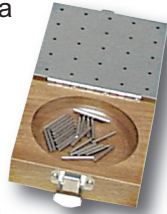
- measure gross movements of hands, fingers and arms; and finger-tip dexterity
- pins, collars, washers, examiner's manual and norms included



12-3000	Purdue pegboard	125.00
12-3001	extra parts* *25 collars, 45 washers, 55 pins	50.00
12-3002	record blanks (25)	12.50

Lafayette® pegboard

- measure a timed unilateral motor response
- subject places 25 pegs in round holes as quickly as possible across the rows
- scores should improve with successive trials



12-3005	Lafayette pegboard	120.00
---------	--------------------	--------

grooved pegboard

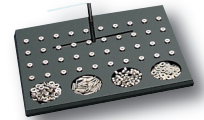
- manipulative dexterity test consisting of 25 holes with randomly positioned slots
- pegs with a "key" along one side must be rotated to match hole before inserted
- requires more complex visual-motor coordination



12-3010	grooved pegboard	95.00
12-3011	extra pegs (32)	50.00

Roeder manipulation

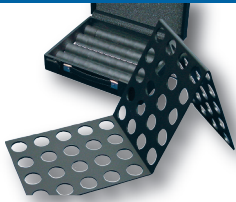
- measures hand, arm and finger dexterity and speed
- the test has two parts: sorting and assembling
- complete with instructional manual, norms and record blanks



12-3080	Roeder	225.00
12-3082	extra parts 25 collars, 45 washers, 55 pins	75.00
12-3081	record blanks (50)	12.50

Minnesota manual dexterity

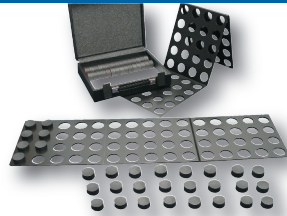
- manual dexterity test measures simple eye-hand-finger movement
- complete with carrying case, record blanks and norms



12-3050	MN Dexterity	250.00
12-3051	extra pegs, each	4.00
12-3052	record blanks (50)	12.50

complete Minnesota

- measures eye-hand coordination, speed and dexterity
- tests placing, turning, displacing, one-hand turning, and two hand turning and placing
- 2 folding boards, 60 blocks, carrying case and manual



12-3060	MN test	300.00
12-3051	extra pegs, each	4.00

work bench

- improve strength and endurance of shoulders, elbows, wrists and hands; fine motor coordination
- front allows bilateral work that duplicates a hidden, confined work area
- toolbox with 6" and 8" adjustable wrenches, 2 screwdrivers and 4 hex keys



10-1163	work bench	287.50
---------	------------	--------

prehension bench

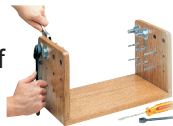
- graded resistance and prehension for both single-hand and bilateral activities
- 36 springs deliver resistance up to 21 lb
- different surface textures on the knob aid in decreasing hypersensitivity



10-1162	bench	310.00
---------	-------	--------

hand-tool dexterity test

- measures proficiency by using simple mechanic's tools
- consists of tools and two uprights with bolts
- disassemble all bolts from one upright and reassemble them on the other upright
- includes norms



10-1164	hand-tool	225.00
---------	-----------	--------

O'Conner Dexterity Tests

- finger test requires hand placement of three pins per hole
- use as a predictor for skills involving rapid manipulation of small objects
- tweezers test requires the placement of a single pin in a 1/16" diameter hole
- boards have 100 holes



finger



tweezer

finger dexterity test

12-3020	finger test	125.00
12-3031	extra pins (105)	32.50

tweezers dexterity test

12-3030	tweezer test	125.00
12-3031	extra pins (105)	32.50

Baseline® 9-hole peg board

- improve fine motor coordination and observe quality of movement and speed
- 14 pegs stored in two compartments within board
- square board 4-7/8"; pegs are 1 1/2"L x 1/4" dia



12-3141	9-hole peg board	30.00
---------	------------------	-------