



**Group B-401**  
Consists of: (L to R)  
(1) B-24-2D and  
(1) B-24

A variety of other base and wall cabinets are available. Call for information.

### Common Features

**PRO-LINE™ PROFESSIONAL CABINETS:**

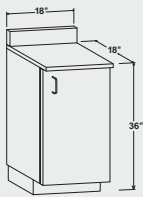
- A versatile line of modular all-laminate, dowel and glue cabinetry.
- Neutral color all-laminate interiors.
- All cupboards (except sink) have (1) adjustable laminate shelf.
- 4" Satin finish wire pulls.
- Self-closing laminate drawer slides with nylon rollers and positive stops.
- Doors have concealed, self-closing 110° 3-Way adjustable Euro-Hinges.
- All medical cabinets are "No Cancel / No Return."

**COLORS: (SEE COLOR CHART THIS PAGE)**

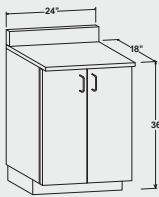
**Cabinet** – Folkstone Gray, Natural Oak or Wild Cherry laminate on all exposed surfaces including sides.

**Countertop** – Folkstone Gray square-edged top or choice of eight high pressure laminates.

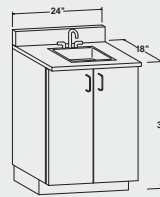
**BASE CABINETS – 36" H X 18" D (24" D AVAILABLE ON SPECIAL ORDER). PRICES INCLUDE COUNTERTOP.**



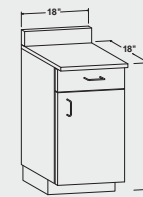
**B-18 (L or R)**  
(S sink is optional)  
18"W x 36"H x 18"D



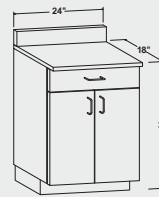
**B-24**  
24"W x 36"H x 18"D



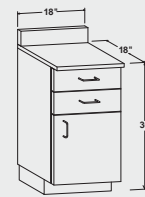
**BS-24**  
(includes S sink)  
24"W x 36"H x 18"D



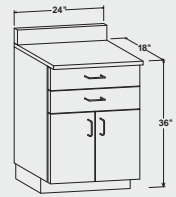
**B-18-1D (L or R)**  
18"W x 36"H x 18"D



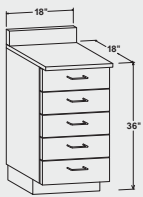
**B-24-1D**  
24"W x 36"H x 18"D



**B-18-2D (L or R)**  
18"W x 36"H x 18"D



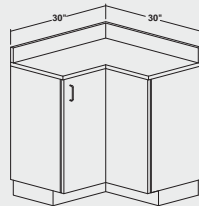
**B-24-2D**  
24"W x 36"H x 18"D



**B-18-5D**  
18"W x 36"H x 18"D

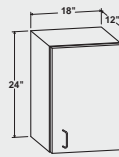


**B-24-5D**  
24"W x 36"H x 18"D

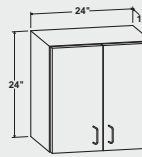


**BCC-30**  
(S sink is optional)  
30x30"W x 36"H x 18"D

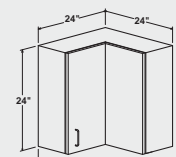
**WALL CABINETS – 24" H (30" H AVAILABLE)**



**W-18-24 (L or R)**  
18"W x 24"H x 12"D

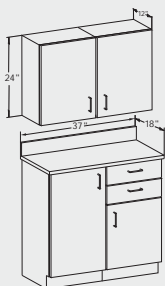


**W-24-24**  
24"W x 24"H x 12"D

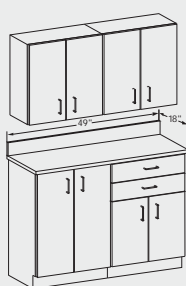


**WCC-24-24**  
24x24"W x 24"H x 12"D

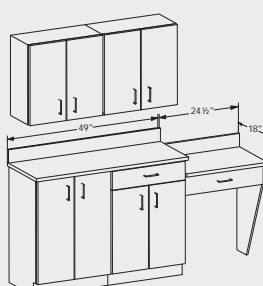
**TYPICAL CABINET GROUPINGS (AVAILABLE AS SHOWN OR OPPOSITE HAND)**



**GROUP B-402**



**GROUP B-403**



**GROUP B-404**

IF SINGLE DOOR CABINET, YOU MUST SPECIFY DOOR HINGE "R" (RIGHT SHOWN) OR "L" (LEFT). ALL COUNTERTOPS HAVE 1/2" OVERHANG EACH END. SEND SKETCH AND DIMENSIONS WITH ORDER.

**LAMINATE COUNTERTOP COLOR CHOICES**



346 OAK



5904 CHERRY



927 GRAY



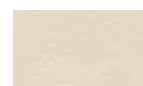
7909 MAPLE



909 BLACK



851 BLUE



920 ALMOND



966 BURGUNDY



D79 GREEN