

TC Series ENT Treatment Cabinets





**Specialized Equipment
for Speciality Healthcare**
Medical Technology Industries

Innovating to meet healthcare's biggest challenges

In the demanding world of specialty medicine, providing top-tier care requires equipment that simplifies and enhances your practice - while positively impacting patient outcomes and caregiver satisfaction.

MTI understands these challenges intimately. We've spent 25 years working hand in hand with medical professionals, listening to what truly matters in your practice. Our products are designed and manufactured in the USA, with the guidance of caregivers like you, ensuring they meet the unique demands of your specialty. Today, our equipment is trusted in hundreds of thousands of care visits every day, a testament to our commitment to quality and innovation.



TC Series Treatment Cabinets

The MTI TC series ENT cabinets are expertly crafted for busy otolaryngology practices, featuring latex-free materials and the ULPA 250 filter for enhanced safety, and user-friendly controls. Designed to accommodate various workspace flows, these cabinets boast multiple storage solutions with smooth, self-closing drawers for easy operation. Constructed from long-lasting, durable materials with easy-to-clean surfaces, the TC series ensures a seamless, efficient environment tailored to the demands of modern medical practitioners.

TC100A

The TC100A cabinet is MTI's five-drawer sit-down treatment cabinet. It is available in two cabinet depths; 18" Slim Line and 21" Standard.



TC100B

The TC100B cabinet is a stand-up version of the TC100A. The TC100B model adds an extra 7.5" drawer to provide extended height for those who prefer to stand during operation. It is available in two cabinet depths; 18" Slim Line and 21" Standard.



TC100C

The TC100C cabinet is a wider version of the TC100A. The extended width of the TC100C adds 10.5" of counter top space with a waste drop hole and a side mounted storage compartment, with one adjustable shelf and can house a waste receptacle. Optionally, the waste drop hole may be eliminated for additional bulk storage. It is available in a cabinet depth of 21".



TC100D

The largest of all treatment cabinets, the TC100D combines the larger work space and waste drop hole of the TC100C cabinet with the extended height of the TC100B for the ultimate in treatment cabinet size. The TC100D is standard with two adjustable shelves in the bulk storage compartment and can house a waste receptacle. Optionally, the waste drop hole may be eliminated for additional bulk storage. It is available in a cabinet depth of 21".



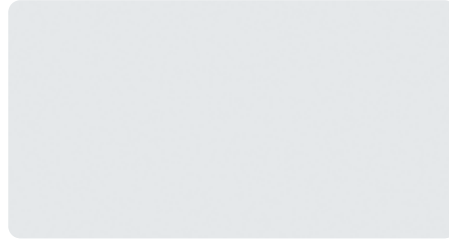
TC100 Treatment Cabinet Finishes

Handles



Brush Finished Satin Nickel

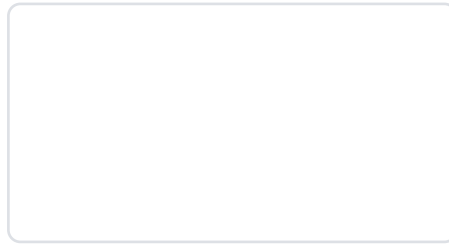
Counter Top Color Options¹



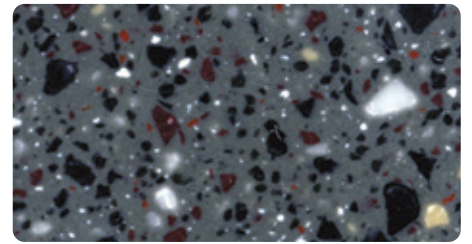
Crystal Laminate



Black Laminate

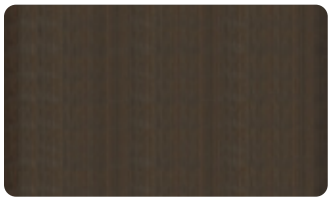


Frosty White Solid Surface²

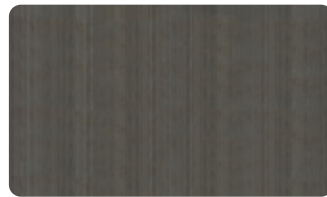


Midnight Melange Solid Surface²

Door and Drawer Front Standard Color Options¹



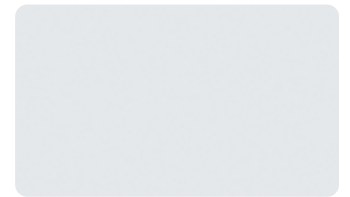
Xanadu³



Low Line³



Classic Linen



Crystal



Dove Grey



Shadow



Brittany Blue



Stainless Steel^{2,4}

¹ Due to printing processes, actual colors will vary.

² Additional upgrade charges apply.

³ Only available in Standard Depth cabinets. Includes cabinet sides and back wall.

⁴ Includes cabinet sides.

TC100 Treatment Cabinet Options

Dexterity



Left-Hand Hoses



Right-Hand Hoses

Pressure & Vacuum Systems

Flexibility to tailor the pressure and vacuum system to your clinical needs and your vacuum collection system's mounting locations to suite your workflow. All vacuum systems include the ULPA 250 in-line evacuation filter.



Internal pressure & vacuum system. Upgrade to high-volume vacuum to provide “wall-like” suction.

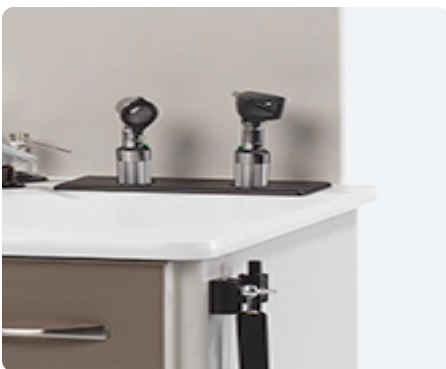
Internally mounted suction collection system or **externally** mount for rapid tube and canister replacement.



Central pressure & vacuum system connect rear of cabinet to your facility's central systems.

Optional vacuum unloading system quickly relieves vacuum pressure during rapid, repetitive use with small instrument tips.

Instrument Handles



Counter Top Recessed Handles and Charger



Side Mounted Handles and Charger



Side Mounted Corded Handles

TC100 Treatment Cabinet Options

Counter Top Configurations



One Application Bottle



Two Application Bottles



Three Application Bottles



Four Application Bottles



Three Application Bottles And
One Syringe

Back walls



4" Back wall



15" Back wall with Stainless Steel
Shelf



15" Back wall with Bottle/Canister
Tower



15" Back wall with Glove and Tissue
Dispensers



15" Back wall Medicine Lock Box with Adjustable Shelf

TC100 Treatment Cabinet Options

Mirror Warmers



Counter Top Recessed Glass Bead Mirror Warmer



Back wall Mounted Glass Bead Mirror Warmer (right side only)



Mirror Warming Drawer

Additional Options



Lift-Up Shelf (12x12" or 12x18")



Lock one drawer or one door



Locks all drawers except one of either top drawers



Dirty Instrument Tray



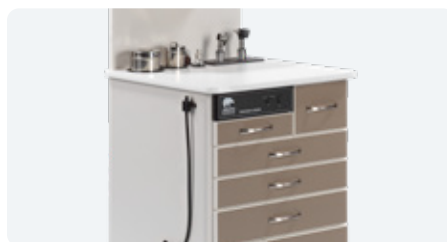
Foot Control with Pressure and Vacuum Operation



Endoscope Cold Storage Tubes (Multiple sizes and mountings)



4-Port LED Light Source



Dual Suction Hoses Provides Access to Suction on Both Sides of the Cabinet



TC75 Treatment Cabinet



The TC75 cabinet is ideal for satellite offices or those physicians who do not need handles and instruments, canisters, and bottles, but still need a quality cabinet with a suction and pressure systems.

Standard Features

- Crystal laminate color
- Choice of Standard 21" depth or Slim Line 18" depth models and 4" back wall
- Latex safe (latex-free)
- Right or left hand hose dexterity
- Industrial rated pressure and vacuum system
- ULPA 250 In-line evacuation filter
- Control panel with easy to use single switch vacuum/pressure operation and auxiliary switch control
- Five drawers, one with adjustable dividers and two with molded inserts. All drawers have a self closure feature and drawer fronts use rugged 3 mm molded edge banding for cleanliness and durability.
- Side panels offer style and functional safety as well as noise attenuation
- Concealed heavy-duty door hinges
- Dual accessory electrical outlets located inside cabinet
- Total component modularity with plug and play components aid in easy component replacement/repair

Optional Features

- Configure your counter top with two 3×6" stainless steel canisters or one 4×5" and one 3×6" stainless steel canisters.
- Configure your counter top with up to four small application bottles or up to three small application bottles and one syringe.
- Dual rechargeable instrument wells or transformer with corded handles
- Choice of two instrument heads

Treatment Cabinet Comparison



Model	TC75	TC100A	TC100B	TC100C	TC100D
Page	Pg. 10	Pg. 4	Pg. 4	Pg. 5	Pg. 5
Style	Sit-Down	Sit-Down	Stand-Up	Sit-Down	Stand-Up
Height	33"	33.5"	41.5"	33.5"	41.5"
Depth Options	18" or 21"	18" or 21"	18" or 21"	21"	21"
Drawers	5	5	6	5	6
Doors	2	2	2	3	3
Width	25"	25"	25"	35.5"	35.5"
Canister Options	3×5" and 4×5"	3×5" and 4×5"	3×5" and 4×5"	3×5" and 4×5"	3×5" and 4×5"
Back Wall Options	15" or 4"	15" or 4"	15" or 4"	15" or 4"	15" or 4"
Glassware Options	Up to 4 – Atomizer, Powder Blower, Syringe, and Others				
Pressure Systems	Internal Pressure	Internal Pressure Central Pressure	Internal Pressure Central Pressure	Internal Pressure Central Pressure	Internal Pressure Central Pressure
Vacuum Systems	Standard Internal High Volume Internal	Standard Internal High Volume Internal Central Vacuum	Standard Internal High Volume Internal Central Vacuum	Standard Internal High Volume Internal Central Vacuum	Standard Internal High Volume Internal Central Vacuum
Suction Canister Location	Internal	Internal or External (Factory or Field Installed)	Internal or External (Factory or Field Installed)	Internal or External (Factory or Field Installed)	Internal or External (Factory or Field Installed)
In-line Evacuation Filter	MTI ULPA 250 Filter Captures 99.999% of airborne contaminants Replace 4 to 6 times less often than competitive filters				
Instrument Handle Options	Counter Top Recessed, Side Mounted Cordless, Side Mounted Coded				
Instrument Options	Diagnostic, Pneumatic, Operating, and Macroview Oscopes, Transilluminators, Insufflator Bulbs				
Finish Options	Crystal Laminate	Laminate or Stainless Steel	Laminate or Stainless Steel	Laminate or Stainless Steel	Laminate or Stainless Steel
Counter Top Options	Crystal Laminate	Laminate Solid Surface	Laminate Solid Surface	Laminate Solid Surface	Laminate Solid Surface
Hose Location Options	Left or Right Hand				
Waste Drop	No	No	No	Yes	Yes

Discover MTI's Full Family of Products

MTI is dedicated to crafting high-quality procedure and exam chairs, cabinets, and accessories for a variety of medical and dental specialties. Explore how our equipment can enhance and modernize the care experience for both patients and practitioners.



Exam/Procedure Chairs and Surgery Chairs

MTI manufactures a variety of ENT examination/procedure and surgery chairs. The epitome of innovation, comfort, and durability. Crafted with a luxurious design that combines soft, sleek aesthetics with superior patient access, these chairs set a new standard in performance and patient care.



Stools

Our 300 Series offers a versatile range of stools to meet the demands of any office. Whether you need pneumatic, hydraulic, hand-operated, or foot-operated options, you'll find the perfect fit for your workflow.



Side and Guest Chairs

Designed to seamlessly complement your waiting and exam rooms, our chairs can be upholstered to match your existing MTI products.

MTI, Inc.

3655 W. Ninigret Drive • Salt Lake City, Utah, 84104-6572
Phone: 800-924-4655 • 801-875-4999 • Fax 801-952-0548
www.mti.net



**Specialized Equipment
for Speciality Healthcare**
Medical Technology Industries

© MTI All rights reserved. MTI reserves the right to make any product changes without notice. The MTI brand and Bear logo design are U.S. registered trademarks of MTI, Inc.