

## Set Language

Select **Language** and press **ENTER** to cycle through the available display languages, leaving the selection on the chosen language.

Analyzer Configuration		↺
Printer Setup		
Sound :	On	No
Barcode reader :	On	No
Language :	English	
Date/Time :		
Auto Number Reset :	Yes	No
→ Exit	Press ENTER to change	

## Barcode Reader (Optional)

If no Barcode Reader is present, leave this selection at **No**. If Barcode reader is present, set this setting to **Yes**. Refer to the detailed instructions in the Instruction Manual for installing and configuring the optional Barcode reader.

## Sound

Select **Sound** and press **ENTER** to cycle through the audio options. Leave this setting at **On** for all audio prompts and indications.

## Printer Setup

Select **Printer Setup** and press **ENTER** to show the Printer Setup screen. Select **Printer Setup** and press **ENTER** to cycle through **Internal** or **External** options. Leave at **Internal** to use the internal printer.

Select **Auto-Print** and press **ENTER** to cycle through **Auto-Print Off** or **On**. Leave at **On** to automatically print all results.

Select **Print Copies** and press **ENTER** to select the number of copies to print, from 1 to 3.

Select **Exit** and press **ENTER** to exit this screen.

Select **Exit** and press **ENTER** to return to the Menu screen.

This completes analyzer setup functions. Select **Exit** and press **ENTER** to return to the Initial Screen.

Printer Setup		↺
Select Printer:	Internal	External
Print Darkness:	5	Normal
Printer Mode:	Normal	
Auto-Print:	On	Off
Print Copies:	1	
→ Exit	Press ENTER to change	

Pro Advantage Urine Analyzer	
Analyzer is self testing Please wait a moment	
2012 NDC, Inc. All rights reserved	

## Begin Testing

## For Operation:

Press the **START** key to extend the Strip Holder and show the testing menu screen.

Scan or Enter Canister Code		↺
Code:		
Press CANCEL to exit		

Scan using barcode reader or manually enter the canister code from the canister. If the canister code is correct, the analyzer will display the initial screen.

Note: QC and User Lockout functions are available. Refer to the Instruction Manual for details.

Press **START** again to show the testing screen. A timer will show in the lower right of the screen, beginning at 65 seconds. Dip a new strip into the urine sample to be tested. Drain excess sample from the strip and place it on the Strip Holder when the timer reaches 62.

No. 000001	10U	↺
Mode: Routine		
Place a strip on the Holder		
Press ENTER to change Mode		
START to test		
CANCEL to exit		

A triple beep will be heard. The test strip will remain on the strip carrier until it is moved into the analyzer. The strip pads are read and the results displayed. The Strip Holder returns the strip to the extended position. The strip can then be removed and a new sample analyzed.

No. 000001	10U	↺
Mode: Routine		
Testing ...		
Press CANCEL to exit		

Refer to the Instruction Manual for more advanced processing and settings.

## Printed Results

Arbitrary units will always be printed. Either Conventional or SI unit results will also be printed depending on the unit setting.

Patient ID	ID: 0058164578		
Date/Time	Date: 2008-07-15 16:54		
Operator ID	Operator: 01		
Test Number	No. 000011		
Test Parameters	LEU	-	neg
	MIT	-	neg
	URO	-	0.2 mg/dL
	PRO	-	neg
	pH	-	5.5
	BLO	-	neg
	SG	1.030	neg
Abnormal Results	KET	±	5 mg/dL
	BIL	-	neg
	GLU	+	250 mg/dL

## CLIA Waived Information

The Pro Advantage® Urine Analyzer is CLIA waived when used with strips of the same brand as the analyzer. Only laboratories with a Certificate of CLIA Waiver may use this analyzer in a waived setting. Users should read this complete test procedure before performing a test using this analyzer. Failure to adhere to these instructions for use and for performing QC testing is considered off-label use. Off-label use is categorized as high complexity and subject to all CLIA regulations.

## Service and Support

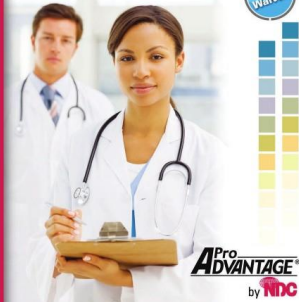
For technical support or other customer services, please contact 1-(800)-838-9502.



CLIA Category: **WAIVED**  
Made in China for NDC, Inc.  
407 New Sanford Road, La Verne, TN 37086  
www.ProAdvantagebyNDC.com

EN 116827801  
©NDC, Inc. 2012-04-09

## Urine Analyzer



Pro Advantage  
by NDC

## Quick Start Guide

Place the analyzer on a level surface. Allow 80 x 50 cm on all sides of the analyzer for access.

Plug the power cord into a power outlet, then press the power switch located on the back panel of the analyzer to turn on. The Analyzer will run a self-test. With no strip holder installed, the self test will fail indicating "Optical Sensor Failed". The Strip Holder Mount will be extended. Turn the analyzer power off.

## Install Printer Paper

Pull up on the finger pull area marked to open the Printer Cover. Place paper roll in the printer box. The paper comes from the bottom of the roll up into the printer.

A green Paper Release Lever is located near the Printer Roller. Press the back end of the Paper Release Lever towards the front of the analyzer to release the pressure on the Printer Roller. Feed the paper under the Printer Roller until the end shows above the roller.

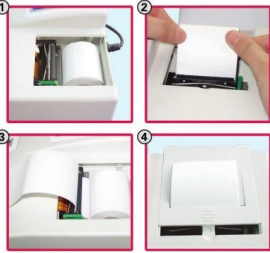
Pull the paper up.

Leave 10 cm (4 inches) of extra paper above the Printer Roller.

Press the front of the green Paper Release Lever down to lock the Printer Roller.

Thread the excess paper through the Printer Paper Access slot in the Printer Cover.

Return the Printer Cover to its original closed position.



## Install Strip Holder

Remove the plastic packaging from the provided Strip Holder. Place the Strip Holder on the Strip Holder Mount with the white calibration circle positioned towards the back of the analyzer such that it slides loosely in the locating channel.

Push the Strip Holder in towards the analyzer until it snaps into place and is held firmly on the Strip Holder Mount.



## Power up Analyzer

Turn the Power Switch on. The Self-Test will be run again with Strip Holder Mount retracted. The Initial Screen will be displayed. Press **MENU** to show the Menu screen to configure the analyzer.

Pro Advantage Urine Analyzer	01-10-10	↺
Analyzer is self testing Please wait a moment		
2012 NDC, Inc. All rights reserved		
Press MENU or START Press Enter for ID Admin		

## Configure Analyzer

Select options by pressing **▲** or **▼** until the Selection Arrow (**→**) is next to the option. Press **Enter** to show the options in a new screen or cycle through the settings as listed below. Select **Exit** and press **ENTER** to change to the Initial Screen.

MENU	
Test Settings	↺
Analyzer Configuration	
Database	
Self Test	
QC Test	
→ Exit	
Press ENTER to change	

## Select Type of Strip

Select **Type of Strip** and press **ENTER** to change the strip type. Each strip type defines the number of test parameters per strip, in this case 10 parameters. Each press of the **ENTER** key cycles through all options. Press **ENTER** until **Type of Strip** matches the strips to be used.

Test Settings		↺
Type of Strip	10U	STAT
Test Number	100001	
Continuous Test	On	Off
Units	SI	
→ Exit	Press ENTER to change	

## Select Mode

Select **Mode** and press **ENTER** to change the Mode to **Normal**.

## Select Continuous Test Mode

Select **Continuous Test** and press **ENTER** until **Off** is displayed for **Single Test**.

## Select Units

Select **Units** and press **ENTER** to select either **Conventional** or **SI** units. Select **Exit** and press **ENTER**. Select **Analyzer Configuration** and press **ENTER**.

Analyzer Configuration		↺
Printer Setup		
Sound :	On	No
Barcode reader :	No	Yes
Language :	English	
Date/Time :		
Auto Number Reset :	Yes	No
→ Exit	Press ENTER to change	

## Set Date/Time

Select **Date/Time** to show the Date/Time menu. Selecting **Date Format** and **Time Format** then pressing **ENTER** will cycle these selections through the available options. Select the proper format.

Date/Time	07-15-08	↺
	11:04 am	
Date Format:	MM - DD -YY	
Time Format:	12 Hour	
Set Date and Time		
→ Exit	Press ENTER to change	

Select **Set Date and Time** and press **ENTER**. Follow on-screen directions to set the current time and date. Press **ENTER** to accept the changes and exit the screen. Press **ENTER** again to exit the Date/Time menu.

Date/Time	07-15-08	↺
	11:04 am	
▲ ▼ to change ◀ ▶ to move		
Press ENTER to accept CANCEL to exit		

## Urinalysis

## Report Form

Patient Name: \_\_\_\_\_

Age: \_\_\_\_\_  Male  Female

Physician's Name: \_\_\_\_\_

Collection Date: \_\_\_\_\_ Test Date: \_\_\_\_\_ Tester's Initials: \_\_\_\_\_

**Physical Characteristics:**Color:  Colorless  Yellow  Amber  Orange  
 Green  Red  OtherAppearance:  Clear  Hazy  Cloudy  Turbid**Chemical Measurements:** (circle one)

<b>Urobilinogen (mg/dL)</b>	Normal	2	4	8		
<b>Glucose (mg/dL)</b>	Negative	50	100	250	500	1000
<b>Ketone (mg/dL)</b>	Negative	trace/5	+/15	+/40	+/80	+/160
<b>Bilirubin</b>	Negative		+	++	+++	
<b>Protein (mg/dL)</b>	Negative	trace		+/30	+/100	+/300 ++/2000
<b>Nitrite</b>	Negative	Positive (any pink color is considered positive)				
<b>Leukocytes</b>	Negative	trace	+	++	+++	
<b>Blood</b>	Negative	trace	mod	trace	+/small	+/mod ++/large
		Non-Hemolyzed		Hemolyzed		
<b>pH</b>	5	6	6.5	7	8	9
<b>Specific Gravity</b>	1.000	1.005	1.010	1.015	1.020	1.025 1.030

**Microscope Examination:**

WBC \_\_\_\_\_/HPF Crystals \_\_\_\_\_ Spermatozoa \_\_\_\_\_

RBC \_\_\_\_\_/HPF Bacteria \_\_\_\_\_ Artifacts \_\_\_\_\_

Casts \_\_\_\_\_/LPF Yeast \_\_\_\_\_ Other \_\_\_\_\_

Epithelial Cells \_\_\_\_\_/HPF Parasites \_\_\_\_\_

**Comments:**


---



---



---



---