



PAIN MANAGEMENT POSITIONING
with the **Spine Positioning System II**

SPINE POSITIONING SYSTEM II

New & Improved!

- **Optimal Imaging**
High radiolucency and flexibility for ideal cervical, thoracic and lumbar visualization.
- **Enhanced Patient Comfort**
Minimize unwanted movement and reduce procedure time.
- **Easy Set-ups**
New simplified system of pads minimize the complexity of set-up.
- **Stable Design**
New, larger contoured torso pad cradles patient & the strap securely fastens the system to the table.



RADIOLUCENT FRAME

Used to support the Torso support and Crescent face rest pad. One cam lock facilitates cervical flexion and extension.



Adequate free space under see through face section for aeration, supplemental O2, jaw/face contact as necessary; prevents patient overheating, can more easily communicate with the patient without sound muffling.

STABILIZING STRAP

New strap system secures SPS II to the table.



PRODUCT SPECS

WEIGHT	16 lbs (7kg)
FRAME WITH FACE REST	12" x 32.5" (30 x 84cm)
CRESCENT FACE PAD	12" (30cm) diameter
CONTOURED TORSO SUPPORT PAD	6.5" x 23" x 30" (17 x 58 x 76cm)
CONTOURED TORSO WEDGE	2" x 22" x 29" (5 x 56 x 74cm)
LARGE ADJUSTER PAD	8" x 22" x 2" (20 x 56 x 5cm)
SMALL ADJUSTER PAD	7" x 12" x 1.5" (18 x 30 x 4cm)
8" SEMI-ROUND BOLSTER	6" x 8" x 26" (15 x 20 x 66cm)
FRAME	RADIOLUCENT FRAME
WARRANTY	Frame, Fabric and Padding - 2 years
REGULATORY	FDA listed, CE marked

FDA listed to regulation #892.1830 – Class I; CE marked – to CE Declaration of Conformity to Annex I of the EC Directives 90/385/EEC and 93/42EEC.

SPS II available through select dealers only. Please contact us for a complete list.

The Spine Positioning System II (SPS II) is an integral component of the pain management fluoroscopy suite. With this system, procedural set up time is reduced, patient comfort is enhanced, and unwanted movement is minimized. Most importantly, the target anatomy is more readily visualized, which allows the physician to perform spine procedures in a more efficient and secure manner.

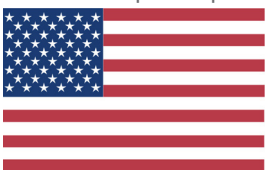
OAKWORKS® designed the SPS II in an effort to achieve the critical balance between optimal imaging and patient comfort. The radiolucent adjustable frame and versatile padding system provide a metal-free imaging support platform capable of quickly positioning a wide variety of patient physiques. The adjustable face rest position provides individualized positioning for all types of cervical procedures and anatomy. The contoured torso support pad is complimented by a host of uniquely shaped and sized adjuster pads and wedges that enable a multitude of positioning combinations for ideal patient comfort and imaging needs for all spinal column procedures.

The SPS II was designed with the input of experienced interventional spine physicians under the direction of Paul Dreyfuss, MD. An extensive trial period was undertaken such that various modifications were made to accommodate the precise needs of the interventional pain physician and their patients.

PRIMARY ADVANTAGES OF THE SPINE POSITIONING SYSTEM II:

- No metal (radiopaque) components are present under the spine- unobstructed visibility of the entire spine from C0-C1 to the coccyx with all imaging angles (AP, oblique and lateral). All radiopaque components are placed proximal to the forehead.
- Adjustment easily made to maximize opening and imaging of the cervico-thoracic junction.
- Secure and easy to use single locking face rest mechanism to adjust cervical flexion, extension and height.
- Torso pad elevation under the chest allows for the shoulders to drop out of the plane of imaging when obtaining a lower cervical and upper thoracic lateral and oblique views.
- Adequate free space under open air face section for aeration, supplemental O2, jaw/face contact as necessary; prevents patient overheating and easy communication with the patient without sound muffling.
- Contoured torso support allows the shoulders to drop yet be adducted/slightly extended next to the body for comfort where they are also less likely to lose position/fall off the fluoroscopic table.
- Current design obviates the need to pull the arms back to the side to obtain imaging of the cervico-thoracic junction; the more comfortable adducted and slightly extended position suffices.
- Adequate adjuster pads to maximize torso build up for larger frame patients.
- Not only for cervical cases; also useful for thoracic and lumbar cases.
- Comfortable for patients with cervical pain when longer duration thoracic and lumbar cases are performed.
- Softer foam under the breasts and shoulders for comfort; firmer central foam for enhanced stability.
- Wider and longer torso pad gives extra support resulting in less sway and improved patient comfort.
- Torso pad restraint strap secures the pad to the table; more stability when mounting and dismounting the system.
- Torso pad with abdominal recess for extra comfort and support.
- All prone positioning needs met with the SPS II; no need for additional pillows.
- Very firm adjuster wedge and pads prevent undue compression and loss of the original position.

made in the USA
with US & imported parts



OAKWORKS®
MEDICAL

THE FOLLOWING SCENARIOS IN FACTITIOUS PATIENTS WILL DEMONSTRATE:

- Various body types using the Spine Positioning System II
- Their positioning and specific configurations of the SPS II used in particular clinical situations
- Various fluoroscopic images of these factitious patients that exemplify the value of the SPS II

PATIENT - LIZ

COMPONENTS USED: Platform Frame, Crescent Face Rest Pad, Contoured Torso Support Pad, Contoured Torso Wedge, 8" Semi-Round Bolster (not pictured)



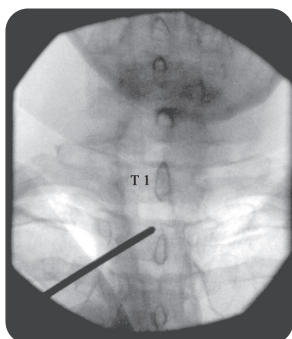
SPS II set up for Liz shown here



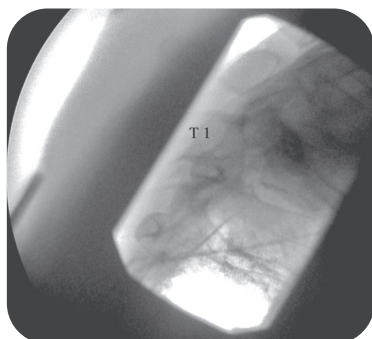
Liz in the SPS II while obtaining an AP image of the upper thoracic spine.



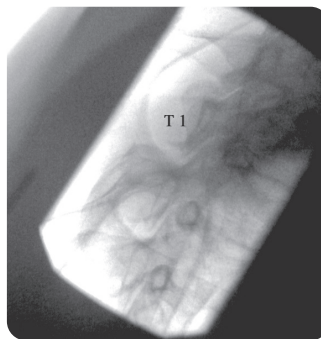
Liz in the SPS II while obtaining a lateral image of the upper thoracic spine.



AP image visualizing the T1-2 interlaminar space.



Lateral image primarily through the C7—T2 segments.



Contralateral oblique showing the upper thoracic facet joints.



SPINE POSITIONING SYSTEM II

PATIENT - CARL

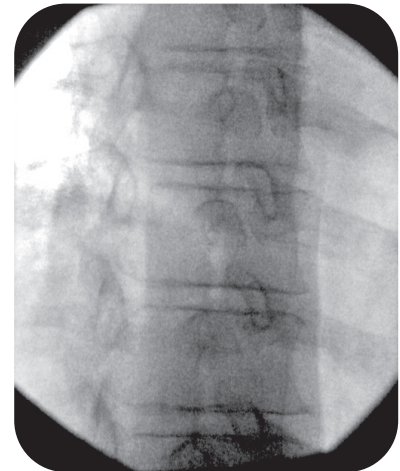
COMPONENTS USED: Platform Frame, Crescent Face Rest Pad, Contoured Torso Support Pad, Contoured Torso Wedge, 8" Semi-Round Bolster (not pictured)



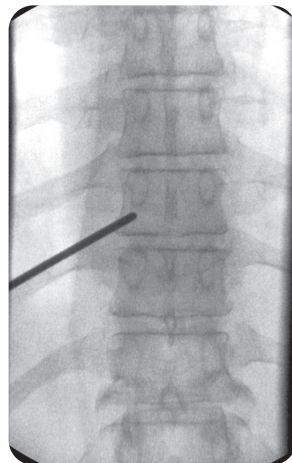
SPS II set up for Carl shown here



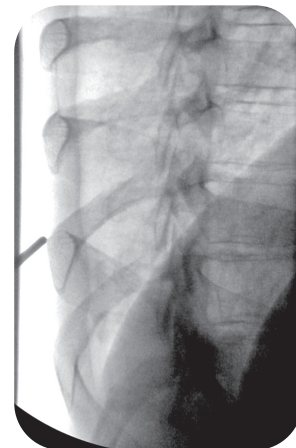
Carl in the SPS II while obtaining an AP image of the mid-thoracic spine



Right thoracic oblique image to visualize the trajectory for a transforaminal injection



AP image of the mid-thoracic spine for planning the trajectory for a left thoracic facet injection



Contralateral oblique showing the trajectory for targeting the mid-thoracic facet joint



SPINE POSITIONING SYSTEM II

PATIENT - JANE

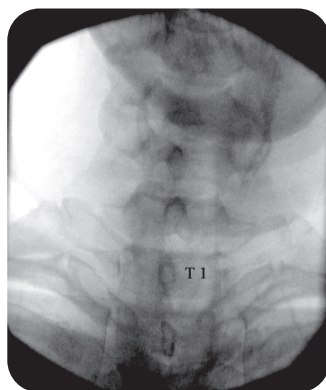
COMPONENTS USED: Platform Frame, Crescent Face Rest Pad, Contoured Torso Support Pad, Contoured Torso Wedge, 8" Semi-Round Bolster (not pictured)



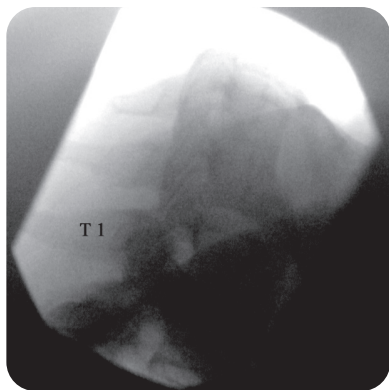
SPS II set up for Jane shown here



Jane in the SPS II while obtaining a lateral image of the cervical spine.



The lower cervical interlaminar spaces are seen without visualization of the mandible over the target interspaces



Lateral collimated image of the cervical spine. The C6-7-T1 interspaces are appreciated for all posterior approach cervical procedures such as interlaminar epidural steroid injections, facet injections, medial branch blocks and medial branch radiofrequency neurotomy.



SPINE POSITIONING SYSTEM II

PATIENT - ALICIA

COMPONENTS USED: Platform Frame, Crescent Face Rest Pad, Contoured Torso Support Pad, Contoured Torso Wedge, 7" x 12" Rectangular Adjuster Pad, 8" Semi-Round Bolster (not pictured)



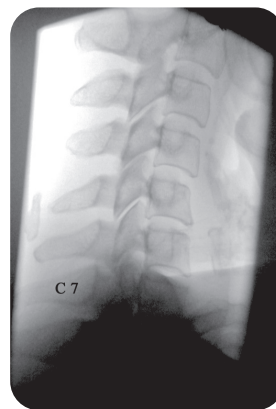
SPS II set up for Alicia shown here



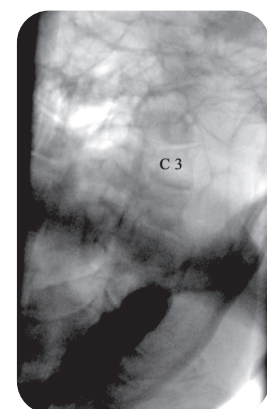
Alicia in the SPS II while obtaining a C3 pillar view



Demonstrates the generous amount of space under the head/face while laying comfortably in the SPS II



Lateral view of the cervical spine. The C2-3 to C7-T1 interspaces are easily visualized for all posterior approach cervical procedures.



Right C3 and C4 pillar view of Alicia. The target articular pillars are visualized for posterior approach facet/medial branch procedures.



SPINE POSITIONING SYSTEM II

PATIENT - DON

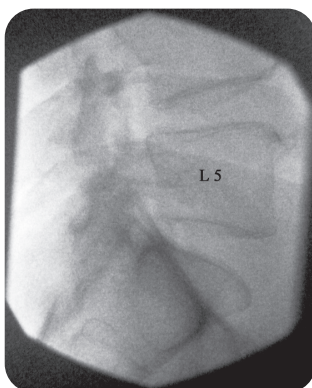
COMPONENTS USED: Platform Frame, Crescent Face Rest Pad, Contoured Torso Support Pad, 8" x 22" Rectangular Adjuster Pad, 8" Semi-Round Bolster (not pictured)



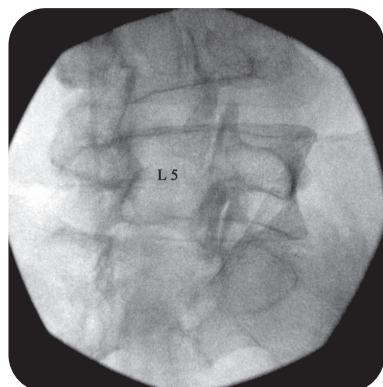
SPS II set up for Don shown here



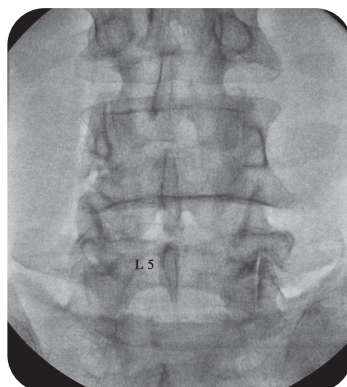
Don in the SPS II while obtaining an oblique image of the lumbar spine



Lateral image of the lumbar spine



Right oblique image of the lumbar spine



AP image of the lumbar spine



SPINE POSITIONING SYSTEM II

PATIENT - MARY

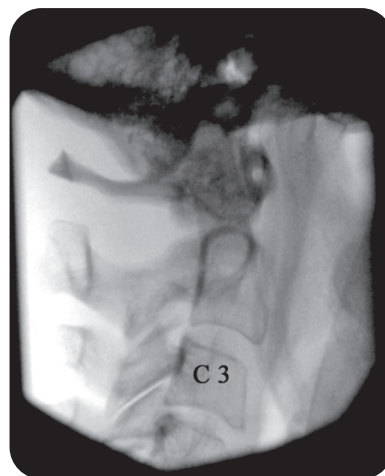
COMPONENTS USED: Platform Frame, Crescent Face Rest Pad, Contoured Torso Support Pad, Contoured Torso Wedge, 7" x 12" Rectangular Adjuster Pad, 8" Semi-Round Bolster (not pictured)



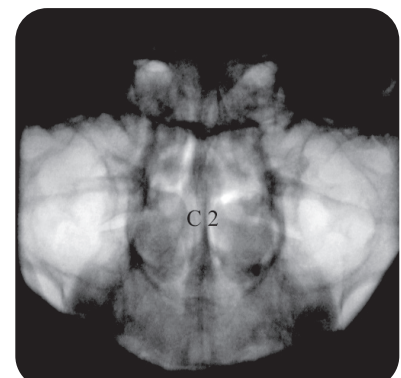
SPS II set up for Mary shown here



Mary in the SPS II while obtaining an AP image through the C1-2 segment



Lateral image through the C1-3 segments



AP image through the C1-2 joints



SPINE POSITIONING SYSTEM II

PATIENT - DEBBIE

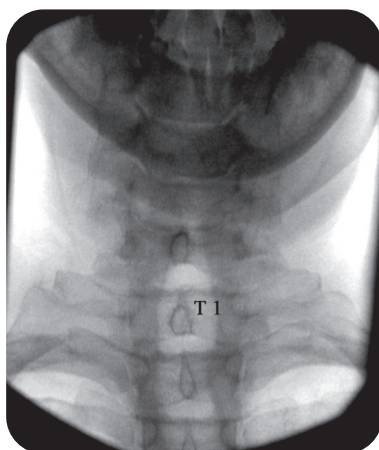
COMPONENTS USED: Platform Frame, Crescent Face Rest Pad, Contoured Torso Support Pad, Contoured Torso Wedge, 7" x 12" Rectangular Adjuster Pad, 8" Semi-Round Bolster (not pictured)



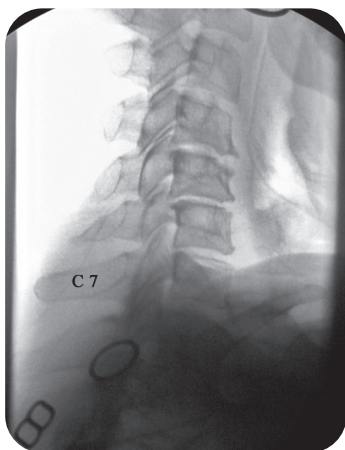
SPS II set up for Debbie shown here



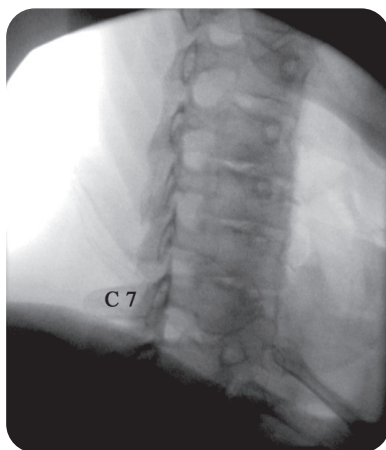
Debbie in the SPS II while obtaining a lateral cervical image.



AP image of the cervical spine while imaging through the C7-T1 interlaminar space.



Complete lateral image of the cervical spine including the C7-T1 segment.



Contralateral oblique of the cervical spine.



SPINE POSITIONING SYSTEM II

An integral component of the Pain Management suite...

“The Spine Positioning System II solves imaging, stability and comfort issues associated with performance of spine procedures. The cervical and thoracic spine including the cervicothoracic junction can now be visualized in AP, oblique and lateral projections regardless of the patient’s body habitus. All posterior approach spine procedures can now be accurately performed as visualization of the necessary anatomic landmarks is possible due to the unique design of the Spine Positioning System II.”

Paul Dreyfuss, MD



TESTIMONIALS

“The Oakworks positioning device is the single most significant advance in my fluoroscopy technique in over 15 years. This device facilitates clear imaging of complex anatomy in all body types while maintaining safe airway access and excellent patient comfort. It is hard for me to imagine doing a cervical or thoracic procedure without the Oakworks device.”

Dr. Wright

“The SPS II frame allows optimal visualization during those problematic cervical procedures, and at times turn what would otherwise be~practically speaking~ a difficult "one-view case" into something that seems routine. In the lumbar spine, particularly for longer cases such as discography or radiofrequency procedures, the SPS II frame provides essential patient comfort and stability, allowing me to proceed at a comfortable pace, free of frequent repositioning or issues of patient discomfort. I get piece of mind; the patients gets a safer and more comfortable procedure~ compelling reasons for routine use of the Oakworks device.”

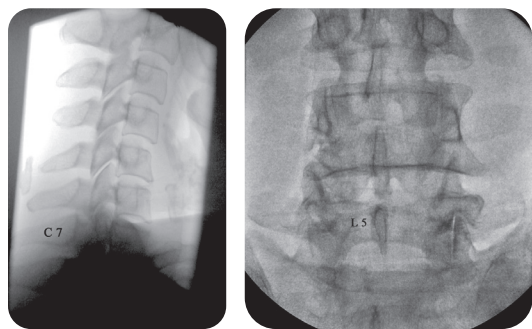
Dr. Summers

“Safety is the biggest issue- the SPS II provides better visualization, less radiation exposure, no guessing.”

Dr. C.

“We have seen time after time that once physicians utilize the SPS II in their practice, they are able to position their patients quicker, more comfortably and get a better image the first try. The SPS II will quickly pay for itself by allowing more procedures in less time.”

Dawson Crowley



FOR MORE INFORMATION

Visit www.oakworksmed.com



OAKWORKS[®]
MEDICAL
Position for Success

Please visit our website, www.oakworksmed.com, to view our complete line of tables and accessories for C-arm Imaging, Pain Management, Ultrasound, Urology, Lithotripsy, Exam & Treatment.

made in the USA



Pain Management Tables



Urology Tables



Procedure Chairs



Vascular Tables



Ultrasound Tables