










ri-scope<sup>®</sup> LED

efficient, white, bright

	<b>Introduction to the ri-scope® L</b>	<b>03-04</b>
	<b>Instruments for E.N.T.</b>	<b>05-08</b>
	<b>Otoscope</b>	<b>05</b>
	ri-scope® L Otoscope L1-L3	
	ri-scope® Operation otoscope	
	<b>Specula</b>	<b>06-07</b>
	ri-scope® L Otoscopes	
	ri-scope® O.P. Otoscope	
	<b>Tongue blade holder</b>	<b>07-08</b>
	ri-scope® F.O. tongue blade holder	
	Accessories	
	<i>Wooden tongue depressors</i>	
	<b>Nasal speculum</b>	<b>08</b>
	ri-scope® F.O. Nasal speculum	
	<b>Light conductor</b>	<b>08</b>
	ri-scope® F.O. Light conductor	
	Accessories	
	<i>Laryngeal mirrors</i>	
	<b>Ophthalmological Instruments</b>	<b>09-10</b>
	<b>Ophthalmoscopes</b>	<b>09</b>
	ri-scope® L Ophthalmoscope L1-L3	
	<b>Retinoscopes</b>	<b>10</b>
	ri-scope® retinoscope (skiascope)	
	<b>Dermatological Instruments</b>	<b>11-12</b>
	ri-derma® dermatoscopes	<b>11</b>
	<b>Dermatoscope</b>	<b>12</b>
	Accessories	
	<b>Lamps</b>	<b>13</b>
	HL 2.5-V Halogen lamps	<b>13</b>
	XL 2,5-V/3.5-V Xenon lamps	
	3.5-V LED lamps	
	<b>Power sources</b>	<b>14-17</b>
	<b>Handles</b>	<b>14-15</b>
	<b>Charging bases</b>	<b>15</b>
	<b>Wall stations</b>	<b>16</b>
	<b>Extension modules</b>	<b>17</b>
	Accessories	
	<b>Sets</b>	<b>18-23</b>

## ri-scope® LED

### Premium hand held LED diagnostic instruments.

The new LED / Li-Ion Technology leads to more reliability of the instruments due to significantly longer battery service life and LEDs. Consistent light output of white and bright LEDs leads to a more efficient diagnosis.

### LED illumination – bright, white light with a nearly unlimited lifetime!

- Available for all ri-scope® L instruments and dermatoscopes, except retinoscopes
- White high performance LED 5.500K / 17.500 Lux
- Lifetime > 10,000 hours compared to 20-30 hours of halogen/Xenon lamps

### Li-ion batteries – more light-weight, more powerful

- 50 hours burning time of LED with fully charged Li-Ion battery
- rechargeable battery lifetime: up to 1200 charging cycles

### rheotronic® – electronic light intensity adjustment for LEDs and light bulbs

- 100% light output after short switch activation
- Continuously variable light adjustment
- Automatic safety shut-down after 120 seconds

### Renowned high performance optics

#### Otoscopes

- glass optics with high depth of focus and precise 3-times magnification up to the image margin
- reflection minimized, consistent illumination
- fiberoptics provide highest light efficiency

#### Ophthalmoscope

- dust-proof
- aspherical condenser lens
- coaxial observational and illuminational light beams
- reflection-reduced view even with small pupils

**LED + Li-Ion**  
*inside*



Otoscope with  
battery handle Type AA

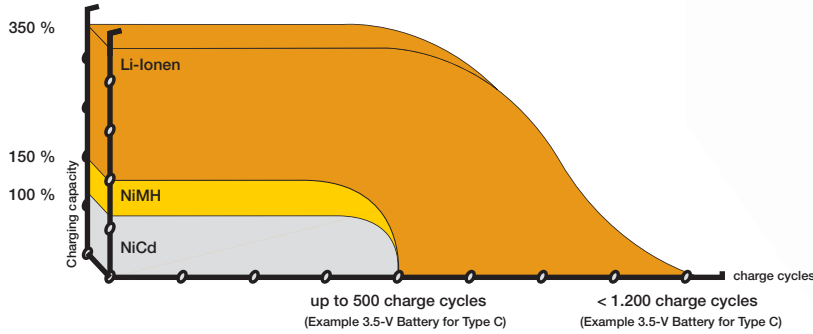
Ophthalmoscope with  
battery handle Type C

# ri-scope® L „Light and performance like never before“ The best ri-scope® of all times.



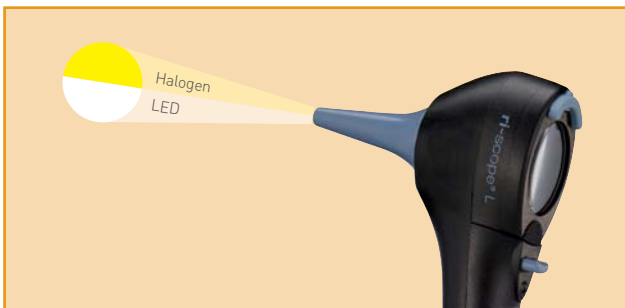
## Lithium-ion battery – The power plus.

Memory effect and self-discharge are no match: the light-weight lithium-ion battery used in the ri-scope® L has an unsurpassed lifetime – with higher loading capacity and sustained high-power performance, even after well over 1000 charge cycles.



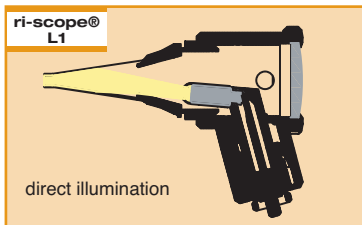
## LED technology – performance for life.

Nearly unlimited lifetime with the highest luminosity: these advantages make the LED technology used with the ri-scope® L so unique. Moreover, the lamp inside the ri-scope® L never gets hot, provides true-color, even illumination of the area under examination and is practically guaranteed never to fail, in contrast to conventional halogen or xenon lamps.

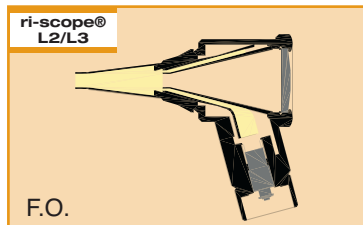


## LED illumination

For uniform illumination of the examination field with pure white light (5500 K). The LED illumination shows colours as they really are. Helpful for efficient diagnostics plus an almost unlimited service life.



Reflection-reduced, cost-effective direct illumination with 2.5-V HL halogen or 3.5-V XL xenon lamps.



Fiber optics with 2.5-V/3,5-V XL xenon or 3.5-V LED illumination ensure an unhindered, glare-free view.



rheotronic® makes examinations easier than flipping a switch! Riester handles with the patented rheotronic® function switch on automatically to the touch and shut off after 120 seconds by themselves when put away. The light intensity can be adjusted with the rheotronic®.

## ri-scope® L Otoscopes

Premium otoscopes with glass optics and LED / Li-Ion technology

### ri-scope® L1

The inexpensive basic model with reduced-reflection, direct illumination (without specula ejection device)

- Direct illumination with 2.5-V halogen, or 3.5-V xenon lamp
- Bi-directional swivelling optical glass with 3-fold magnification, optional available with operation lens with 4-fold magnification
- Metal fitting for ri-mini®/pen-scope® specula, compatible with specula by other well-known manufacturers
- Suitable for pneumatic tests (supplied without ball)
- Available with optional C or AA handles (runs on commercial alkaline or NiMH batteries)

### ri-scope® L2

The inexpensive F.O. model with 2.5-V/3,5V xenon or 3.5-V LED lights (without specula ejection device)

- Fiberoptics for optimal beaming and transmission of the light
- Bi-directional swivelling, sealing optical glass with 3-fold magnification
- Optional operation lens with 4-fold magnification available
- Metal fitting for ri-mini®/pen-scope® specula, compatible with specula by other well-known manufacturers
- Suitable for pneumatic tests (supplied without ball)
- Available with optional C or AA handles (runs on commercial alkaline or Li batteries or Li-ion batteries)

### ri-scope® L3

The high-end F.O. version with 2,5V/3,5V Xenon or 3,5V LED illumination, specula ejection device and operation lens.

- Fiberoptics for optimal beaming and transmission of the light
- Bi-directional swivelling optical glass with 3-fold magnification
- Operation lens with 4-fold magnification and **glass mini optic** ease the insertion of instruments
- Easy-to-operate **SpecEjec®** specula ejection device
- Fitting for ri-scope® specula and enlarged conduit for instruments
- Suitable for pneumatic tests (supplied without ball)
- Available with optional C or AA handles (runs on commercial alkaline or Li batteries or Li-ion batteries)

### Operation otoscope



ri-scope® Operation otoscope

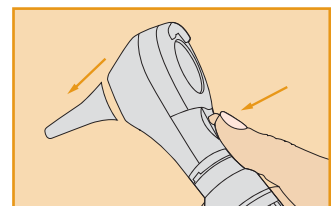
- HL 2.5-V halogen lamp, XL 3.5-V xenon lamp.
- Swivelling lens with 2.5-fold magnification.
- Movable speculum holder can be fixed in any position.
- Open design for unhindered use during examination and operation.
- Bayonet fitting for quick and secure attachment to the handle.
- OP otoscope made of metal and speculum holder made of impact-resistant plastic for long service life.
- Bulbs can be quickly replaced on the front of the otoscope.



without anti-theft device  
**Nr. 10562** HL 2,5 V  
**Nr. 10563** XL 3,5 V  
with anti-theft device  
**Nr. 10563-301** XL 3,5 V

without anti-theft device  
**Nr. 10564** XL 2,5 V  
**Nr. 10580** XL 3,5 V  
**Nr. 10565** LED 3,5 V  
with anti-theft device  
**Nr. 10580-301** XL 3,5 V  
**Nr. 10565-301** LED 3,5 V

without anti-theft device  
**Nr. 10566** XL 2,5 V  
**Nr. 10581** XL 3,5 V  
**Nr. 10567** LED 3,5 V  
with anti-theft device  
**Nr. 10581-301** XL 3,5 V  
**Nr. 10567-301** LED 3,5 V



The SpecEjec® device enables touchless ejection of used ear specula for hygienic and simplified handling.

without anti-theft device  
**Nr. 10560** HL 2,5 V  
**Nr. 10561** XL 3,5 V  
with anti-theft device  
**Nr. 10561-301** XL 3,5 V

## Specula for ri-scope® L1/L2 otoscopes

### Reusable ear specula



- Selection of different sizes: 2 mm, 2,5 mm, 3 mm, 4 mm und 5 mm.
- Made of black plastic.
- Each speculum is labelled by size
- Sterilization at 134° C for 10 minutes in steam sterilizer or disinfection by conventional means possible.
- Delivered in a poly bag.

**2 mm, L1/L2**  
Nr. 10775 10 pcs.

**2,5 mm, L1/L2**  
Nr. 10779 10 pcs.

**3 mm, L1/L2**  
Nr. 10783 10 pcs.

**4 mm, L1/L2**  
Nr. 10789 10 pcs.

**5 mm, L1/L2**  
Nr. 10795 10 pcs.

### Disposable specula



- For single use.
- An especially hygienic option for the prevention of cross-contamination
- Made of blue plastic.
- Delivered in a poly bag.

**2 mm, L1/L2**  
Nr. 10772-532 100 pcs.  
Nr. 10773-532 500 pcs.  
Nr. 10774-532 1000 pcs.

**2,5 mm, L1/L2**  
Nr. 10772-531 100 pcs.  
Nr. 10773-531 500 pcs.  
Nr. 10774-531 1000 pcs.

**3 mm, L1/L2**  
Nr. 10772-533 100 pcs.  
Nr. 10773-533 500 pcs.  
Nr. 10774-533 1000 pcs.

**4 mm, L1/L2**  
Nr. 10772-534 100 pcs.  
Nr. 10773-534 500 pcs.  
Nr. 10774-534 1000 pcs.

**5 mm, L1/L2**  
Nr. 10772-535 100 pcs.  
Nr. 10773-535 500 pcs.  
Nr. 10774-535 1000 pcs.

## Specula for ri-scope® L3 otoscope

### Reusable specula



- Specially developed for use with the **SpecEjec®** option, absolutely reliable handling.
- The 9-mm speculum is suitable for use as a nasal speculum.
- Selection of different sizes: 2 mm, 3 mm, 4 mm, 5 mm und 9 mm.
- Delivered in a poly bag.
- Each speculum is labelled by size.
- For repeat use.
- Sterilization at 134° C for 10 minutes in steam sterilizer or disinfection by conventional means possible.
- Made of black plastic.

**Ear specula, 2 mm, L3**  
Nr. 10800-532 10 pcs.

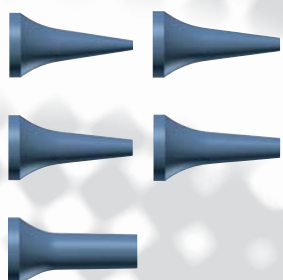
**3 mm, L3**  
Nr. 10800-533 10 pcs.

**4 mm, L3**  
Nr. 10800-534 10 pcs.

**5 mm, L3**  
Nr. 10800-535 10 pcs.

**Nasal specula, 9 mm, L3**  
Nr. 10800-539 10 pcs.

### Disposable specula



- For single use.
- An especially hygienic option for the prevention of cross-contamination
- Made of blue plastic.
- Delivered in a poly bag.

**2 mm, L3**  
Nr. 10801-532 100 pcs.  
Nr. 10802-532 500 pcs.  
Nr. 10803-532 1000 pcs.

**3 mm, L3**  
Nr. 10801-533 100 pcs.  
Nr. 10802-533 500 pcs.  
Nr. 10803-533 1000 pcs.

**4 mm, L3**  
Nr. 10801-534 100 pcs.  
Nr. 10802-534 500 pcs.  
Nr. 10803-534 1000 pcs.

**5 mm, L3**  
Nr. 10801-535 100 pcs.  
Nr. 10802-535 500 pcs.  
Nr. 10803-535 1000 pcs.

**9 mm, L3**  
Nr. 10801-539 100 pcs.  
Nr. 10802-539 500 pcs.  
Nr. 10803-539 1000 pcs.

Reusable specula



- Stable and durable plastic specula with metal attachment for repeat use.
- Can be sterilized at 134° C for 10 minutes in steam sterilizer.
- Selection of different sizes: 2 mm, 3 mm, 4 mm, 5 mm und 9 mm.
- The 9-mm speculum is suitable for use as a nasal speculum.
- Each speculum is labelled by size.
- Delivered in a poly bag.

Ear specula, 2 mm  
Nr. 10460 1 pc.

3 mm  
Nr. 10461 1 pc.

4 mm  
Nr. 10462 1 pc.

5 mm  
Nr. 10463 1 pc.

Nasal specula, 9 mm  
Nr. 10464 1 pc.

Accessories



Operation lens  
for ri-scope® L otoscope

- Optical glass and small in diameter for insertion of instruments
- 4-fold magnification.
- With pin connector.

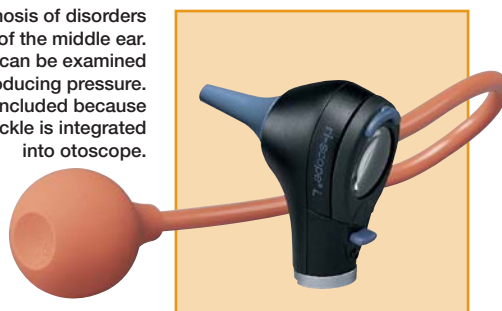
Nr. 11449

Ball for the pneumatic test  
for all Riester otoscopes

Nr. 10960



For the diagnosis of disorders of the middle ear. The ear drum can be examined optimally by producing pressure. No connector included because side-release buckle is integrated into otoscope.



ri-scope® F.O. tongue blade holder

- With 3.5V LED, XL 3,5V or XL 2.5V xenon lamp.
- High-quality fiberoptic lightwave conductor for optimal beaming and transmission of the light. In combination with the lamp this provides cool examination light similar to daylight.
- Slide attachment for fixing and detaching wooden tongue depressors for a firm hold.
- Bayonet fitting for quick and secure attachment to the handle.
- Sturdy, very light casing made of ABS plastic for a long service life.
- Bulbs can be quickly replaced at the base of the instrument head.

without anti-theft device

Nr. 10534 XL 2,5 V  
Nr. 10535 XL 3,5 V  
Nr. 10574 LED 3,5 V

with anti-theft device

Nr. 10535-301 XL 3,5 V  
Nr. 10574-301 LED 3,5 V



LED + Li-Ion  
inside





### Wooden tongue depressors

- 100 disposable wooden tongue depressors in practical dispenser.
- Smooth and splinter-free depressors with rounded edges, made of high-quality, light birch wood.
- Depressor dimensions: 150 x 18 x 1.7 mm.
- Non-sterile, heated to 70° C.

Nr. 12530

Minimum order:  
100 packages  
(10.000 depressors)

### Nasal speculum



**LED + Li-Ion**  
*inside*

### ri-scope® F.O. nasal speculum

- With 3.5-V LED, XL 2,5V/3,5-V xenonlamp.
- High-quality fiberoptic lightwave conductor for optimal beaming and transmission of the light. In combination with the lamp this provides cool examination light similar to daylight.
- Swivelling and removable lens with 2.5-fold magnification.
- Slow and controlled expansion of the speculum by turning on the screw adjuster, fast expansion by pressing down on the screw adjuster.
- Bayonet fitting for quick and secure attachment to the handle.
- Impact resistant casing made of glass-fiber reinforced plastic.
- Bulbs can be quickly replaced at the base of the instrument head.

without anti-theft device

**Nr. 10536** XL 2,5 V

**Nr. 10537** XL 3,5 V

**Nr. 10575** LED 3,5 V

with anti-theft device

**Nr. 10537-301** XL 3,5 V

**Nr. 10575-301** LED 3,5 V

### Light conductor



**LED + Li-Ion**  
*inside*

### ri-scope® F.O. light conductor

- With 3.5-V LED, XL 2,5V/3,5-V xenonlamp.
- High-quality fiberoptic lightwave conductor for optimal beaming and transmission of the light. Best illumination of throat and laryngeal areas.
- Bayonet fitting for quick and secure attachment to the handle.
- Chrome-plated metal, durable and sturdy.
- Bulbs can be quickly replaced at the base of the instrument head.

without anti-theft device

**Nr. 10538** XL 2,5 V

**Nr. 10539** XL 3,5 V

**Nr. 10576** LED 3,5 V

with anti-theft device

**Nr. 10539-301** XL 3,5 V

**Nr. 10576-301** LED 3,5 V

### Accessories



### Laryngeal mirrors

for ri-scope® F.O. light conductor

- Two laryngeal mirrors No. 3 (Ø 20 mm) and No. 4 (Ø 22 mm) for illumination and mirroring of laryngeal area.
- Easily attached to the light conductor.

Nr. 10447

1 pair

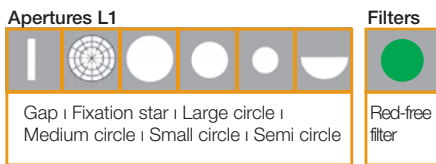


# ri-scope® L ophthalmoscopes

Premium-class direct ophthalmoscope with renowned high-performance optics and LED / Li-Ion technology.



## ri-scope® L1



The inexpensive basic model with all the important basic functions

- Diopter wheel with 29 corrective lenses  
Plus 1-10, 12, 15, 20, 40  
Minus 1-10, 15, 20, 25, 30, 35
- Easy-to-operate aperture hand-wheel with semi-circle, small/medium/large circle fixation star, slit and red-free filter with contrast-enhancing effect
- Includes filter wheel engageable for all apertures with symbol display, red-free filter
- Optimized high-performance optics with aspherical condenser lens
- Parallel beam path
- Dust-proof

without anti-theft device

**Nr. 10568** HL 2,5 V

**Nr. 10569** XL 3,5 V

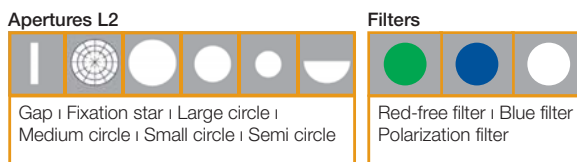
**Nr. 10569-203** LED 3,5 V

with anti-theft device

**Nr. 10569-301** XL 3,5 V

**Nr. 10594-301** LED 3,5 V

## ri-scope® L2



The enhanced basic model with separately engageable red-free, blue and polarization filters for each aperture.

- Diopter wheel with 29 corrective lenses  
Plus 1-10, 12, 15, 20, 40  
Minus 1-10, 15, 20, 25, 30, 35
- Easy-to-operate aperture hand-wheel with semi-circle, small/medium/large circle, fixation star, and slit
- Includes filter wheel engageable for all apertures with symbol display, red-free filter, blue filter and polarization filter
- Optimized high-performance optics with aspherical condenser lens
- Parallel beam path
- Dust-proof

without anti-theft device

**Nr. 10570** HL 2,5 V

**Nr. 10571** XL 3,5 V

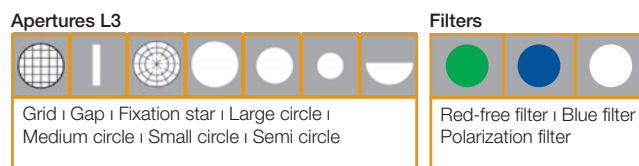
**Nr. 10571-203** LED 3,5 V

with anti-theft device

**Nr. 10571-301** XL 3,5 V

**Nr. 10595-301** LED 3,5 V

## ri-scope® L3



The maximized model with additional focussing device and 89 single-step diopter values.

- Corrective lenses for 89 diopter values  
Plus 1-45 in single steps  
Minus 1-44 in single steps
- Easy-to-operate aperture hand-wheel with semi-circle, small/medium/large circle, fixation star, slit and grid
- Includes filter wheel engageable for all apertures with symbol display, red-free filter, blue filter and polarization filter
- Focussing device with zero retention force for the quick correction of ametropias.
- Dust-proof

without anti-theft device

**Nr. 1057** HL 2,5 V

**Nr. 10573** XL 3,5 V

**Nr. 10573-203** LED 3,5 V

with anti-theft device

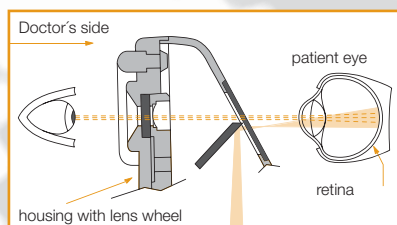
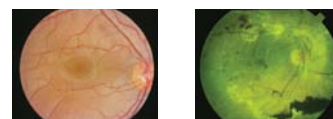
**Nr. 10573-301** XL 3,5 V

**Nr. 10596-301** LED 3,5 V

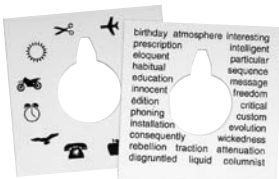
### Corrective lenses L1/L2

D+	1	2	3	4	5	6	7	8	9	10	12	15	20	40	
D-	1	2	3	4	5	6	7	8	9	10	15	20	25	30	35

Corrective lenses from +40 through -35 diopters guarantee a sharp picture, even in cases of especially severe refraction anomalies.

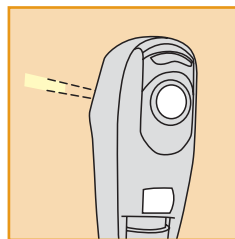
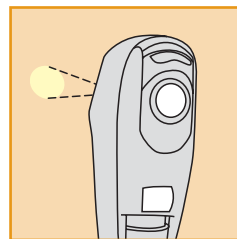


Reflexes from the cornea and iris are avoided by separating the observational and illuminating light beams (Gullstrand's principle). The illuminated retinal area is completely visible – even in cases of contracted pupils - creating optimal conditions for ophthalmological examinations.



**ri-scope® retinoscope (skiascope)**

- The ri-scope® retinoscope (skiascope) measures the refractive power of the eye. Refractive flaws, such as near- and far-sightedness, as well as astigmatism can be detected and diagnosed.
- With XL 3.5-V xenon lamp or HL 2.5-V halogen lamp.
- Two models are available:
  - The spot-light retinoscope projects a circular light beam.
  - The slit-light retinoscope with a light beam in the form of a line, simplifies detection and diagnosis of astigmatic refractive flaws. The reflex in the form of a line is moved vertically to the axis across the pupils of the patient with a slight oscillating movement. A shadow moves in the same or opposite direction. Co-movement (plus lines): The patient is far-sighted. Counter-movement (minus lines): The patient is near-sighted.
- Easy to operate with knurled thumb screw. The line and spot image can be focused with the controls and turned 360°, angle read-out displayed on the integrated scale.
- Holder for hanging and placement of the fixation card into position for dynamic retinoscopy.
- Delivered with two fixation cards. The patient's eye can adjust optimally to the distance to the retinoscope.
- Integrated eyeglass protection.
- Bayonet fitting for quick and secure attachment to the handle.
- Dust-proof, very sturdy and light casing made of impact-resistant ABS plastic.
- Bulbs can be quickly replaced at the base of the instrument head.



The ri-scope® retinoscope (skiascope) is available with circular light beam or light beam in the form of a line.



The slit and spot image can be turned 360° with the knurled thumb screw. The respective angle read-out is displayed directly on the scale.



The fixation cards may be placed on the holder and be attached.

**Slit**

without anti-theft device

**Nr. 10543** HL 2,5 V

**Nr. 10544** XL 3,5 V

with anti-theft device

**Nr. 10544-301** XL 3,5 V

**Spot**

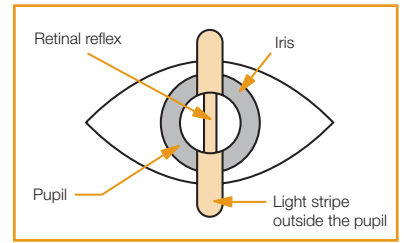
without anti-theft device

**Nr. 10545** HL 2,5 V

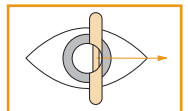
**Nr. 10546** XL 3,5 V

with anti-theft device

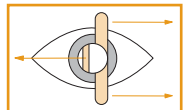
**Nr. 10546-301** XL 3,5 V



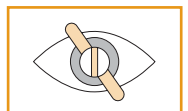
**Co-movement  
Far-sightedness**



**Counter-movement  
Near-sightedness**



**Line outside  
the axis  
Astigmatism**



## ri-derma® dermatoscopes

Today skin cancer is a commonly occurring disease, which can often be diagnosed and treated at an early stage. The ri-derma® dermatoscope offers physicians and specialists a reliable method of dermatoscopic screening and early identification of malignant melanomas. Proven epiluminescence microscopy allows melanocytic and non-melanocytic structures to be distinguished and enables precise observation of changes in skin pigmentation.

- Illumination of the examination field with 3.5-V LED illumination and/or 2.5-V HL halogen illumination resembles natural daylight.
- 10-fold magnification of the structure of the skin with focussing, achromatic lens.
- Two different skin-friendly and sterilizable contact plates are available:
  - with scale from 0 – 10 mm for exact measurement of pigmented skin lesions,
  - without scale.
- Bulbs can be quickly replaced at the base of the instrument head.
- Stable casing of black chrome-plated metal, dust-proof.
- Practical eyeglass protection.
- Bayonet fitting for quick and secure attachment of the instrument head to the handle.
- Large selection of power sources:
  - handy and stable handles,
  - practical chargers and
  - well-conceived diagnostic stations.
- Large selection of ri-derma® sets at especially attractive prices.
- All of the power sources can be combined with the high-quality Riester ri-scope® line.
- Developed and manufactured in Germany.



**LED + Li-Ion**  
*inside*



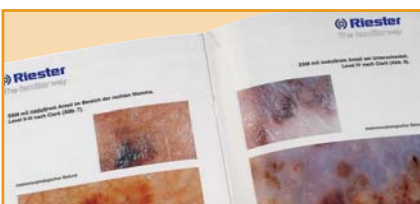
The bulb can be quickly replaced at the base of the instrument head.



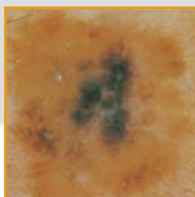
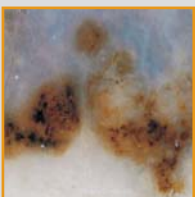
Focussing device with eyeglass protection.



Bayonet fitting for securely fastening ri-derma® to the handle.



Detailed brochure with useful information on epiluminescence microscopy available upon request. Many dermatoscopic findings are shown and explained.



ri-derma® allows for better assessment of the skin surface structure, color and pigmentation, making it easier to distinguish between melanocytic and non-melanocytic skin changes.



**ri-derma® dermatoscope**

- With 3.5-V LED or HL 2.5-V halogen lamp.
- 10-fold magnification of the skin structure with focussing, achromatic lens.
- Stable and dust-proof casing made of black chrome-plated metal.
- Practical eyeglass protection.
- Bayonet fitting for quick and secure attachment of the instrument head to the handle.
- Contact plate with scale included.
- **For ri-derma® sets, please see page 23.**

without anti-theft device

**Nr. 10577**

**LED 3,5 V**

**Nr. 10550**

**HL 2,5 V**

with anti-theft device

**Nr. 10577-301**

**LED 3,5 V**

**Accessories**



without scaling



with scaling  
0 – 10 mm

**Contact plates for ri-derma®**

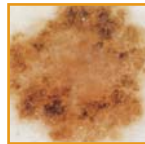
- Non-reflecting and highly transparent contact plate made of stable, scratch-resistant material.
- Especially flat protective ring against cold made of plastic for optimal adaptation to the skin.
- Disinfectable materials for hygienic use.

**Nr. 10968**

without scaling

**Nr. 10969**

with scaling



Refined scaling down to 0.5 mm allows for exact measurement of pigmented skin lesions.

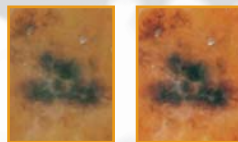


**Dermatoscopic oil**

Four 12.5 ml glass vials

**Nr. 10970**

- Upper skin layers become transparent, the skin surface becomes smooth.
- Oil rids the skin almost completely of reflection.
- Better assessment of surface structure, color, pigmentation and melanocytic or non-melanocytic structures.
- In a box.



Riester dermatoscopic oil makes the upper skin layers transparent, making it easier to assess changes in the skin.



## Lamps

Riester LED, XL xenon and HL halogen lamps shine more light on the diagnosis. They always ensure optimal illumination of the area under examination. The latest technology provides illumination that is similar to daylight.

### HL/XL 2.5V lamp



**HL 2.5-V halogen lamp**  
For ri-scope® otoscope L1

Nr. 10590



**XL 2.5-V xenon lamp**  
For ri-scope® F.O. otoscope L2/L3,  
Light conductor, nasal speculum and tongue  
blade holder. Pack contains 6 units

Nr. 10600



**HL 2.5-V halogen lamp**  
For ri-scope® operation otoscope  
Pack contains 6 units

Nr. 10602



**HL 2.5-V halogen lamp**  
For ri-scope® ophthalmoscope and ri-derma®  
Pack contains 6 units

Nr. 10605



**HL 2.5-V halogen lamp**  
For ri-scope® retinoscope slit lamp  
Pack contains 6 units

Nr. 10615



**HL 2.5-V halogen lamp**  
For ri-scope® retinoscope spot-light  
Pack contains 6 units

Nr. 10620

### XL 3.5V xenon lamps/ 3.5V LED



**LED 3,5 V**  
For ri-scope ophthalmoscope

Nr. 10622



**LED 3,5 V**  
For ri-scope® F.O. otoscope L2/L3, ri-derma®,  
Light conductor, nasal speculum and tongue  
blade holder. Pack contains 6 units

Nr. 10599



**XL 3.5-V xenon lamp**  
For ri-scope® Otoscope L1

Nr. 10487



**XL 3.5-V xenon lamp**  
For ri-scope® Otoscope L2, L3

Nr. 10607



**XL 3.5-V xenon lamp**  
For ri-scope® ophthalmoscope, ri-derma®  
Pack contains 6 units

Nr. 10608



**XL 3.5-V xenon lamp**  
For ri-scope® operation otoscope  
Pack contains 6 units

Nr. 10609



**XL 3.5-V xenon lamp**  
For ri-scope® retinoscope slit lamp  
Pack contains 6 units

Nr. 10610



**XL 3.5-V xenon lamp**  
For ri-scope® retinoscope spot-light  
Pack contains 6 units

Nr. 10611



## Power sources

The Riester ri-scope® line includes a large selection of high-quality and long-lasting power sources, from handy and stable handles to the innovative charging device and to the practical diagnostic station. The 230-V or 120-V instruments shown here are standard versions. If you require other voltages or specialized plugs for your country, we request that you make this information available to us when inquiring or ordering.

## Handles

Handy Riester handles with continuously adjustable rheotronic® for regulating light intensity are the basis for a safe examination. The well-conceived ergonomically plug and battery handles guarantee comfortable handling.

- Solid metal handles, black chrome-plated.
- Practical bayonet fitting for quickly switching instrument heads.
- Batteries are easy to replace at the base of the handle.
- For 3.5-V and 2.5-V ri-scope® and ri-derma® instrument heads.



rheotronic®

- Patented technology for LEDs and bulbs.
- Activation by briefly tapping the rotating button to +, immediate 100 % light output
- Continuously variable adjustment by briefly tapping to + or -
- Deactivation by longer tapping to -
- Diode signals whether handle is on or off
- Automatic safety shutdown after 120s



### Battery handles Type C without batteries

- Handle diameter: 28 mm.
- Easy to charge in the ri-charger® charging base.
- With rheotronic®.

rheotronic® for alkaline battery,  
Li-ion battery and NiMH battery  
**Nr. 10670**

rheotronic® for Li batteries  
**Nr. 10630**

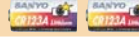
Alkaline battery Type C (2 pieces)



**Nr. 10686**

2,5 V

Li battery (2 pieces)



**Nr. 11287**

3,5 V

NiMH Battery ri-accu®



**Nr. 10681**

2,5 V

Li-ion battery ri-accu® L



**Nr. 10691**

3,5 V



### Plug handles

For ri-accu® and ri-accu® L rechargeable battery

- Handle diameter: 28 mm.
- Easy to charge by plugging it in.
- With rheotronic®.

with rheotronic®

**Nr. 10638**

3,5+2,5 V/230 V

**Nr. 10639**

3,5+2,5 V/120 V

Li-ion battery ri-accu® L



**Nr. 10692**

3,5 V



The Combi-handle combines three functions! It is always ready for use – even when electricity is not permanently available from the socket!

### Combi-handles

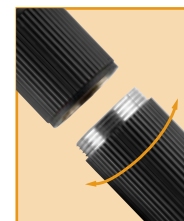
with rechargeable NiMH Battery ri-accu® for plug-in handle casing

- plug-in handle casing for one rechargeable NiMH battery ri-accu® (No. 10683, 2.5 V), alternative handle casing for a rechargeable NiMH battery ri-accu® (No. 10681, 2.5 V) or for two Type C batteries.
- By simply switching the plug-in casing with the alternative handle casing the plug-in handle converts to a battery handle – quickly and cost-effectively. There is no need to place an adapter in between!
- Handle diameter: 28 mm.
- Easy to recharge in ri-charger® charging base or by plugging it into the socket.
- The combi-handle can not be combined with parts for Type C battery handles or plug-in handles.




with rheotronic®

Nr. 10666  
Nr. 10667

2,5 V/230 V  
2,5 V/120 V



Thanks to the screw thread the Combi-handle can be converted quite simply from a plug-in into a battery handle. There is no need to place an adapter in between!

NiMH Battery ri-accu® for plug handles 	Nr. 10683	2,5 V
NiMH Battery ri-accu® for battery handles Type C 	Nr. 10681	2,5 V
Alkaline Battery Type C (2 pcs.) 	Nr. 10686	2,5 V






### Battery handle Type AA

With rheotronic® without batteries

for Alkaline batteries Type AA and Li-ion batteries  
Nr. 10642

for Li batteries  
Nr. 10643

Alkaline batteries Type AA (each handle requires 2) 	Nr. 10685	2,5 V
Li battery (2 pcs.) 	Nr. 11287	3,5 V
Li-ion battery ri-accu® L 	Nr. 10690	3,5 V

### Charging bases

ri-charger® is the perfect charging base for all rechargeable battery handles, Type C/AA.

- Table or wall model.
- Practical storage container for two replacement lamps and ear specula.
- Charging status displayed on the device:  
Yellow: charging in progress.  
Green: charging completed.



ri-charger® complete, with wall holder  
Nr. 10700  
Nr. 10701  
• For all 2.5-V and 3.5-V rechargeable handles with NiMH- or NiCd rechargeable batteries, 120 V + 230 V

Nr. 10700  
Nr. 10701  
230 V  
120 V



ri-charger® L complete, with wall holder  
Nr. 10705  
Nr. 10706  
• For all rechargeable handles with Li-ion batteries, 120 V + 230 V

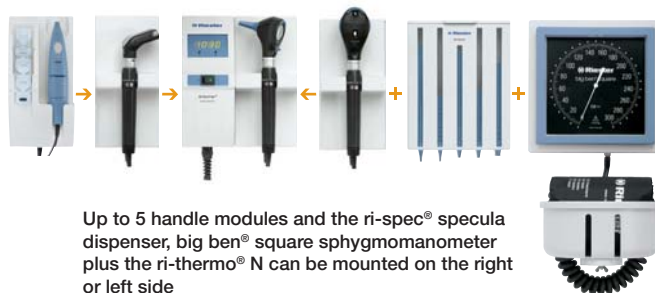
Nr. 10705  
Nr. 10706  
230 V  
120 V



## Wall stations

ri-former® LED – modular wall station for E.N.T. Instruments, ophthalmic instruments, dermatoscope, sphygmomanometer and thermometer. The basic module is available with one handle for one instruments and can be supplemented with up to 4 more handle modules, and a sphygmomanometer and a thermometer. With its centralized power supply and LED illumination, ri-former® LED practically is maintenance-free.

- 3 years warranty for LED version, including LEDs
- Maintenance-free, including LEDs
- White, bright and cool LED illumination
- Optionally available with 3,5V Xenon illumination
- The handles automatically switch on or off when removing or replacing them in the handle unit
- rheotronic® – electronic light intensity adjustment for LEDs and light bulbs and automatic safety shut-down after 120 seconds
- Spiral cord stretches up to 3 m.
- Modular system from 1 instrument up to a maximum of 5 instruments and sphygmomanometers and thermometer in addition
- Constant output voltage prolongs service life of LEDs and bulbs and always provides consistent illumination
- Easy surface cleaning and disinfection possible



Up to 5 handle modules and the ri-spec® specula dispenser, big ben® square sphygmomanometer plus the ri-thermo® N can be mounted on the right or left side



### ri-former® diagnostic station 1 handle

- without instrument heads.
- Complete with all mounting plate, plugs, screws, and instructions for assembly.

with clock	
<b>Nr. 3650</b>	3,5 V/230 V
<b>Nr. 3651</b>	3,5 V/120 V
without clock	
<b>Nr. 3652</b>	3,5 V/230 V
<b>Nr. 3653</b>	3,5 V/120 V



### ri-former® diagnostic station 2 handles

- Without instrument heads.
- Complete with all mounting plate, plugs, screws, and instructions for assembly.

with clock	
<b>Nr. 3650-300</b>	3,5 V/230 V
<b>Nr. 3651-300</b>	3,5 V/120 V
without clock	
<b>Nr. 3652-300</b>	3,5 V/230 V
<b>Nr. 3653-300</b>	3,5 V/120 V

## Extension modules

The ri-former® diagnostic station: aesthetically designed modules for optimal diagnostic possibilities. ri-former® and its extension modules fit in with any medical practice or hospital and are color-coordinated to match other Riester products.

### Handle module



#### Extension module, 1 handle

- The handles switch on and off automatically when removed from or replaced in the handle unit. The adjustable light intensity setting is maintained until the next examination.
- Ergonomic and non-slip.
- Rheotronic®: enables continuously adjustable brightness as well as manual switching on and off.
- Spiral cord stretches up to 3 m.
- Up to 4 handle modules available for expanding the ri-former® basic module.
- Complete with all mounting plate, plugs, screws, and instructions for assembly.

Nr. 300

### big ben®



#### big ben® extension module

- Generously dimensioned scale with 145.5-mm sides and high-contrast scale display guarantees optimum readability
- With extra sturdy wall bracket made of fiber-glass-reinforced plastic and extraordinary sturdy casing.
- Maximum error tolerance: +/- 3 mm Hg.
- Also available in latex-free version (when ordering please indicate LF for "latex-free" before the article number).
- Delivered with spacious basket for storage of tubes and cuffs, as well as wall mounting plate, plugs and screws.
- Individualized basket assembly thanks to expandable spiral cord.

Nr. 3655-103 Bandage cuff Adult

Nr. 3655-106 Hook cuff Adult

Nr. 3655-109 Velcro cuff Adult

Nr. 3655-123 Velcro cuff Large adult

Nr. 3655-130 Velcro cuff Child

### ri-thermo® N



#### Infra-red thermometer ri-thermo® N

- Precise measurement of the body temperature in the ear. Clinical validation.
- Measurement takes approx. 1-2 seconds.
- Digital display for optimum readability of the measurement values in °C or in °F.
- Memory function for 12 measurements.
- Probe covers: A new probe cover should be used for every measurement in the ear for reasons of hygiene and accuracy. No measurement should be made without a probe cover!
- Two alkaline manganese batteries type AA 1.5 V included for approx. 1,000 measurements. Supplied with 25 probe covers in attractive sales packaging.

Nr. 3656 without anti-theft device

Nr. 3656-301 with anti-theft device

### Ear specula dispenser



#### ri-spec ear specula dispenser

- Specula dispenser with 5 tubes for up to 5 specula sizes.
- A hygienic and practical solution, dispenses a new speculum for each examination.
- Easy to clean and disinfect.
- Easy to refill and can be closed with a cover.
- Filling level of specula tubes visually displayed.
- Suitable for all Riester specula – except uni®/econom® with metal attachment.
- Can also be used independent of the diagnostic station.
- Complete with plugs and screws.

Nr. 3654

## Sets

Practical instrument sets for E.N.T., ophthalmology/retinoscopy and dermatology. The basic sets delivered without batteries, ri-accu® and ri-charger®. These accessories are shown under each respective art. no. and must be ordered separately. Due to the variety of possible instrument combinations, we show only a portion of all the instrument options in set form. We are happy to provide information on individualized product combinations upon request.

- 2.5-V instruments are equipped with HL/XL lamps and 3.5-V instruments are equipped with XL xenon lamps or LEDs.
- All sets are supplied in a deluxe hard case with safety catches.
- Thanks to the bayonet fitting it is easy to replace the instrument heads.























### ri-scope® L otoscope

- Tubes with 4 black, re-usable ear specula sizes 2 - 5 mm and each with 3 blue 2.5-mm (L1/L2) or 2-mm (L3) and 4-mm disposable ear specula.
- Operation lens with 4-fold magnification included only with L3.
- Deluxe hard case with safety catch.
- One spare lamp.



### ri-scope® L ophthalmoscope

- Deluxe hard case with safety catch.
- Separate magnifying glass with 5-fold magnification.
- One spare lamp.

<p><b>Battery handle, Type C with rheotronic®</b> For 2 alkaline batteries, Type C or ri-accu®</p>  <p><b>Alkaline battery, Type C</b> </p> <p><b>ri-accu® NiMH</b> </p> <p><b>ri-charger®</b> </p>	<p>Nr. 3700 Nr. 3716 Nr. 3701</p> <p>Nr. 10686 Nr. 10681 Nr. 10700 Nr. 10701</p>	<p>L1 HL 2,5 V L2 XL 2,5 V L3 XL 2,5 V</p> <p>for 2,5 V for 2,5 V 230 V 120 V</p>	<p>Nr. 3722 Nr. 3723</p> <p>Nr. 10686 Nr. 10681 Nr. 10700 Nr. 10701</p> <p>L1 HL 2,5 V L2 HL 2,5 V</p> <p>for 2,5 V for 2,5 V 230 V 120 V</p>
<p><b>Battery handle, Type C with rheotronic®</b> For 2 Li batteries</p>  <p><b>Li battery</b> </p>	<p>Nr. 3702 Nr. 3703 Nr. 3704</p> <p>Nr. 11287</p>	<p>L1 XL 3,5 V L2 LED 3,5 V L3 LED 3,5 V</p> <p>for 3,5 V</p>	<p>Nr. 3724 Nr. 3725-203 Nr. 3726-203</p> <p>Nr. 11287</p> <p>L1 XL 3,5 V L2 LED 3,5 V L3 LED 3,5 V</p> <p>for 3,5 V</p>
<p><b>Battery handle, Type C with rheotronic®</b> For ri-accu® L</p>  <p><b>ri-accu® L</b> </p> <p><b>ri-charger® L</b> </p>	<p>Nr. 3702-550 Nr. 3703-550 Nr. 3704-550</p> <p>Nr. 10691 Nr. 10705 Nr. 10706</p>	<p>L1 XL 3,5 V L2 LED 3,5 V L3 LED 3,5 V</p> <p>for 3,5 V 230 V 120 V</p>	<p>Nr. 3724-550 Nr. 3812-203 Nr. 3813-203</p> <p>Nr. 10691 Nr. 10705 Nr. 10706</p> <p>L1 XL 3,5 V L2 LED 3,5 V L3 LED 3,5 V</p> <p>for 3,5 V 230 V 120 V</p>
<p><b>Battery handle, Type AA with rheotronic®</b> For 2 alkaline batteries Type AA or ri-accu®</p>  <p><b>Alkaline batteries Type AA</b> </p> <p><b>ri-accu®</b> </p> <p><b>ri-charger®</b> </p>	<p>Nr. 3705 Nr. 3706</p> <p>Nr. 10685 Nr. 10680 Nr. 10700 Nr. 10701</p>	<p>L1 HL 2,5 V L2 XL 2,5 V</p> <p>for 2,5 V for 2,5 V 230 V 120 V</p>	<p>Nr. 3727</p> <p>Nr. 10685 Nr. 10680 Nr. 10700 Nr. 10701</p> <p>L1 HL 2,5 V</p> <p>for 2,5 V for 2,5 V 230 V 120 V</p>
<p><b>Battery handle, Type AA with rheotronic®</b> For 2 Li batteries</p>  <p><b>Li battery</b> </p>	<p>Nr. 3707 Nr. 3708 Nr. 3709</p> <p>Nr. 11287</p>	<p>L1 XL 3,5 V L2 LED 3,5 V L3 LED 3,5 V</p> <p>for 3,5 V</p>	<p>Nr. 3728 Nr. 3729-203 Nr. 3730-203</p> <p>Nr. 11287</p> <p>L1 XL 3,5 V L2 LED 3,5 V L3 LED 3,5 V</p> <p>for 3,5 V</p>
<p><b>Battery handle, Type AA with rheotronic®</b> For ri-accu® L</p>  <p><b>ri-accu® L</b> </p> <p><b>ri-charger® L</b> </p>	<p>Nr. 3707-550 Nr. 3708-550 Nr. 3709-550</p> <p>Nr. 10690 Nr. 10705 Nr. 10706</p>	<p>L1 XL 3,5 V L2 LED 3,5 V L3 LED 3,5 V</p> <p>for 3,5 V 230 V 120 V</p>	<p>Nr. 3728-550 Nr. 3814-203 Nr. 3815-203</p> <p>Nr. 10690 Nr. 10705 Nr. 10706</p> <p>L1 XL 3,5 V L2 LED 3,5 V L3 LED 3,5 V</p> <p>for 3,5 V 230 V 120 V</p>
<p><b>Plug-in handle with rheotronic®</b> For ri-accu® L</p>  <p><b>ri-accu® L</b> </p>	<p>Nr. 3710 Nr. 3711 Nr. 3712 Nr. 3713 Nr. 3714 Nr. 3715</p> <p>Nr. 10692</p>	<p>L1 XL 3,5 V/230 V L1 XL 3,5 V/120 V L2 LED 3,5 V/230 V L2 LED 3,5 V/120 V L3 LED 3,5 V/230 V L3 LED 3,5 V/120 V</p> <p>for 3,5 V</p>	<p>Nr. 3731 Nr. 3732 Nr. 3733-203 Nr. 3734-203 Nr. 3735-203 Nr. 3736-203</p> <p>Nr. 10692</p> <p>L1 XL 3,5 V/230 V L1 XL 3,5 V/120 V L2 LED 3,5 V/230 V L2 LED 3,5 V/120 V L3 LED 3,5 V/230 V L3 LED 3,5 V/120 V</p> <p>for 3,5 V</p>



**ri-scope® L otoscope/  
Ophthalmoscope**

- Tubes with 4 black, re-usable ear specula sizes 2 - 5 mm and each with 3 blue 2.5-mm (L1/L2) or 2-mm (L3) and 4-mm disposable ear specula.
- Operation lens with 4-fold magnification available only with L3.
- Deluxe hard case with safety catch.
- Two spare lamps.

**ri-scope® E.N.T.**

ri-scope® F.O. otoscope, F.O. nasal speculum and F.O. tongue blade holder

- Replacement bulb for ri-scope® F.O. otoscope, F.O. nasal speculum and F.O. tongue blade holder
- Tubes with 4 black, re-usable ear specula sizes 2 - 5 mm and each with 3 blue 2.5-mm (L1/L2) or 2-mm (L3) and 4-mm disposable ear specula.
- Operation lens with 4-fold magnification included only with L3.
- Deluxe hard case with safety catch.
- One spare lamp.

**Battery handle, Type C with rheotronic®**  
For 2 alkaline batteries, Type C or ri-accu®



Alkaline Batterie Typ C



ri-accu® NiMH



ri-charger®



Nr. 3743 L1 HL 2,5 V  
Nr. 3745 L3 Oto./L2 Oph. XL/HL 2,5 V

Nr. 10686 for 2,5 V  
Nr. 10681 for 2,5 V  
Nr. 10700 230 V  
Nr. 10701 120 V

Nr. 3759 L3 XL 2,5 V

Nr. 10686 for 2,5 V  
Nr. 10681 for 2,5 V  
Nr. 10700 230 V  
Nr. 10701 120 V

**Battery handle, Type C with rheotronic®**  
For 2 Li batteries



Li battery



Nr. 3744-203 L1 XL 3,5 V  
Nr. 3746-203 L3 Oto./L2 Oph. LED 3,5 V

Nr. 11287 for 3,5 V

Nr. 3760 L3 LED 3,5 V

Nr. 11287 for 3,5 V

**Battery handle, Type C with rheotronic®**  
For ri-accu® L



ri-accu® L



ri-charger® L

Nr. 3744-550 L1 XL 3,5 V  
Nr. 3817-203 L3 Ot./L2 Op. LED 3,5 V

Nr. 10691 for 3,5 V  
Nr. 10705 230 V  
Nr. 10706 120 V

Nr. 3760-550 L3 LED 3,5 V

Nr. 10691 for 3,5 V  
Nr. 10705 230 V  
Nr. 10706 120 V

**Battery handle, Type AA with rheotronic®**  
For 2 alkaline batteries Type AA or ri-accu®



Alkaline batteries Type AA



ri-accu®



ri-charger®



Nr. 3747 L2 Oto./L1 Oph. XL/HL 2,5 V

Nr. 10685 for 2,5 V  
Nr. 10700 230 V  
Nr. 10701 120 V

**Battery handle, Type AA with rheotronic®**  
For 2 Li batteries



Li battery



Nr. 3748-203 L2 Oto./L1 Oph. LED 3,5 V

Nr. 11287 for 3,5 V

**Battery handle, Type AA with rheotronic®**  
For ri-accu® L



ri-accu® L



ri-charger® L

Nr. 3818-203 L2 Ot./L1 Op. LED 3,5 V

Nr. 10690 for 3,5 V  
Nr. 10705 230 V  
Nr. 10706 120 V

**Plug-in handle with rheotronic®**  
For ri-accu® L



Nr. 3749-203 L3 Oto./L2 Oph. LED 3,5 V  
230 V

Nr. 3750-203 L3 Oto./L2 Oph. LED 3,5 V  
120 V

Nr. 3761 L3 LED 3,5 V/230 V  
Nr. 3762 L3 LED 3,5 V/120 V

ri-accu® L



Nr. 10692 for 3,5 V

Nr. 10692 for 3,5 V





**ri-scope® praktikant**

ri-scope® F.O. otoscope, F.O. nasal speculum, F.O. tongue blade holder and F.O. bent-arm illuminator

- Tubes with 4 black, re-usable ear specula sizes 2 - 5 mm and each with 3 blue 2.5-mm (L1/L2) or 2-mm (L3) and 4-mm disposable ear specula.
- Operation lens with 4-fold magnification included only with L3.
- Two laryngeal mirrors No. 3 and No. 4.
- Deluxe hard case with safety catch.
- One spare lamp.

**ri-scope® perfect**

ri-scope® F.O. otoscope, ophthalmoscope and F.O. tongue blade holder

- Replacement bulb for ri-scope® F.O. otoscope, F.O. tongue blade holder.
- Replacement bulb for ri-scope® ophthalmoscope.
- Tubes with 4 black, re-usable ear specula sizes 2 - 5 mm and each with 3 blue 2.5-mm (L1/L2) or 2-mm (L3) and 4-mm disposable ear specula.
- Operation lens with 4-fold magnification included only with L3.
- Deluxe hard case with safety catch.
- Two spare lamps.

**Battery handle, Type C with rheotronic®**  
For 2 alkaline batteries, Type C or ri-accu®



Alkaline battery, Type C



ri-accu® NiMH  
ri-charger®



**Nr. 3765**

L3 HL 2,5 V

**Nr. 3753**

L3 Oto./L2 Oph. HL 2,5 V

**Nr. 10686**

for 2,5 V

**Nr. 10686**

for 2,5 V

**Nr. 10681**

for 2,5 V

**Nr. 10681**

for 2,5 V

**Nr. 10700**

230 V

**Nr. 10700**

230 V

**Nr. 10701**

120 V

**Nr. 10701**

120 V

**Battery handle, Type C with rheotronic®**  
For 2 Li batteries



Li-Batterie



**Nr. 3766**

L3 LED 3,5 V

**Nr. 3754-203** L3 Oto./L2 Oph. LED 3,5 V

**Nr. 11287**

for 3,5 V

**Nr. 11287**

for 3,5 V

**Battery handle, Type C with rheotronic®**  
For ri-accu® L



ri-accu® L  
ri-charger® L



**Nr. 3766-550**

L3 LED 3,5 V

**Nr. 3819-203** L3 Oto./L2 Oph. LED 3,5 V

**Nr. 10691**

for 3,5 V

**Nr. 10691**

for 3,5 V

**Nr. 10705**

230 V

**Nr. 10705**

230 V

**Nr. 10706**

120 V

**Nr. 10706**

120 V

**Plug-in handle with rheotronic®**  
For ri-accu® L



ri-accu® L



**Nr. 3767**

L3 LED 3,5 V/230 V

**Nr. 3755-203** L3 Oto./L2 Oph. LED 3,5 V

**Nr. 3768**

L3 LED 3,5 V/120 V

230 V

**Nr. 3756-203** L3 Oto./L2 Oph. LED 3,5 V

120 V

**Nr. 10692**

for 3,5 V

**Nr. 10692**

for 3,5 V




**ri-scope® de luxe®**  
 ri-scope® F.O. otoscope, ophthalmoscope, F.O. nasal speculum, F.O. tongue blade holder and F.O. bent-arm illuminator


- Tubes with 4 black, re-usable ear specula sizes 2 - 5 mm and each with 3 blue 2.5-mm (L1/L2) or 2-mm (L3) and 4-mm disposable ear specula.
- Two laryngeal mirrors No. 3 and No. 4.
- Deluxe hard case with safety catch.
- Two spare lamps.


**ri-scope® slit retinoscope**


- Two fixation cards for dynamic retinoscopy.
- Deluxe hard case with safety catch.
- One spare lamp.

**Battery handle, Type C with rheotronic®**  
 For 2 alkaline batteries, Type C or ri-accu®



**Alkaline battery, Type C** 

**ri-accu® NiMH** 

**ri-charger®** 


**Nr. 3771** L3 Oto./L2 Oph. HL 2,5 V


**Nr. 10686** for 2,5 V  
**Nr. 10681** for 2,5 V  
**Nr. 10700** 230 V  
**Nr. 10701** 120 V

**Nr. 3410** HL 2,5 V

**Nr. 10686** for 2,5 V  
**Nr. 10681** for 2,5 V  
**Nr. 10700** 230 V  
**Nr. 10701** 120 V

**Battery handle, Type C with rheotronic®**  
 For 2 Li batteries



**Li-Batterie** 


**Nr. 3772-203** L3 Oto./L2 Oph. LED 3,5 V


**Nr. 11287** for 3,5 V


**Nr. 3782** XL 3,5 V

**Nr. 11287** for 3,5 V

**Battery handle, Type C with rheotronic®**  
 For ri-accu® L



**ri-accu® L** 

**ri-charger® L** 

*Li-Ion inside*


**Nr. 3820-203** L3 Oto./L2 Oph. LED 3,5 V


**Nr. 10691** for 3,5 V  
**Nr. 10705** 230 V  
**Nr. 10706** 120 V

**Nr. 3782-550** XL 3,5 V

**Nr. 10691** for 3,5 V  
**Nr. 10705** 230 V  
**Nr. 10706** 120 V

**Plug-in handle with rheotronic®**  
 For ri-accu® L



**ri-accu® L** 

*Li-Ion inside*

**Nr. 3773-203** L3 Oto./L2 Oph. LED 3,5 V  
 230 V  
**Nr. 3774-203** L3 Oto./L2 Oph. LED 3,5 V  
 120 V

**Nr. 10692** for 3,5 V

**Nr. 3783** XL 3,5 V/230 V  
**Nr. 3784** XL 3,5 V/120 V

**Nr. 10692** for 3,5 V




**ri-scope® spot retinoscope**


- Two fixation cards for dynamic retinoscopy.
- Deluxe hard case with safety catch.
- One spare lamp.


**ri-vision® with slit retinoscope**


- ri-scope® retinoscope with slit lamp and ophthalmoscope L2
- Two fixation cards for dynamic retinoscopy.
  - Two spare lamps.

**Battery handle, Type C with rheotronic®**  
For 2 alkaline batteries, Type C or ri-accu®



**Alkaline battery, Type C** 


**ri-accu® NiMH** 


**ri-charger®** 

<b>Nr. 3430</b>	HL 2,5 V
<b>Nr. 10686</b>	for 2,5 V
<b>Nr. 10681</b>	for 2,5 V
<b>Nr. 10700</b>	230 V
<b>Nr. 10701</b>	120 V

<b>Nr. 3792</b>	HL 2,5 V
<b>Nr. 10686</b>	for 2,5 V
<b>Nr. 10681</b>	for 2,5 V
<b>Nr. 10700</b>	230 V
<b>Nr. 10701</b>	120 V

**Battery handle, Type C with rheotronic®**  
For 2 Li batteries





**Li-Batterie** 


<b>Nr. 3787</b>	XL 3,5 V
<b>Nr. 11287</b>	for 3,5 V

<b>Nr. 3794</b>	XL 3,5 V
<b>Nr. 3794-203</b>	XL/LED 3,5 V
<b>Nr. 11287</b>	for 3,5 V

**Battery handle, Type C with rheotronic®**  
For ri-accu® L



**ri-accu® L** 


**ri-charger® L** 


*Li-Ion Inside*

<b>Nr. 3787-550</b>	XL 3,5 V
<b>Nr. 10691</b>	for 3,5 V
<b>Nr. 10705</b>	230 V
<b>Nr. 10706</b>	120 V

<b>Nr. 3794-550</b>	XL 3,5 V
<b>Nr. 3821-203</b>	XL/LED 3,5 V
<b>Nr. 10691</b>	for 3,5 V
<b>Nr. 10705</b>	230 V
<b>Nr. 10706</b>	120 V

**Plug-in handle with rheotronic®**  
For ri-accu® L



**ri-accu® L** 

*Li-Ion Inside*

<b>Nr. 3788</b>	XL 3,5 V/230 V
<b>Nr. 3789</b>	XL 3,5 V/120 V
<b>Nr. 10692</b>	for 3,5 V

<b>Nr. 3795</b>	XL 3,5 V/230 V
<b>Nr. 3796</b>	XL 3,5 V/120 V
<b>Nr. 3795-203</b>	XL/LED 3,5 V/230 V
<b>Nr. 3796-203</b>	XL/LED 3,5 V/120 V
<b>Nr. 10692</b>	for 3,5 V





**ri-vision® with spot retinoscope**  
 ri-scope® retinoscope with spot-light and ophthalmoscope L2

- Two fixation cards for dynamic retinoscopy
- Two spare lamps.

**ri-derma®**

- Two sterilizable contact plates, with and without scaling.
- Deluxe hard case with safety catch.
- One spare lamp.

**Battery handle, Type C with rheotronic®**  
 For 2 alkaline batteries, Type C or ri-accu®



**Alkaline battery, Type C**



**ri-accu® NiMH  
 ri-charger®**



**Nr. 3799**

HL 2,5 V

**Nr. 3390**

HL 2,5 V

**Nr. 10686**

for 2,5 V

**Nr. 10686**

for 2,5 V

**Nr. 10681**

for 2,5 V

**Nr. 10681**

for 2,5 V

**Nr. 10700**

230 V

**Nr. 10700**

230 V

**Nr. 10701**

120 V

**Nr. 10701**

120 V

**Battery handle, Type C with rheotronic®**  
 For 2 Li batteries



**Li-Batterie**



**Nr. 3801**

XL 3,5 V

**Nr. 3777**

LED 3,5 V

**Nr. 3801-203**

XL/LED 3,5 V

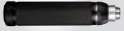
**Nr. 11287**

for 3,5 V

**Nr. 11287**

for 3,5 V

**Battery handle, Type C with rheotronic®**  
 For ri-accu® L



**ri-accu® L**



**ri-charger® L**

**Nr. 3801-550**

XL 3,5 V

**Nr. 3777-550**

LED 3,5 V

**Nr. 3822-203**

XL/LED 3,5 V

**Nr. 10691**

for 3,5 V

**Nr. 10691**

for 3,5 V

**Nr. 10705**

230 V

**Nr. 10705**

230 V

**Nr. 10706**

120 V

**Nr. 10706**

120 V

**Plug-in handle with rheotronic®**

For ri-accu® L



**Nr. 3802**

XL 3,5 V/230 V

**Nr. 3778**

LED 3,5 V/230 V

**Nr. 3803**

XL 3,5 V/120 V

**Nr. 3779**

LED 3,5 V/120 V

**Nr. 3802-203**

XL/LED 3,5 V/230 V

**Nr. 3803-203**

XL/LED 3,5 V/120 V

**ri-accu® L**



**Nr. 10692**

for 3,5 V

**Nr. 10692**

for 3,5 V

