



The AstraBT[™] Wireless Spirometer

Complete with
AstraPRO Software[™]

AstraBT | AstraPro Software

- Windows 10 compatible
- Meets ATS standards
- NIOSH compliant
- Simultaneous F/V and V/T graphs
- Over 45 parameters
- Quality control programming
- Patient database selection
- Auto diagnostic selection
- Multiple incentive screens
- Power: Two-AAA Batteries
- Ergonomic handle
- Visual power/connectivity indicator
- Temperature sensor integrated handle
- Power-save mode

*Evaluate your patients
and observe results in
real-time*



The AstraBT Wireless Spirometer

TECHNICAL SPECIFICATIONS AND PARAMETERS

Forced Parameters Measured

Forced Vital Capacity: FVC, FEV1, FEV1/FVC, PEF, Lung Age
 FEF50%, FEV6, FEV1/FEC, FEF50%
 FEF25-75%, FEV6, FEV1/FEV0.5,
 PEFT, Vext, FIVC, FIF50%, FEF50/FIF50
 QC Grades, FEV.5, FEV3, FEV.5/FVC
 FEV3/FVC, FEV1/VC, FEV1/FEV6
 FEV1/PEF, FEV1/FFIV1, PEF/PIF, FEV25%
 FEF25%, FEF75%, FEF75-85%, FET25-75%
 FET100, FIV1, FIV1/FIVC, PIF, MTT, MVVInd

MVV: MVV, Br./min

Bronchoconstriction: FVC, FEV1, PEF, FEF25-75%, PDX

Relaxed Parameters Measured

VC: VC, TV, ERV, IRV, IC, Ti, Te, Tt, Ti/Tt

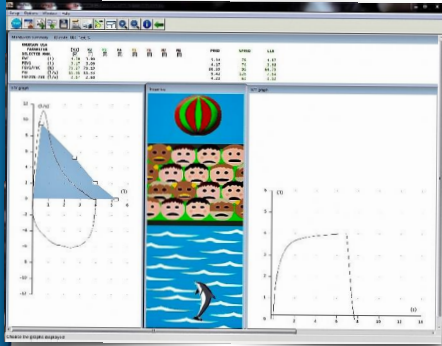
Maneuvers per patient: 8 Total; best test and last test highlighted

Interpretation: Selectable--Kory, Miller, ATS, NLHEP

Predicted Sets: Selectable--20 Total

Ethnic Correction: Selectable--% Actual, Caucasian, Hispanic
 African-American

Language: Language: Selectable--English and Spanish



Measurement Scale (BTPS)

Flow Range: 0-16L/Sec

Volume: 0-10L

Measurement Method: Infrared Interruption via Digital Turbine

Dynamic Flow Resistance: <1.5cmH2O/L/Sec

Measurement Precision (BTPS)

At Highest Volume: +/- 3% or 50ml

At Highest Flow: +/- 5% or 150ml

Time Related Precision: .5%

Volume Resolution: <6ml

Sampling Frequency: 100 Hz

OPTIONAL

Calibration Syringe

Your Dealer is:

Manufactured by:

sdi

DIAGNOSTICS

The Spirometry Source

www.sdidiagnostics.com