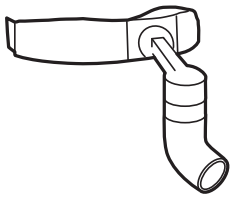


Green Series Procedure Headlight System
REF 49020, 49022, 49024, 49026
Directions for use



Symbol descriptions



Consult Directions for use



Warning



Caution



Class II Equipment



INTENSE LIGHT



Lamp On



Lamp Off



Recycle the product separate from other disposables, see "Product Disposal"

IPX0 Not protected against the ingress of water.

WARNING:

- Green Series Procedure Headlight is not suitable for use in the presence of a flammable anesthetic mixture with air or oxygen or nitrous oxide. An explosion may result.
- INTENSE LIGHT: Lamp is bright. Do not stare at the lamp when in use. May be harmful to eyes.

CAUTION:

- Read Operating Manual for Warnings, Cautions, and Instructions for Use.
- No modification of this equipment is allowed.
- Do not block access to the wall socket. Ensure that transformer can be unplugged from the AC power source.
- Use only Green Series Procedure Headlight Power Source/Battery Charger and rechargeable battery pack supplied by Welch Allyn.
- There are no user-serviceable parts inside the device except the rechargeable batteries and headband. Contact the Authorized Service Center listed at www.welchallyn.com/support for further assistance.

Guidelines for safe use of the Green Series Portable Headlight

Intended use

This headlight is designed to meet the various needs of the physician's office, hospital environment, and specialist's office.

Setup and operation

The Green Series Procedure Headlight (REF 49020) consists of the Procedure Headlight (REF 49000) with Direct Power Source (REF 75270), and Accessory Portable Power Source/Charger (REF 75260).

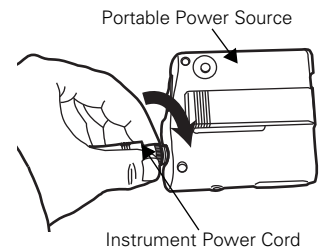
The Green Series Procedure Headlight is designed to operate off the direct or the portable power source. To operate the headlight using the direct power source, follow the instructions and illustrations in the section labeled Direct Plug-In Transformer. Press the on/off switch located on the Direct Plug to operate the headlight. To operate the headlight using the portable power source, follow the instructions and illustrations under the section labeled "Connecting Headlight to Portable Power source".

To recharge the portable power source, follow the instructions and illustrations in the "Recharging the Portable Power source" section. To adjust the light spot size, turn the knob on the front section of the luminaire. To adjust the headband, simply rotate the adjustment knob located on the back of the headband.

Follow the assembly instructions listed below and the corresponding illustrations.

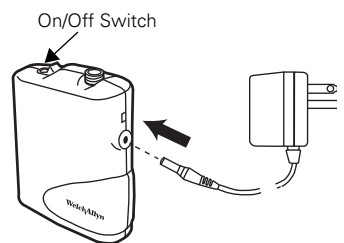
Connecting Headlight to Portable Power Source

1. Plug the instrument power cord into the power cord connector port on the top of the power source.
2. Push in until it is firmly in place.
3. Gently screw the external connector sleeve clockwise to secure. Recharging the Portable Power Source



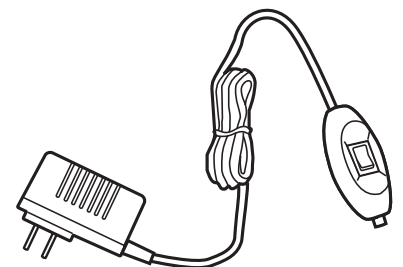
Recharging the Portable Power Source

1. Turn the portable power source off.
2. Disconnect instrument from power source.
3. Plug charging transformer into portable power source.
4. Plug charging transformer into wall socket. LED light indicates unit is charging.
5. Disconnect charging transformer from power source when fully charged, approximately 10 - 12 hours.



Direct Plug-In Transformer

1. Plug Power cord from the Green Series Procedure Headlight into the Direct Plug-In Power cord.
2. Push until firmly in place.
3. Gently screw the external connector sleeve clockwise to secure.
4. The instrument is now ready for use.
5. Plug direct power source into a nearby receptacle.

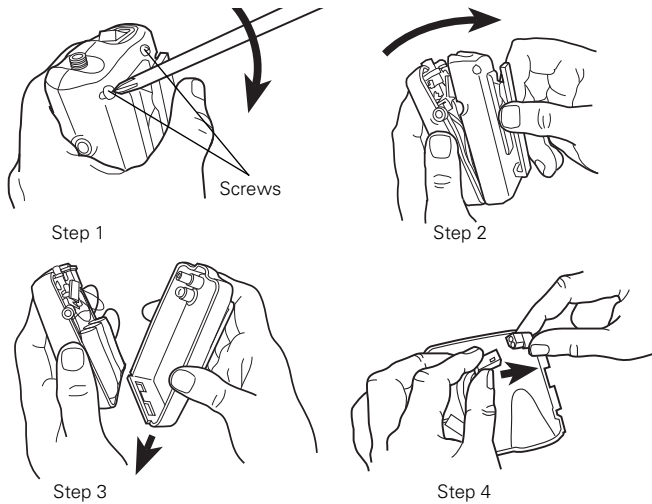


Cleaning

CAUTION:

- Do not immerse in cleaning solutions.
 - Excess solution entering the luminaire assembly could damage internal components. Use caution to ensure cloth is not saturated with solution.
 - Do not sterilize the unit.
1. Unplug the unit prior to cleaning.
 2. Wipe down the entire luminaire with a cloth slightly dampened with a mild solution of detergent.
 3. Do not operate the light until the light is thoroughly dry.

Battery Replacement



1. Verify power is off.
2. Remove both screws from back of power source with Phillips head screwdriver (figure 1).
3. Grasp the belt clip, gently pull back and down on the housing (figure 2 and 3).
4. Lift battery out and unplug from unit.
5. Replace with new battery and reverse above steps.

CAUTION: Securely tighten the power source housing screws in order to properly hold electrical components in place.

Troubleshooting

Trouble Area	Possible Cause	Corrective Action
No Light Output	Dead battery or battery not connected properly	Verify that the unit operates on direct power source. If yes, insure that the battery is connected properly; refer to the battery replacement section for instructions on connecting the battery. If the battery is connected properly, recharge or replace battery
Low Light Output	Low charge on battery	Verify that the unit operates on direct power source. If yes, recharge or replace battery

Specifications

Color Temperature: 5700K

Light Intensity: 120 Lumens

Working Distance: 16 Inches

Electrical

Ref Model	Input Voltage	Output Voltage	Output Current
49020	120VAC 50-60Hz	5 volts vdc	1300 mA
49022	230VAC 50-60Hz	5 volts vdc	1300 mA
49024	230VAC 50-60Hz	5 volts vdc	1300 mA
49026	240VAC 50-60Hz	5 volts vdc	1300 mA
75200	5.3V 0.24A	3.5 volts vdc	1.8 AH

Environment

Operating:

32° F - 104° F (0° C - +40° C)

75% RH Max continuous

500hPa - 1060 Altitude

Storage/Transport:

-4° F - 120° F (-20° C - +49° C)

95% RH Max continuous

500hPa - 1060 Altitude

Equipment Classification: Class II, Continuous Operation

IPX0: Not protected against the ingress of water

Category: Not AP/APG Equipment

Accessory Parts List

Model 49000 Procedure Headlight	Model 75262 Battery Pack with Charger (European)
Model 49099 Carrying Case	Model 75264 Battery Pack with Charger (U. K.)
Model 75200 Battery Pack	Model 75262 Battery Pack with Charger (Australia)
Model 75260 Battery Pack with Charger (Domestic)	Model 72250 Replacement Battery

Emissions and Immunity Information

EMC compliance

Special precautions concerning electromagnetic compatibility (EMC) must be taken for all medical electrical equipment. This device complies with IEC EN 60601-1-1.

- All medical electrical equipment must be installed and put into service in accordance with the EMC information provided in this document and *Green Series Procedure Headlight System Directions for Use*.
- Portable and mobile RF communications equipment can affect the behavior of medical electrical equipment.

The Green Series Procedure Headlight System complies with all applicable and required standards for electromagnetic interference.

- It does not normally affect nearby equipment and devices.
- It is not normally affected by nearby equipment and devices.
- It is not safe to operate the *Green Series Procedure Headlight System* in the presence of high-frequency surgical equipment.

For information about electromagnetic compatibility (EMC), see the Welch Allyn website: http://www.welchallyn.com/apps/products/product_category.jsp?catcode=LTG

Approvals



The CE mark on this product indicates that it has been tested to and conforms with the provisions noted within the 93/42/EEC Medical Device Directive.



Regulatory Affairs Representative
Welch Allyn Limited
Navan Business Park
Dublin Road
Navan, County Meath, Republic of Ireland



Complies with EMC Framework of Australia



Product Disposal - Do not dispose of this product as unsorted municipal waste. Prepare this product for reuse or separate collection as specified by Directive 2002/96/EC of the European Parliament and the Council of the European Union on Waste Electronic and Electrical Equipment (WEEE). If this product is contaminated, this directive does not apply.

Warranty - One year.

Service Information

For Technical Support or to obtain information about any Welch Allyn product, contact Welch Allyn Technical Support:

(www.welchallyn.com/support) or visit www.welchallyn.com/about/company/locations.htm

WelchAllyn®

4341 State Street Road
Skaneateles Falls, NY 13153 - USA
Tel: (800) 535-6663 or (315) 685-4560

www.welchallyn.com